

\$755,000

mikegreerhomes

Rangiora

Lot 355 Bellgrove



Artist Impression Only

for sale

dwelling size | section size
140 m² | 390 m²

homes
for
sale

Offering two double bedrooms and an open plan living, kitchen and dining area, this home is perfectly designed to maximise space and indoor/outdoor flow. The home features an internal access double garage and a landscaped private section perfect for entertaining. Complementing the living and bedroom spaces are the family bathroom and separate WC that are both well-appointed with quality fixtures and fittings.

Bellgrove has been meticulously designed to offer living spaces and choices for all, promising a serene neighborhood that you'll love. Conveniently located just 30 minutes away from Christchurch city centre, Bellgrove offers an idyllic lifestyle within easy reach of all the amenities and attractions the city has to offer. The subdivision thoughtfully encompasses outdoor living spaces and neighboring recreational facilities, creating a well-rounded living experience.

more features.

- ✦ Close to Local Amenities
- ✦ Boundary Fences
- ✦ 10 Year Registered Master Build Guarantee
- ✦ Samsung Appliances
- ✦ Stone Benchtop
- ✦ Tiled Floors to Wet Areas
- ✦ Tiled Splashback
- ✦ Walk-in Pantry



Turn Key

A Turn Key home is an all-inclusive package that only requires 10% deposit.

bringing you more

03 313 0319


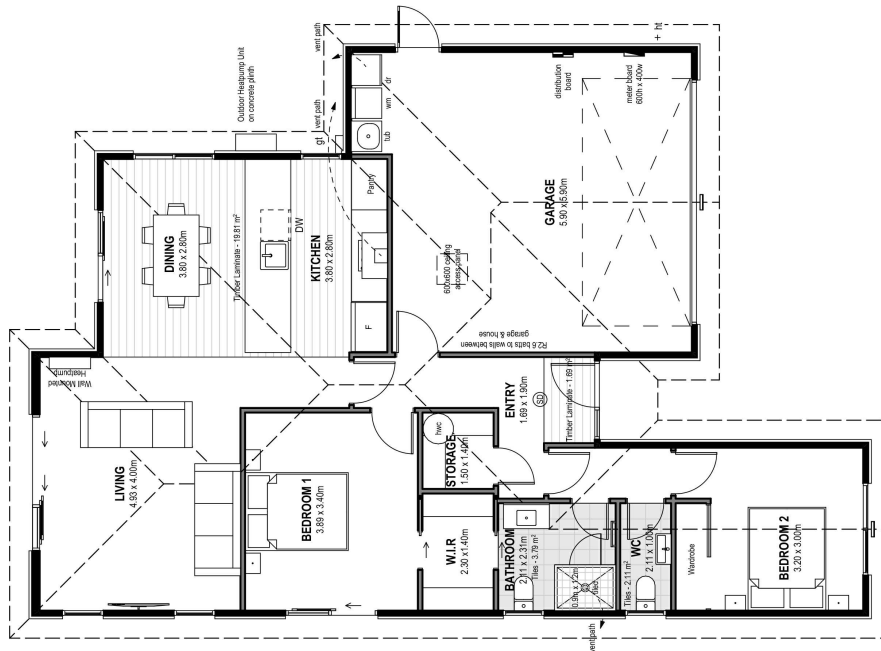
mikegreerhomes.co.nz

Bellgrove Lot 355 Bellgrove

dwelling size | section size

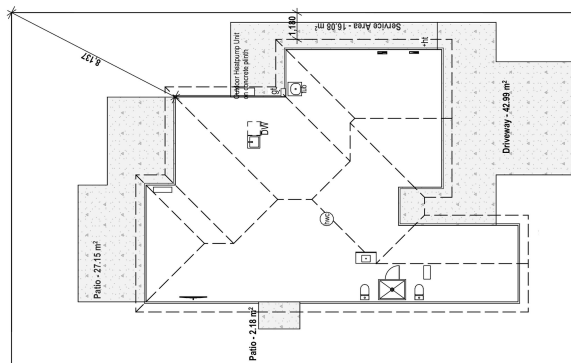
140 m² | 390 m²

2 2 1 1 2

After Sales Care

At Mike Greer Homes we are committed to making the build journey as stress-free as possible. Our After Sales Care programme addresses any maintenance issues and ensures that any remedial work is undertaken once it is logged and approved.



Disclaimer. While every reasonable effort has been made by Mike Greer Homes to ensure the information correctly illustrates the dwelling and section, this material may only be used by the Purchaser for illustrative and guidance purposes. Mike Greer Homes accepts no responsibility for any differences, errors or omissions which may become apparent during or on completion of the dwelling.