

\$665,000

mikegreerhomes

Belfast

Lot 6a Spring Grove - 2 Sedge Street



for sale

dwelling size	section size
107 m ²	247 m ²

homes
for
sale

This home combines a practical floor plan to maximise functionality and lifestyle. The two bedrooms are complemented by two bathrooms, a separate WC, separate laundry and an open plan kitchen, dining and living area. This North-facing living area opens out to the patio and fully landscaped section. An internal access single garage completes the package.

Spring Grove is a fast-growing subdivision just ten minutes North of Central Christchurch. You have the convenience of being in close proximity to a number of local shops and amenities, and the luxury of semi-rural amenities such as golf courses and recreational reserves. Spring Grove offers you the ideal location with a range of homes at an affordable price.

more features.

- ✚ Ensuite
- ✚ Fully Landscaped
- ✚ Godfrey Hirst Flooring
- ✚ Open Plan Living
- ✚ Stone Benchtop
- ✚ Tiled Floors to Wet Areas



Turn Key





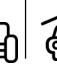
A Turn Key home is an all-inclusive package that only requires 10% deposit.

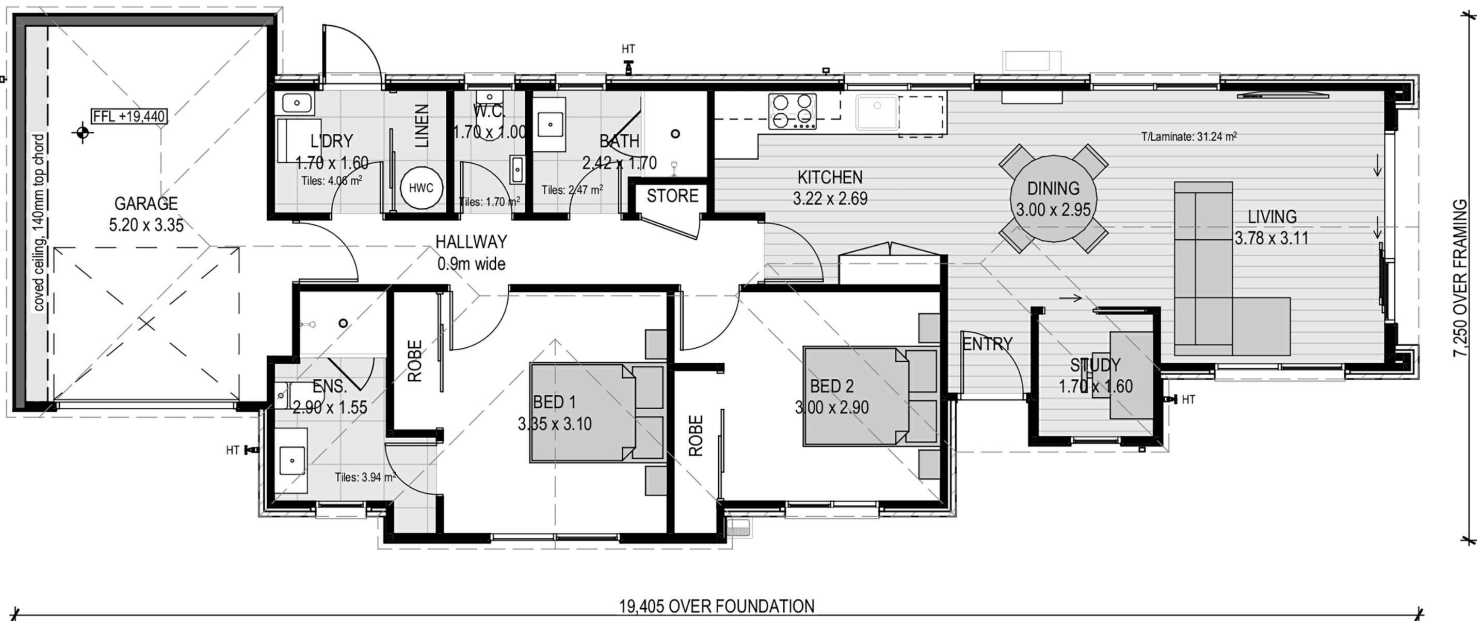
bringing you **more**

03 354 0166

mikegreerhomes.co.nz

Spring Grove Lot 6a Spring Grove - 2 Sedge Street

dwelling size	section size	2	2	2	1	1
107 m ²	247 m ²					


CT7861


After Sales Care

At Mike Greer Homes we are committed to making the build journey as stress-free as possible. Our After Sales Care programme addresses any maintenance issues and ensures that any remedial work is undertaken once it is logged and approved.

Disclaimer. While every reasonable effort has been made by Mike Greer Homes to ensure the information correctly illustrates the dwelling and section, this material may only be used by the Purchaser for illustrative and guidance purposes. Mike Greer Homes accepts no responsibility for any differences, errors or omissions which may become apparent during or on completion of the dwelling.

