

\$735,000

mikegreerhomes

Greymouth

Lot 5 Paparoa Views, Kaiata Park



for sale

dwelling size	section size
191 m ²	856 m ²

homes
for
sale

This four double bedroom home has been designed to maximise space and sun. The North-facing open plan living, dining and kitchen area forms the centre of the home and offers great indoor/outdoor flow. The well-appointed family bathroom and ensuite both feature quality fixtures and fittings that complement the spacious bedroom and living areas.

Paparoa Views is a new subdivision in Kaiata Park, featuring generous residential sections nestled in native bush and located just ten minutes East of Greymouth. You have the convenience of being in close proximity to shops and amenities, and the luxury of semi-rural amenities such as the golf course, world renown walks, spectacular mountain bike tracks and world class trout fishing only a half hour away in Lake Brunner. Paparoa Views combines the serenity of country living with outdoor living and adventure at your doorstep.

more features.

- +
- +
- +
- +
- +
- +

Home and Land Package

A Home and Land Package is a section and home combination with finance options available.

Special T&C's apply to this package.

bringing you more

03 768 9253


mikegreerhomes.co.nz

Paparoa Views Lot 5 Paparoa Views, Kaiata Park

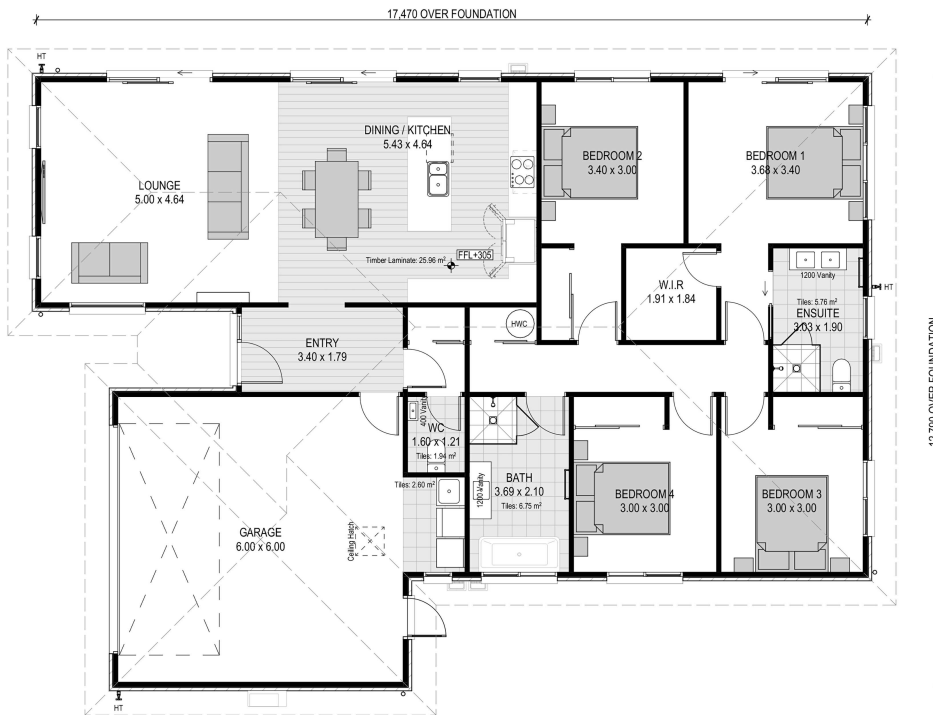
dwelling size | section size

191 m² | 856 m²

4 2 2 1 2




WC7111



After Sales Care

At Mike Greer Homes we are committed to making the build journey as stress-free as possible. Our After Sales Care programme addresses any maintenance issues and ensures that any remedial work is undertaken once it is logged and approved.

Disclaimer. While every reasonable effort has been made by Mike Greer Homes to ensure the information correctly illustrates the dwelling and section, this material may only be used by the Purchaser for illustrative and guidance purposes. Mike Greer Homes accepts no responsibility for any differences, errors or omissions which may become apparent during or on completion of the dwelling.

