

\$879,000

 **mikegreerhomes**

Highsted

Townhouse 27, 1 Malaga Crescent, Christchurch



for sale

dwelling size
147 m²

**homes
for
sale**

This two storey home has an internal access single garage, open plan kitchen, dining and living area, separate laundry and toilet, three generous bedrooms, an ensuite and bathroom, complete with your own private outdoor area.

Malaga Crescent is located in the high value leafy suburb of Highsted. Bordering Tulett Park, these homes have unrestricted access to nature and recreation. Highsted is the ideal place to live for those who love the outdoors, with a multitude of parks, cycleways, reserves, and walkways conveniently on your doorstep. Executive living close to schooling, supermarkets and still only 15 minutes to the Christchurch CBD.

more features.

- ✚ Fully Landscaped
- ✚ Complies with the Healthy Homes Standard
- ✚ 10 Year Registered Master Build Guarantee
- ✚ Smeg Appliances
- ✚ Single Car Garaging
- ✚ Undertile Heating in Bathroom and Ensuite
- ✚ Window Coverings Included



Turn Key

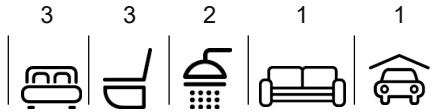
A Turn Key home is an all-inclusive package that only requires 10% deposit.

bringing you **more**

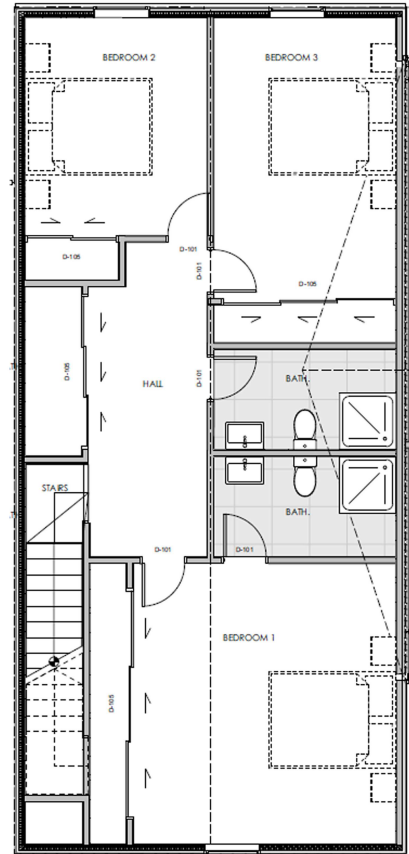
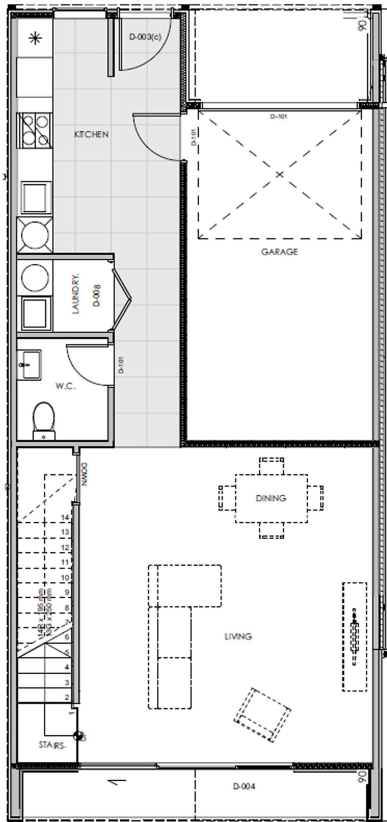
mikegreerhomes.co.nz

Malaga Crescent Townhouse 27, 1 Malaga Crescent, Christchurch

dwelling size
147 m²



VC1299c



After Sales Care

At Mike Greer Homes we are committed to making the build journey as stress-free as possible. Our After Sales Care programme addresses any maintenance issues and ensures that any remedial work is undertaken once it is logged and approved.

Disclaimer. While every reasonable effort has been made by Mike Greer Homes to ensure the information correctly illustrates the dwelling and section, this material may only be used by the Purchaser for illustrative and guidance purposes. Mike Greer Homes accepts no responsibility for any differences, errors or omissions which may become apparent during or on completion of the dwelling.

