

\$699,000

mikegreerhomes

Halswell

House 6 Benrogan - 28 Perks Drive



for sale

dwelling size | section size
117 m² | 236 m²

homes
for
sale

This stylish home combines a practical floor plan with attention to detail to maximise functionality and lifestyle. The three double bedrooms are complemented by a family bathroom and ensuite, as well as a spacious open plan kitchen, dining and living area. This well-appointed North facing living area opens out onto the fully landscaped section and outdoor entertaining area. An internal access single garage completes the package.

The Benrogan subdivision is nestled in the highly sought-after Halswell area. It provides access to neighboring reserves and boasts a breathtaking backdrop of the Port Hills, all while being conveniently located less than 10km from the heart of Christchurch. This location allows you to enjoy the serenity of nature while still being close to the wealth of amenities that Halswell has to offer.

more features.

- ✦ Ensuite
- ✦ Fully Landscaped
- ✦ Godfrey Hirst Flooring
- ✦ Stone Benchtop
- ✦ Separate Laundry
- ✦ Tiled Floors to Wet Areas

Turn Key

A Turn Key home is an all-inclusive package that only requires 10% deposit.

bringing you **more**

03 354 0166

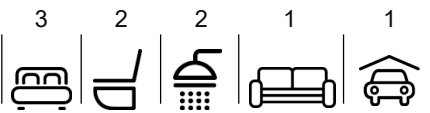
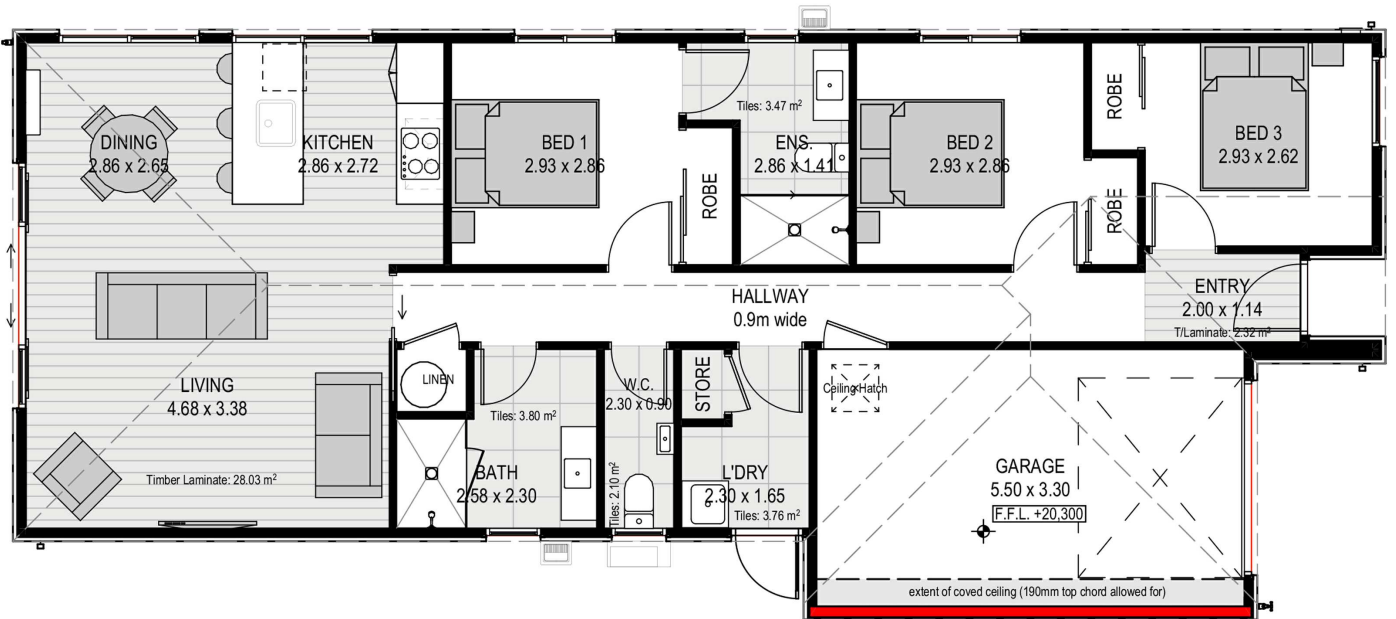
mikegreerhomes.co.nz

Benrogan House 6 Benrogan - 28 Perks Drive

dwelling size | section size

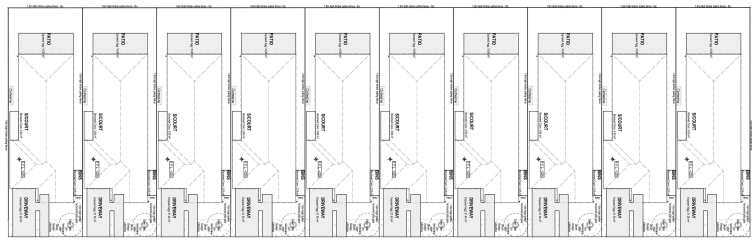
117 m² | 236 m²

3 2 2 1 1

After Sales Care

At Mike Greer Homes we are committed to making the build journey as stress-free as possible. Our After Sales Care programme addresses any maintenance issues and ensures that any remedial work is undertaken once it is logged and approved.



Disclaimer. While every reasonable effort has been made by Mike Greer Homes to ensure the information correctly illustrates the dwelling and section, this material may only be used by the Purchaser for illustrative and guidance purposes. Mike Greer Homes accepts no responsibility for any differences, errors or omissions which may become apparent during or on completion of the dwelling.