

# \$985,000

# mikegreerhomes

## St Albans

Lot 2, 506 Madras Street



# for sale

dwelling size | section size  
170 m<sup>2</sup> | 209 m<sup>2</sup>

homes  
for  
sale

This two storey, standalone home is perfect for couples, families and investors. Perfectly designed for the site, the ground floor features an open plan living and kitchen area that connects well to the outdoor space. A separate toilet is tucked away off the hall. Upstairs are three double bedrooms, an ensuite and main bathroom both with tiled showers. An internal access double garage and quality fittings throughout, this home presents good value for money!

This premium development sits on the corner of Canon and Madras Street right on the outskirts of the City Centre. Enjoy living in the suburbs with the convenience of Central Christchurch right on your doorstep. With St Albans Park, English Park and Rugby Park nearby, you'll have easy access to a multitude of recreational facilities. Zoned for several schools and close to many amenities, these homes are positioned in a prime location!

### more features.

- +
- +
- +
- +
- +
- +
- +
- +
- +
- +

 Turn Key

A Turn Key home is an all-inclusive package that only requires 10% deposit.

bringing you more

03 354 0166

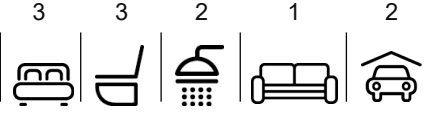
mikegreerhomes.co.nz

# Canon/Madras Development Lot 2, 506 Madras Street

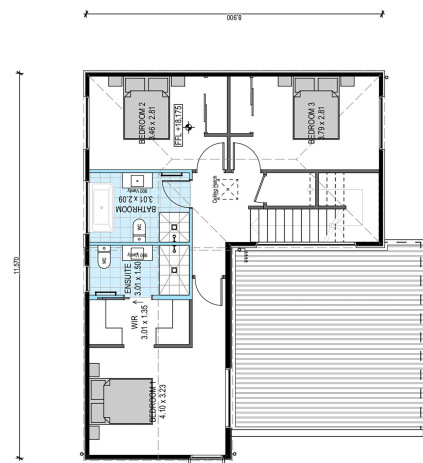
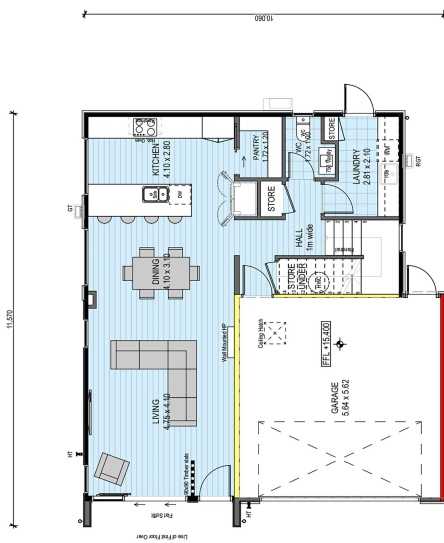
dwelling size | section size

170 m<sup>2</sup> | 209 m<sup>2</sup>

3 | 3 | 2 | 1 | 2




CT6951



## After Sales Care

At Mike Greer Homes we are committed to making the build journey as stress-free as possible. Our After Sales Care programme addresses any maintenance issues and ensures that any remedial work is undertaken once it is logged and approved.

Disclaimer. While every reasonable effort has been made by Mike Greer Homes to ensure the information correctly illustrates the dwelling and section, this material may only be used by the Purchaser for illustrative and guidance purposes. Mike Greer Homes accepts no responsibility for any differences, errors or omissions which may become apparent during or on completion of the dwelling.

MADRAS STREET

