

\$679,000

mikegreerhomes

Kaiapoi

Lot 292 Beach Grove



for sale

dwelling size	section size
143 m ²	288 m ²

homes
for
sale

This stylish home combines a practical floor plan with attention to detail to maximise functionality and lifestyle. The three double bedrooms are complemented by a family bathroom and ensuite, as well as a spacious open plan kitchen, dining and living area. This well-appointed North facing living area opens out onto the landscaped section and outdoor entertaining area. An internal access single garage completes the package.

Beach Grove is only 900 metres from the heart of Kaiapoi, and is also in close proximity to a range of outdoor pursuits such as fishing, cycling, white baiting, swimming, kayaking, rowing, walking and golfing. Sections and homes in Beach Grove represent exceptional value in such a convenient location with Christchurch city only a short commute away.

more features.

- + Close to Local Amenities
- + After Sales Care Program
- + Boundary Fences
- + Ensuite
- + Driveway and Patios Included
- + LED Lighting
- + 10 Year Registered Master Build Guarantee
- + Open Plan Living






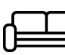

A Turn Key home is an all-inclusive package that only requires 10% deposit.

bringing you **more**

03 313 0319

mikegreerhomes.co.nz

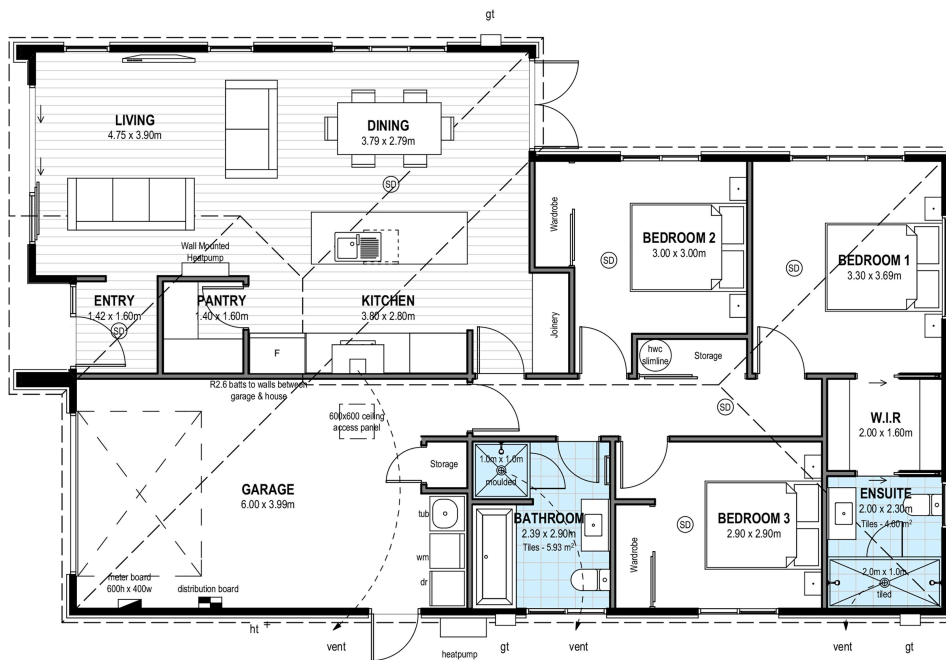
Beach Grove Lot 292 Beach Grove

dwelling size	section size	3	2	2	1	1
143 m ²	288 m ²					

KiwiSaver
Poua he Oranga



N2788



After Sales Care

At Mike Greer Homes we are committed to making the build journey as stress-free as possible. Our After Sales Care programme addresses any maintenance issues and ensures that any remedial work is undertaken once it is logged and approved.

Disclaimer. While every reasonable effort has been made by Mike Greer Homes to ensure the information correctly illustrates the dwelling and section, this material may only be used by the Purchaser for illustrative and guidance purposes. Mike Greer Homes accepts no responsibility for any differences, errors or omissions which may become apparent during or on completion of the dwelling.

