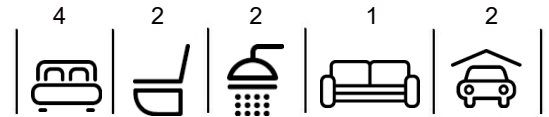


\$849,000

mikegreerhomes

Belfast

Lot 111 Spring Grove - 46 Bill Hammond Drive



for sale

dwelling size | section size
171 m² | 407 m²

homes
for
sale

This stylish four double bedroom home has a spacious open plan design and a North facing easy care section that is fully landscaped and ideal for relaxing and entertaining. All of the bedrooms are well appointed, with a separate family bathroom and ensuite. The home has been finished to a high standard with quality fixtures and fittings throughout. It offers an internal access double garage and has all driveways and fencing included in the sale price.

Spring Grove is a new and upcoming subdivision just ten minutes North of Central Christchurch. You have the convenience of being in close proximity to a number of local shops and amenities, and the luxury of semi-rural amenities such as golf courses and recreational reserves. Spring Grove offers you the ideal location with a range of homes at an affordable price.

more features.

- ⊕ Designer Kitchen
- ⊕ Ensuite
- ⊕ Fully Landscaped
- ⊕ Samsung Appliances
- ⊕ Stone Benchtop
- ⊕ Tiled Floors to Wet Areas



A Turn Key home is an all-inclusive package that only requires 10% deposit.

bringing you **more**

03 354 0166


mikegreerhomes.co.nz

Spring Grove Lot 111 Spring Grove - 46 Bill Hammond Drive

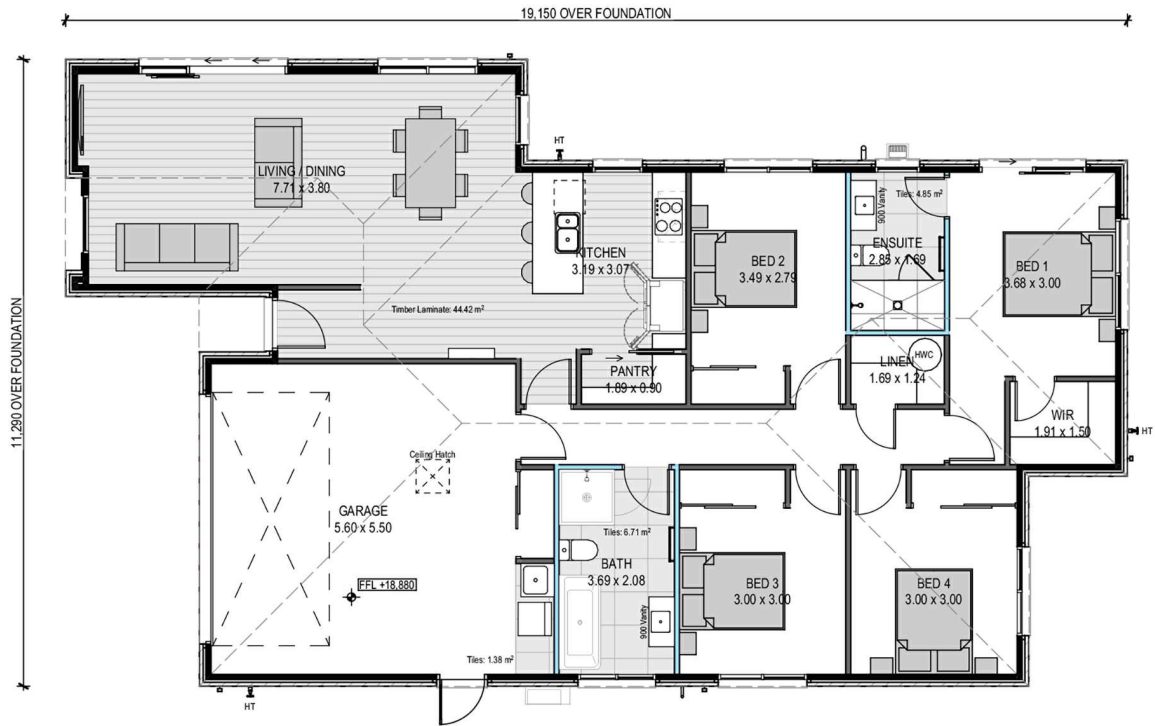
dwelling size | section size

171 m² | 407 m²

4 2 2 1 2




CT7572



After Sales Care

At Mike Greer Homes we are committed to making the build journey as stress-free as possible. Our After Sales Care programme addresses any maintenance issues and ensures that any remedial work is undertaken once it is logged and approved.

Disclaimer. While every reasonable effort has been made by Mike Greer Homes to ensure the information correctly illustrates the dwelling and section, this material may only be used by the Purchaser for illustrative and guidance purposes. Mike Greer Homes accepts no responsibility for any differences, errors or omissions which may become apparent during or on completion of the dwelling.

