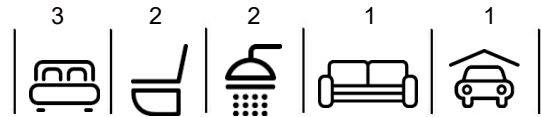


\$775,000

mikegreerhomes

Marshland

Lot 4009b Prestons Park - McKerrow Street



for sale

dwelling size | section size
129 m² | 297 m²

homes
for
sale

Offering three double bedrooms and an open plan living, kitchen and dining area, this home is perfectly designed to maximise space and indoor/outdoor flow. The home features an internal access single garage and a fully landscaped private section. Complementing the living and bedroom spaces are the family bathroom and ensuite that are both well-appointed with quality fixtures and fittings.

Prestons Park is a well-established suburb offering a great lifestyle, regardless of your age or stage. Just 20 minutes to the Airport and City Centre, and a short drive to golf courses, beaches, Bottle Lake Forest, The Palms Mall and Northwood Supa Centre. Prestons Park is in the new state-of-the-art Marshlands School zone, catering for students in Years 1 to 8.

more features.

- +
- +
- +
- +
- +

 Turn Key






A Turn Key home is an all-inclusive package that only requires 10% deposit.

bringing you more

03 354 0166

mikegreerhomes.co.nz

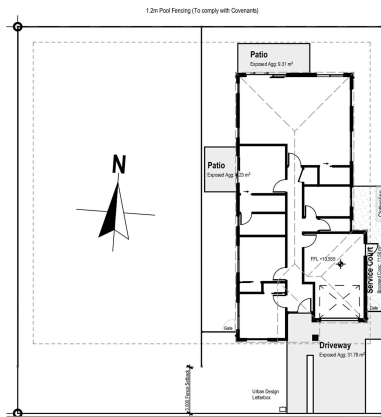
Prestons Park Lot 4009b Prestons Park - McKerrow Street

dwelling size	section size	3	2	2	1	1
129 m ²	297 m ²					



After Sales Care

At Mike Greer Homes we are committed to making the build journey as stress-free as possible. Our After Sales Care programme addresses any maintenance issues and ensures that any remedial work is undertaken once it is logged and approved.



Disclaimer. While every reasonable effort has been made by Mike Greer Homes to ensure the information correctly illustrates the dwelling and section, this material may only be used by the Purchaser for illustrative and guidance purposes. Mike Greer Homes accepts no responsibility for any differences, errors or omissions which may become apparent during or on completion of the dwelling.