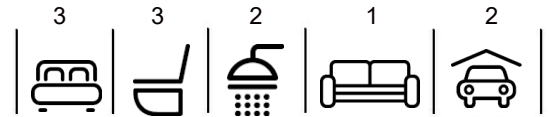


\$985,000

mikegreerhomes

St Albans

Lot 3, 508 Madras Street



for sale

dwelling size | section size
170 m² | 209 m²

homes
for
sale

This spacious home has a thoughtful floor plan that combines three double bedrooms, two bathrooms, a separate laundry, separate WC and a superb open plan living area. The well-appointed kitchen flows nicely with the North-facing dining and living areas to create an overall space that opens out onto the outdoor entertaining area. Finished with quality fixtures and fittings throughout and a fully landscaped section, this home offers great value and an easy lifestyle.

This premium development sits on the corner of Canon and Madras Street right on the outskirts of the City Centre. Enjoy living in the suburbs with the convenience of Central Christchurch right on your doorstep. With St Albans Park, English Park and Rugby Park nearby, you'll have easy access to a multitude of recreational facilities. Zoned for several schools and close to many amenities, these homes are positioned in a prime location!

more features.

- +
- +
- +
- +
- +
- +
- +
- +

 Turn Key






A Turn Key home is an all-inclusive package that only requires 10% deposit.

bringing you **more**

03 354 0166

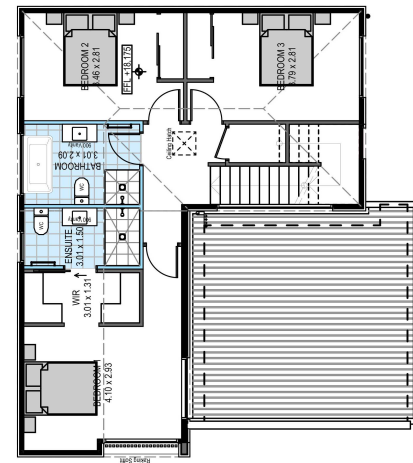
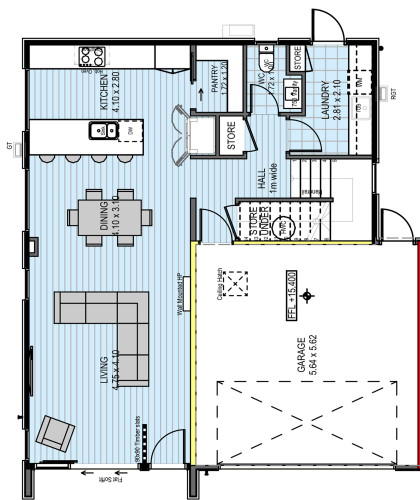
mikegreerhomes.co.nz

Canon/Madras Development Lot 3, 508 Madras Street

dwelling size	section size	3	3	2	1	2
170 m ²	209 m ²					



CT6998



After Sales Care

At Mike Greer Homes we are committed to making the build journey as stress-free as possible. Our After Sales Care programme addresses any maintenance issues and ensures that any remedial work is undertaken once it is logged and approved.

Disclaimer. While every reasonable effort has been made by Mike Greer Homes to ensure the information correctly illustrates the dwelling and section, this material may only be used by the Purchaser for illustrative and guidance purposes. Mike Greer Homes accepts no responsibility for any differences, errors or omissions which may become apparent during or on completion of the dwelling.

MADRAS STREET

