

# \$665,000

# mikegreerhomes

## Rolleston

Lot 9 Wood Grove Stage 1a, Rolleston



# for sale

dwelling size | section size  
116 m<sup>2</sup> | 286 m<sup>2</sup>

homes  
for  
sale

This home has a thoughtful floor plan that combines three double bedrooms, a family bathroom and an ensuite, with an open plan living area. The kitchen flows nicely with the North-facing dining and living areas to create an overall space that opens out onto the outdoor entertaining area. Finished with quality fixtures and fittings throughout and a fully landscaped section, this home offers great value and an easy lifestyle.

Wood Grove offers a lifestyle that is hard to beat. There is something here for everyone, of every age and life stage. You and your family will soon discover why Selwyn and Rolleston are Canterbury's, and New Zealand's, fastest growing communities.

Enjoy easy access to educational institutions, green spaces, a great selection of excellent wineries and eateries, plus all the amenities you could need. Wood Grove gives residents an enviable quality of life in a highly desirable location.

 **Turn Key**

A Turn Key home is an all-inclusive package that only requires 10% deposit.

### more features.

- +
- +
- +
- +
- +
- +

bringing you **more**

03 354 0166


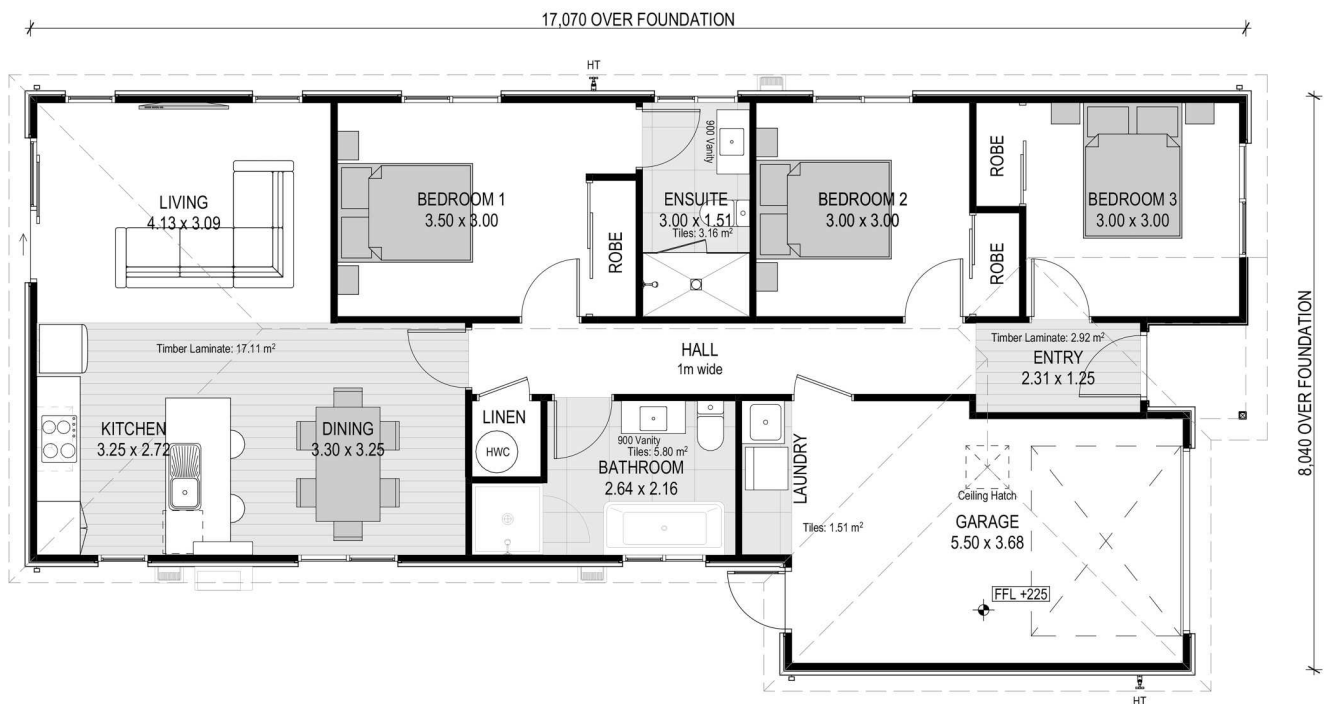
[mikegreerhomes.co.nz](http://mikegreerhomes.co.nz)

# Wood Grove Subdivision Lot 9 Wood Grove Stage 1a, Rolleston

dwelling size | section size

116 m<sup>2</sup> | 286 m<sup>2</sup>

3 2 2 1 1

## After Sales Care

At Mike Greer Homes we are committed to making the build journey as stress-free as possible. Our After Sales Care programme addresses any maintenance issues and ensures that any remedial work is undertaken once it is logged and approved.

Disclaimer. While every reasonable effort has been made by Mike Greer Homes to ensure the information correctly illustrates the dwelling and section, this material may only be used by the Purchaser for illustrative and guidance purposes. Mike Greer Homes accepts no responsibility for any differences, errors or omissions which may become apparent during or on completion of the dwelling.

