

\$639,000

mikegreerhomes

Kaiapoi

Lot 420 Beach Grove



Artist Impression Only

for sale

dwelling size | section size
120 m² | 253 m²

homes
for
sale

This attractive three double bedroom, one bathroom home has a spacious and practical floor plan that would suit a range of people and lifestyles. A North facing open plan living/dining/kitchen area offers easy access to the outdoor entertaining area within the landscaped section. The home also offers an internal access single garage and quality fixtures and fittings throughout, plus it benefits from a good location close to all amenities.

Beach Grove is only 900 metres from the heart of Kaiapoi, and is also in close proximity to a range of outdoor pursuits such as fishing, cycling, white baiting, swimming, kayaking, rowing, walking and golfing. Sections and homes in Beach Grove represent exceptional value in such a convenient location with Christchurch city only a short commute away.

more features.

- ✦ After Sales Care Program
- ✦ 10 Year Registered Master Build Guarantee
- ✦ Samsung Appliances
- ✦ Single Car Garaging
- ✦ Tiled Floors to Wet Areas
- ✦ Tiled Splashback



Turn Key

A Turn Key home is an all-inclusive package that only requires 10% deposit.

bringing you more

03 313 0319

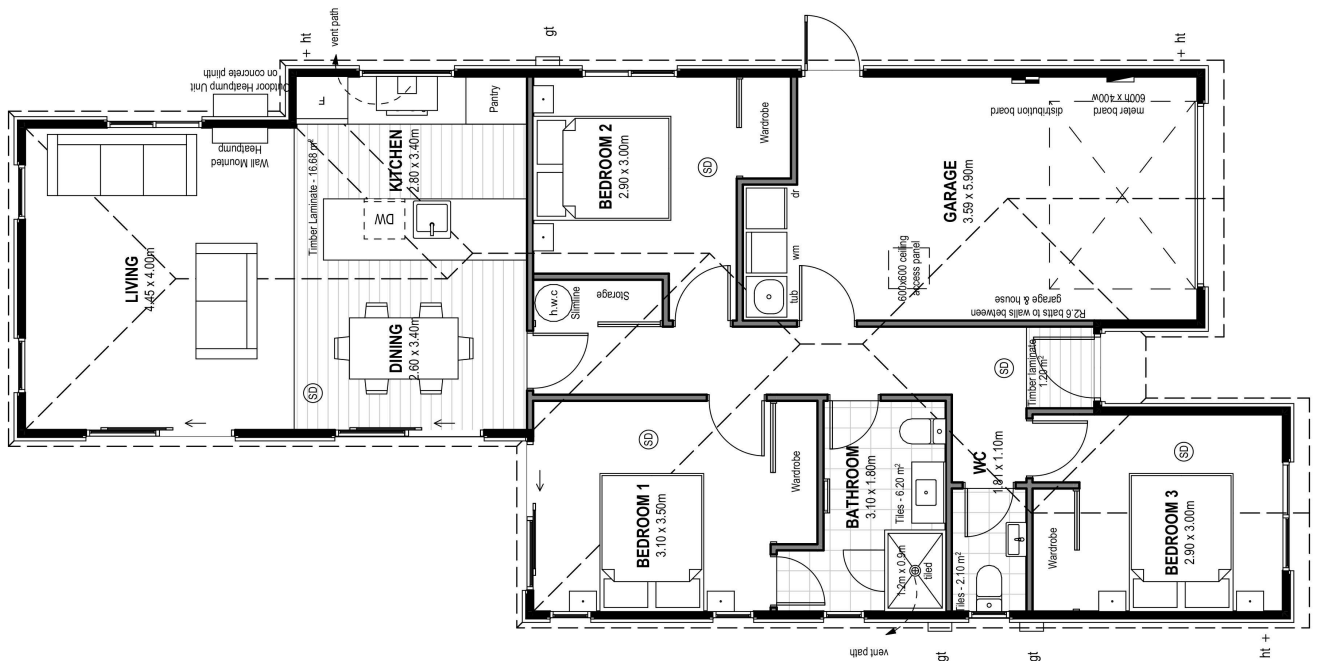
mikegreerhomes.co.nz

Beach Grove Lot 420 Beach Grove

dwelling size | section size

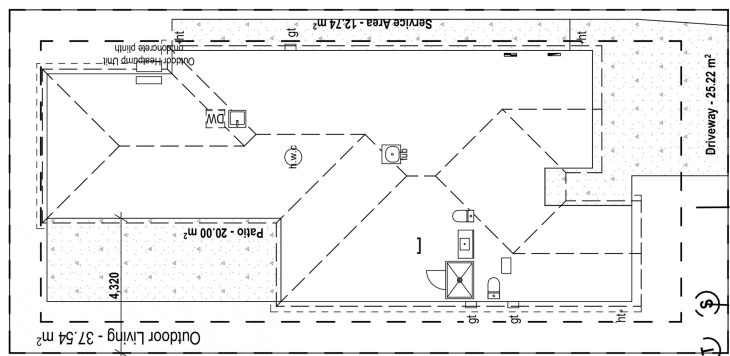
120 m² | 253 m²

3 2 1 1 1



After Sales Care

At Mike Greer Homes we are committed to making the build journey as stress-free as possible. Our After Sales Care programme addresses any maintenance issues and ensures that any remedial work is undertaken once it is logged and approved.



Disclaimer. While every reasonable effort has been made by Mike Greer Homes to ensure the information correctly illustrates the dwelling and section, this material may only be used by the Purchaser for illustrative and guidance purposes. Mike Greer Homes accepts no responsibility for any differences, errors or omissions which may become apparent during or on completion of the dwelling.