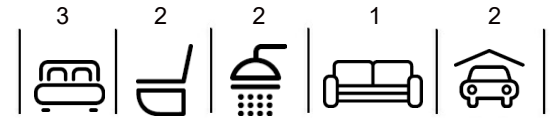


# \$1,090,000

# mikegreerhomes

## Warkworth

5 Mahinga Ave, Warkworth Ridge



# for sale

dwelling size | section size  
144 m<sup>2</sup> | 430 m<sup>2</sup>

homes  
for  
sale

This spacious home has a thoughtful floor plan that combines 3 double bedrooms, a family bathroom and an ensuite, with a superb open plan living area. The well-appointed kitchen flows nicely with the North facing dining and living areas to create an overall space that opens out onto the outdoor entertaining area. Finished with quality fixtures and fittings throughout and a fully landscaped section, this home offers great value and an easy lifestyle.

Warkworth Ridge sits at the northern edge of Warkworth and on the eastern side of State Highway 1. It is located north of the Warkworth show grounds, with the Matakana Link Road running along the southern boundary. The dominant feature is a continuous, north-east to southwest orientated stream and gully, there are areas of substantial vegetation protected through a covenant on the title. The site is very close to the Warkworth show grounds, providing recreational opportunity for new residents.

### Home and Land Package

A Home and Land Package is a section and home combination with finance options available.

### more features.

- ✦ Two Car Garaging
- ✦ Personal Colour Consultation
- ✦ Driveway and Patios Included
- ✦ 10 Year Registered Master Build Guarantee
- ✦ Samsung Appliances
- ✦ Walk-in Pantry
- ✦ Walk-in Wardrobe

Special T&C's apply to this package.

bringing you **more**






09 280 4694

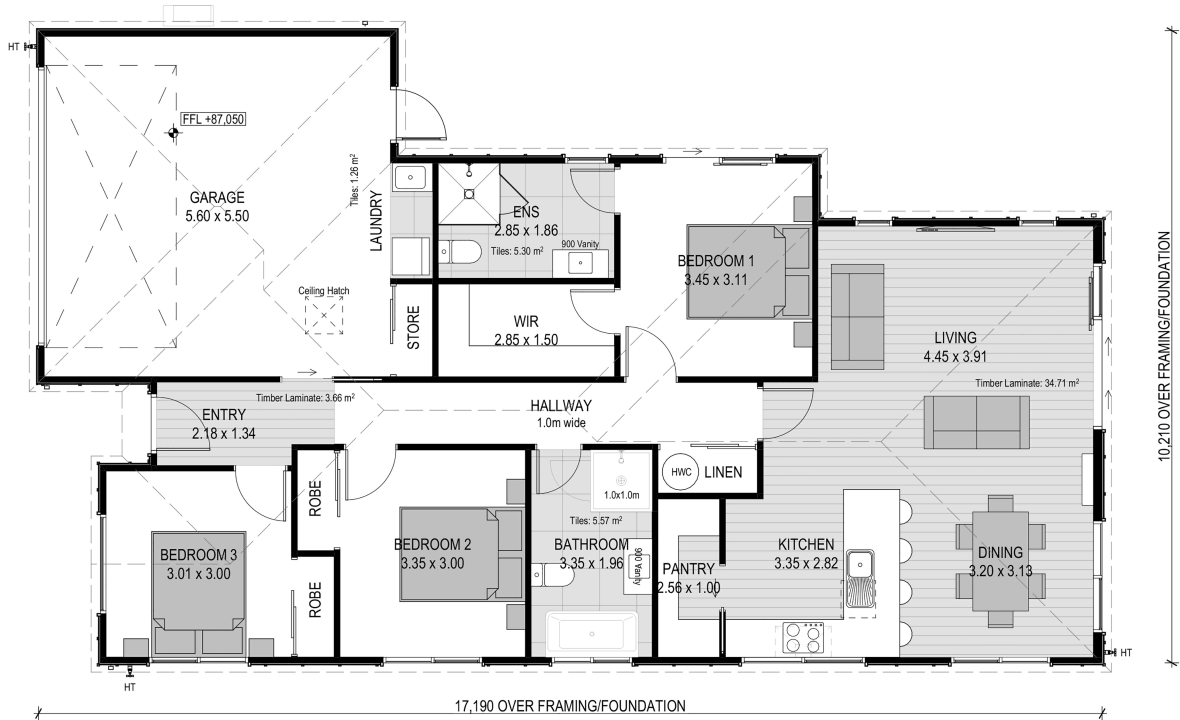
[mikegreerhomes.co.nz](http://mikegreerhomes.co.nz)

# Warkworth Ridge 5 Mahinga Ave, Warkworth Ridge

UA0703



dwelling size	section size	3	2	2	1	2
144 m <sup>2</sup>	430 m <sup>2</sup>					



## After Sales Care

At Mike Greer Homes we are committed to making the build journey as stress-free as possible. Our After Sales Care programme addresses any maintenance issues and ensures that any remedial work is undertaken once it is logged and approved.

Disclaimer. While every reasonable effort has been made by Mike Greer Homes to ensure the information correctly illustrates the dwelling and section, this material may only be used by the Purchaser for illustrative and guidance purposes. Mike Greer Homes accepts no responsibility for any differences, errors or omissions which may become apparent during or on completion of the dwelling.

