

\$789,000

mikegreerhomes

Kaiapoi

Lot 232 Beach Grove - 4 McGarry Drive



for sale

dwelling size | section size
163 m² | 491 m²

homes
for
sale

This three double bedroom, double garage, fully landscaped home has been designed to maximise space and sun. The North-facing open plan living, dining and kitchen area forms the centre of the home and offers great indoor/outdoor flow. The well-appointed family bathroom and ensuite both feature quality fixtures and fittings that complement the spacious bedroom and living areas.

Beach Grove is only 900 metres from the heart of Kaiapoi, and is also in close proximity to a range of outdoor pursuits such as fishing, cycling, white baiting, swimming, kayaking, rowing, walking and golfing. Sections and homes in Beach Grove represent exceptional value in such a convenient location with Christchurch city only a short commute away.

more features.

- + Ensuite
- + Fully Landscaped
- + Godfrey Hirst Flooring
- + Samsung Appliances
- + Stone Benchtop
- + Walk-in Pantry
- + Walk-in Wardrobe

Turn Key

A Turn Key home is an all-inclusive package that only requires 10% deposit.

bringing you **more**






03 354 0166

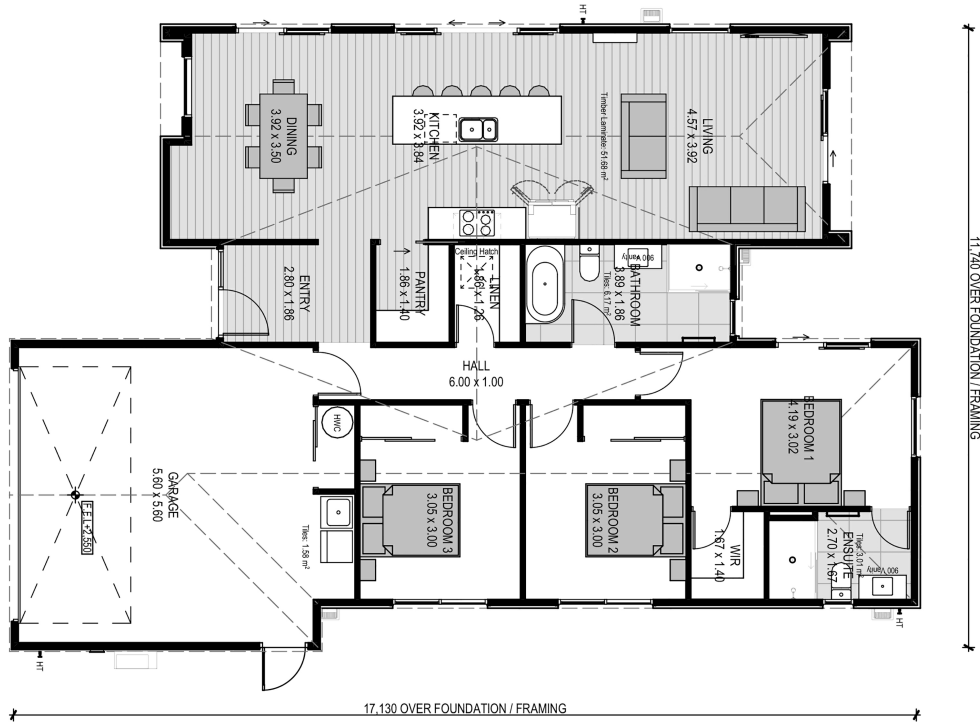
mikegreerhomes.co.nz

Beach Grove Lot 232 Beach Grove - 4 McGarry Drive

CT8052



dwelling size	section size	3	2	2	1	2
163 m ²	491 m ²					



After Sales Care

At Mike Greer Homes we are committed to making the build journey as stress-free as possible. Our After Sales Care programme addresses any maintenance issues and ensures that any remedial work is undertaken once it is logged and approved.

Disclaimer. While every reasonable effort has been made by Mike Greer Homes to ensure the information correctly illustrates the dwelling and section, this material may only be used by the Purchaser for illustrative and guidance purposes. Mike Greer Homes accepts no responsibility for any differences, errors or omissions which may become apparent during or on completion of the dwelling.

