

\$649,000

mikegreerhomes

Halswell

House 5 River Stone - River Stone Dr



for sale

dwelling size | section size
98 m² | 224 m²

homes
for
sale

This home combines a practical floor plan with attention to detail to maximise functionality and lifestyle. The two double bedrooms are complemented by a study, family bathroom and an open plan kitchen, dining and living area. This North-facing living area opens out onto the fully landscaped section and outdoor entertaining space. An internal access single garage completes the package.

Live a relaxed life in the vibrant and growing community of Halswell. Stay local with amenities close by, or venture out with a less than 20 minute drive into the city centre. River Stone has beautiful views of the hills but still has a rural feel to it - something that is hard to come by this close to the city. Walkways and cycleways will link sections in River Stone to a stormwater reserve at the southern end of the subdivision, where an existing waterway will be enhanced and lead you through to the Halswell Quarry and domain. There is something for everyone in River Stone!

more features.

- +
- +
- +
- +
- +
- +








A Turn Key home is an all-inclusive package that only requires 10% deposit.

bringing you more

03 354 0166

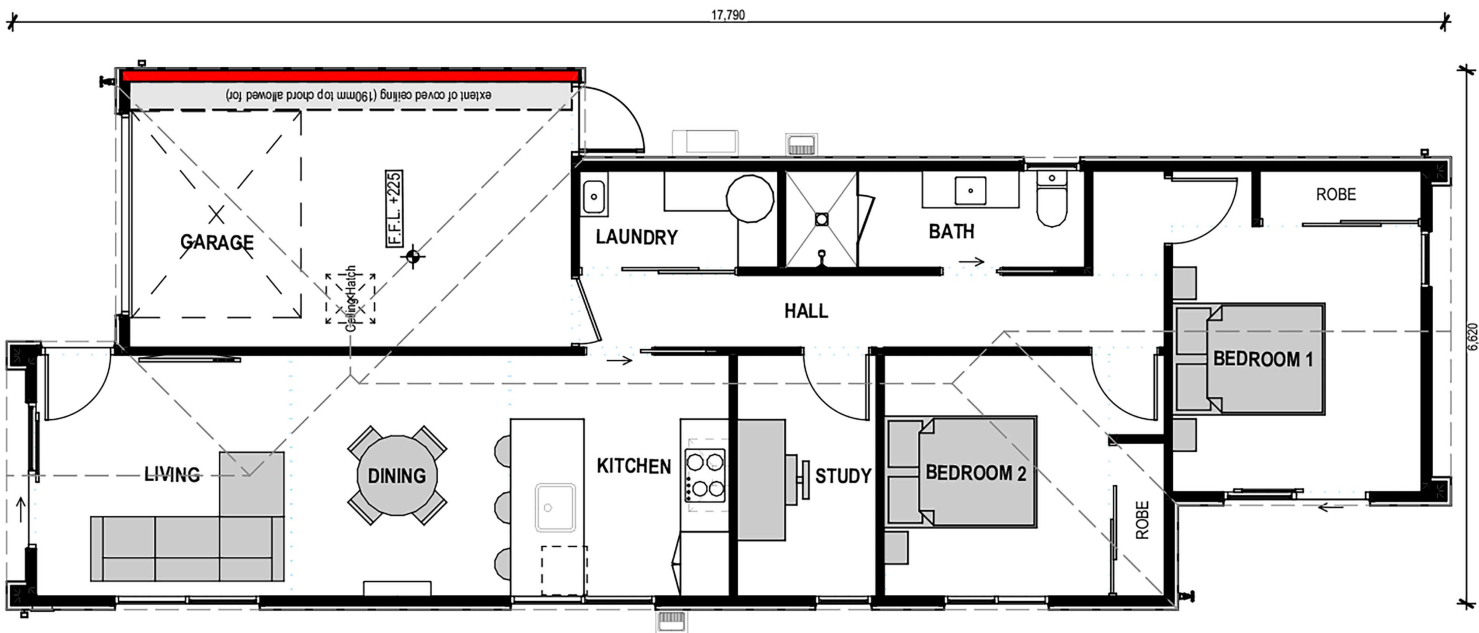
mikegreerhomes.co.nz

River Stone House 5 River Stone - River Stone Dr

dwelling size	section size	2	1	1	1	1
98 m ²	224 m ²					

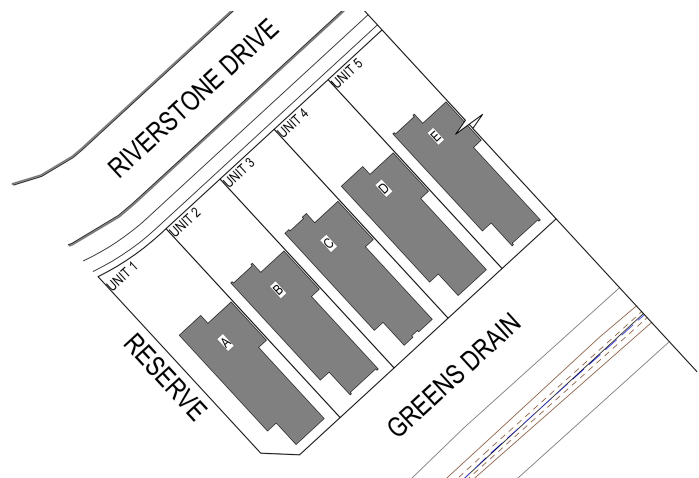


CT7473



After Sales Care

At Mike Greer Homes we are committed to making the build journey as stress-free as possible. Our After Sales Care programme addresses any maintenance issues and ensures that any remedial work is undertaken once it is logged and approved.



Disclaimer. While every reasonable effort has been made by Mike Greer Homes to ensure the information correctly illustrates the dwelling and section, this material may only be used by the Purchaser for illustrative and guidance purposes. Mike Greer Homes accepts no responsibility for any differences, errors or omissions which may become apparent during or on completion of the dwelling.