

# \$1,112,000

# mikegreerhomes

## Richmond

Lot 14 Pukerua, Richmond



Artist Impression Only

# for sale

dwelling size | section size  
213 m<sup>2</sup> | 684 m<sup>2</sup>

homes  
for  
sale

Lot 14 has been designed with family and style in mind. Boasting four double bedrooms and two spacious bathrooms, North facing open plan living and dining areas, this house is perfect for modern day living. A separate lounge room and internal laundry ensures functionality and privacy for all. Finished with quality fixtures and fittings throughout, this home offers great value and an easy lifestyle.

The new Pukerua subdivision near the Richmond Hills seamlessly connects outdoor living with the conveniences of urban life. Boasting proximity to scenic walking tracks and the newly announced New World Supermarket, residents will relish in the ease of accessing everyday essentials whilst indulging in all that the great outdoor Tasman Region has to offer. Situated within arms reach of schools, daycare facilities, and nestled in a rapidly growing area, Pukerua offers the epitome of modern convenience.





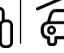
### more features.

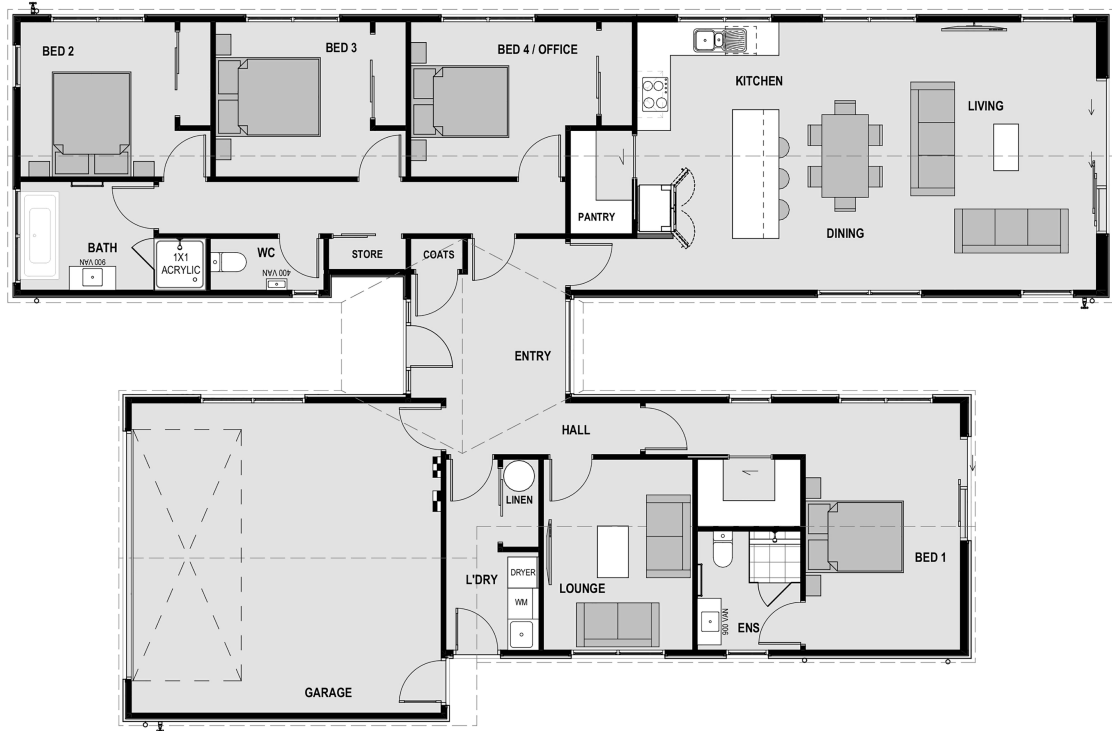
- +
- +
- +
- +
- +
- +
- +
- +
- +

### Turn Key

A Turn Key home is an all-inclusive package that only requires 10% deposit.

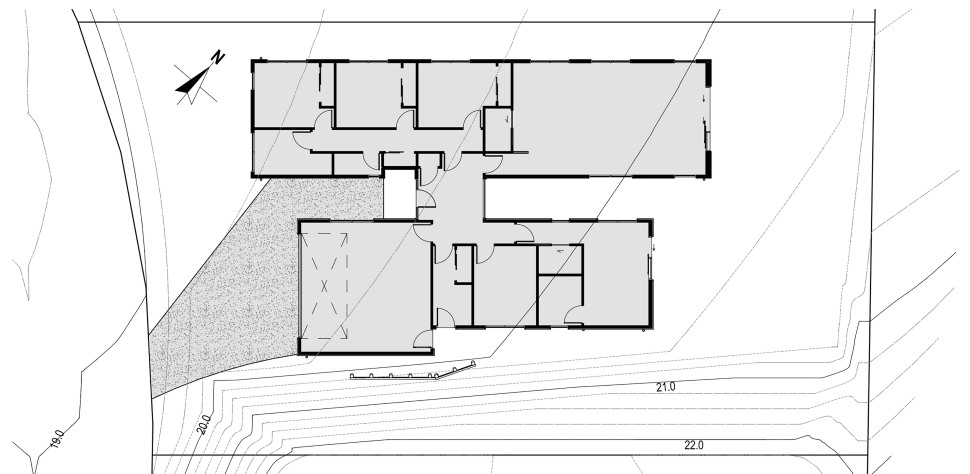
Pukerua Lot 14 Pukerua, Richmond

dwelling size	section size	4	2	2	2	2
213 m <sup>2</sup>	684 m <sup>2</sup>					



**After Sales Care**

At Mike Greer Homes we are committed to making the build journey as stress-free as possible. Our After Sales Care programme addresses any maintenance issues and ensures that any remedial work is undertaken once it is logged and approved.



Disclaimer. While every reasonable effort has been made by Mike Greer Homes to ensure the information correctly illustrates the dwelling and section, this material may only be used by the Purchaser for illustrative and guidance purposes. Mike Greer Homes accepts no responsibility for any differences, errors or omissions which may become apparent during or on completion of the dwelling.