

\$965,000

mikegreerhomes

Cromwell

Lot 1072 Wooing Tree Estate Central Otago



Artist Impression Only

for sale

dwelling size | section size
131 m² | 262 m²

homes
for
sale

This well-designed home blends smart functionality with stylish finishes, creating a space that's both comfortable and practical for modern living. Offering three generous double bedrooms, it includes a contemporary family bathroom and a private ensuite for added convenience.

The open-plan kitchen, dining, and living area forms the heart of the home, thoughtfully configured to maximise space and natural light. The north-facing living zone enjoys excellent sun and flows effortlessly out to the fully landscaped section and dedicated outdoor entertaining area — perfect for relaxing or hosting guests.

Positioned in a premium location beside the reserve, this property enjoys an enviable sense of space and outlook, enhancing both privacy and lifestyle appeal. An internal-access single garage completes this impressive offering.

Fringed by vines, this new development will retain and celebrate its unique location, with pride of place reserved for the iconic Wooing Tree. The vineyard and its cellar door will remain a key focus of the

more features.

- ✦ Digital Key Entry
- ✦ 10 Year Registered Master Build Guarantee
- ✦ Open Plan Living
- ✦ Single Car Garaging
- ✦ Complete Turnkey Package, No Hidden Costs



Turn Key

A Turn Key home is an all-inclusive package that only requires 10% deposit.

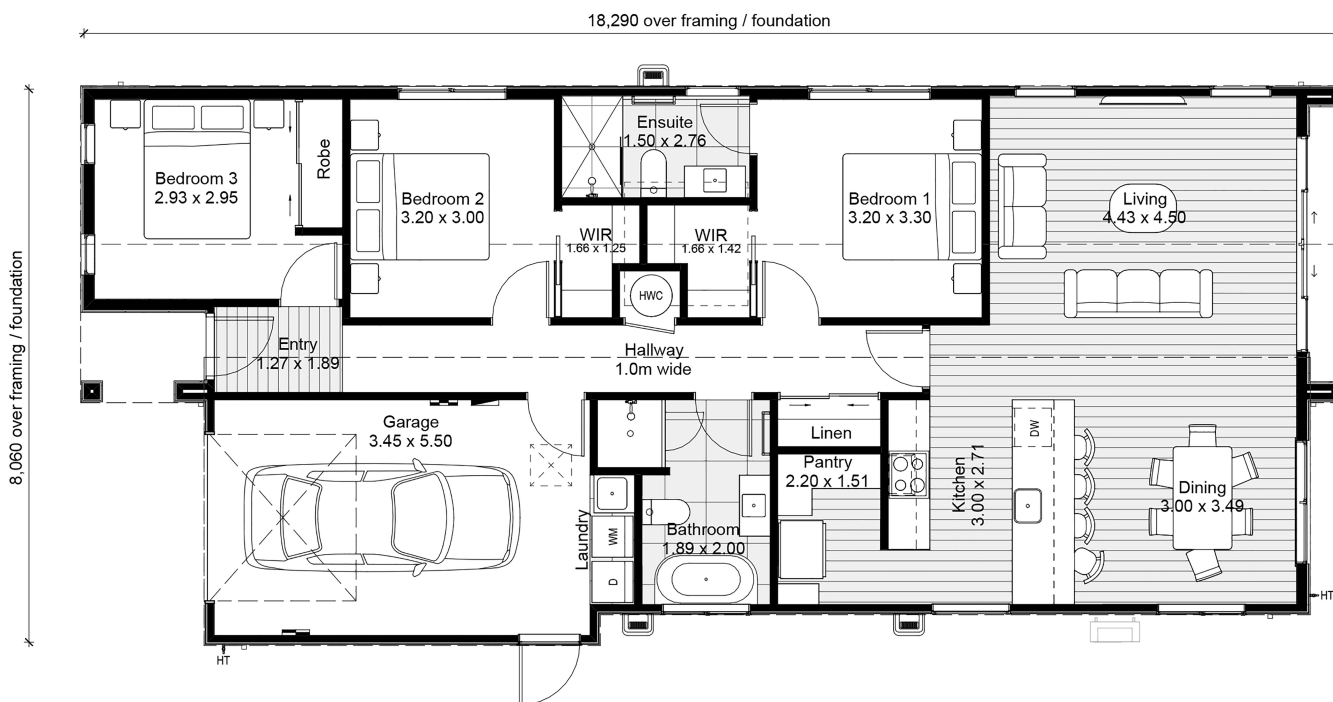
bringing you more

03 443 2065

mikegreerhomes.co.nz

Wooving Tree Estate Lot 1072 Wooving Tree Estate Central Otago

dwelling size	section size	3	2	2	1	1
131 m ²	262 m ²					



After Sales Care

At Mike Greer Homes we are committed to making the build journey as stress-free as possible. Our After Sales Care programme addresses any maintenance issues and ensures that any remedial work is undertaken once it is logged and approved.

Disclaimer. While every reasonable effort has been made by Mike Greer Homes to ensure the information correctly illustrates the dwelling and section, this material may only be used by the Purchaser for illustrative and guidance purposes. Mike Greer Homes accepts no responsibility for any differences, errors or omissions which may become apparent during or on completion of the dwelling.



WOIVING TREE AVENUE

