

# \$739,000

# mikegreerhomes

## Te Atatu Peninsula

Townhouse 5, 721 Te Atatu Road, Auckland



# for sale

dwelling size

63 m<sup>2</sup>

homes  
for  
sale

This two storey home comes with a carpark and features an open plan kitchen, dining and living area that connects to the outdoor space plus a separate laundry and toilet on the ground floor with two bedrooms and a bathroom on the first floor.

Te Atatu Peninsula is a coastal gem, offering the perfect balance of seaside living and urban convenience. Just 20 minutes from Auckland's CBD and a short drive from the Northwestern Motorway, this sought-after location provides seamless connectivity for city professionals and families alike. Nestled only 900 metres from the waterfront, residents can explore scenic walkways that showcase stunning views of Auckland's skyline and the iconic Harbour Bridge.

Whether you're seeking a coastal escape or quick access to bustling city life, Te Atatu Peninsula delivers. This vibrant community is designed for those who value both convenience and lifestyle, making it an ideal place to call home.

 **Turn Key**

A Turn Key home is an all-inclusive package that only requires 10% deposit.

### more features.

- ✦ Fully Landscaped
- ✦ Complies with the Healthy Homes Standard
- ✦ 10 Year Registered Master Build Guarantee
- ✦ Open Plan Living
- ✦ Off-Street Carpark
- ✦ Separate Laundry

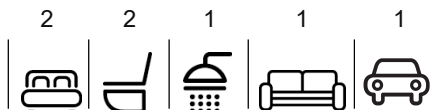
bringing you **more**

09 930 6270

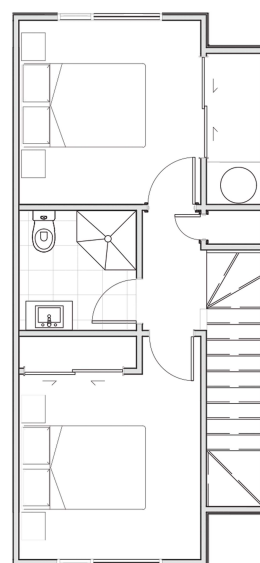
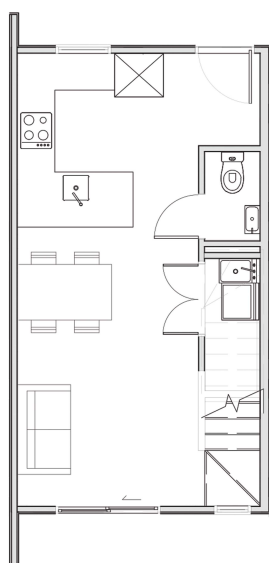
[mikegreerhomes.co.nz](http://mikegreerhomes.co.nz)

# Te Atatu Road Townhouse 5, 721 Te Atatu Road, Auckland

dwelling size  
63 m<sup>2</sup>

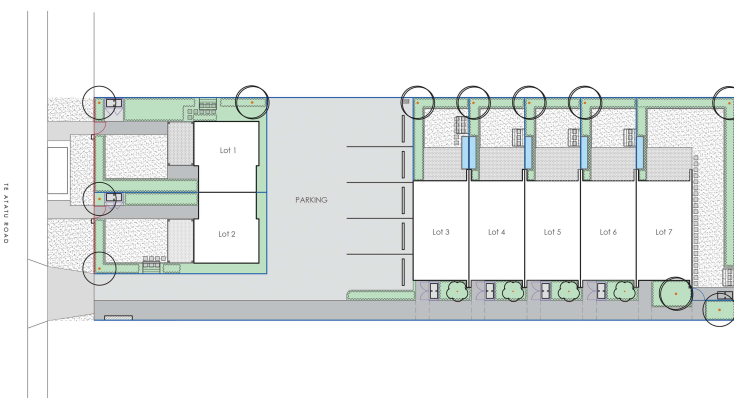


CA0444c



## After Sales Care

At Mike Greer Homes we are committed to making the build journey as stress-free as possible. Our After Sales Care programme addresses any maintenance issues and ensures that any remedial work is undertaken once it is logged and approved.



Disclaimer. While every reasonable effort has been made by Mike Greer Homes to ensure the information correctly illustrates the dwelling and section, this material may only be used by the Purchaser for illustrative and guidance purposes. Mike Greer Homes accepts no responsibility for any differences, errors or omissions which may become apparent during or on completion of the dwelling.