

\$934,500

mikegreerhomes

Omokoroa

Lot 166, Korora Crescent, Harbour Ridge



for sale

dwelling size	section size
138 m ²	462 m ²

homes
for
sale

This stylish 3 double bedroom home has a spacious open plan design and a North facing easy care section that is fully landscaped and ideal for relaxing and entertaining. All of the bedrooms are well appointed, with a separate family bathroom and ensuite. The home has been finished to a high standard with quality fixtures and fittings throughout. It offers an internal access double garage and has all driveways and fencing included in the sale price.

Design subject to Developers Approval.

This growing little town with a great community spirit offers a beachy lifestyle with great schools, pre-schools and plenty of activities for those into sport, walking and boating activities. With a Fresh Choice supermarket, cafes and good medical facilities close by, there is little need to travel to town.

more features.

- + Two Car Garaging
- + After Sales Care Program
- + Fully Landscaped
- + LED Lighting
- + 10 Year Registered Master Build Guarantee
- + Open Plan Living
- + Samsung Appliances



A Turn Key home is an all-inclusive package that only requires 10% deposit.

bringing you **more**


07 281 1560

mikegreerhomes.co.nz

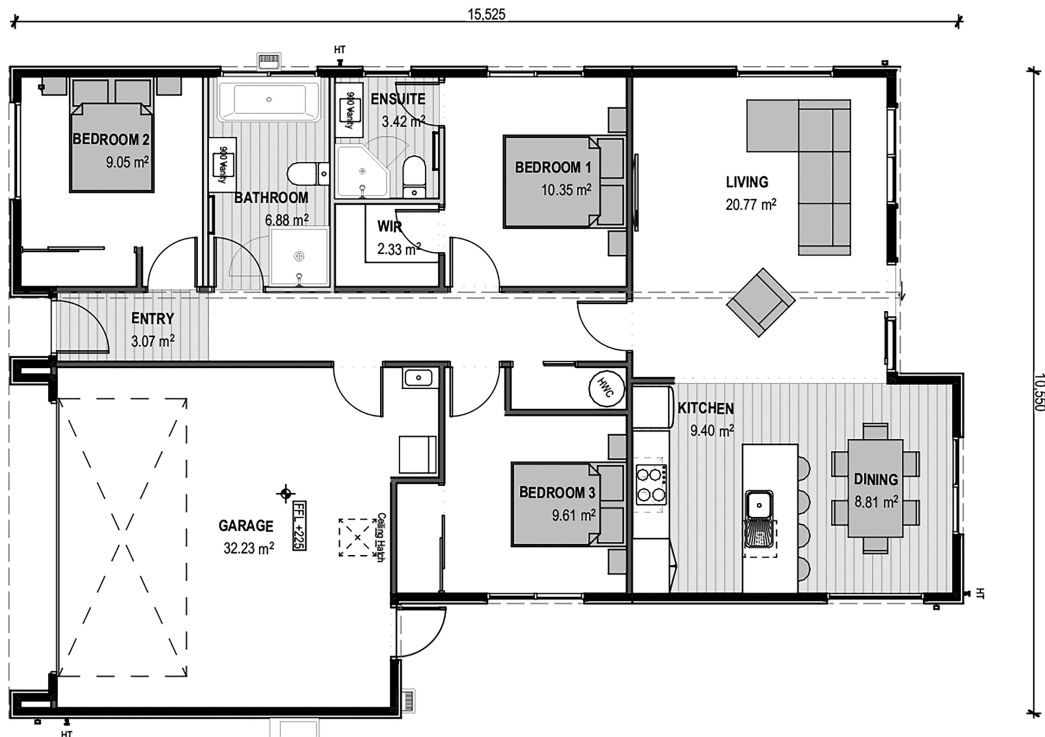
Harbour Ridge Lot 166, Korora Crescent, Harbour Ridge

dwelling size 138 m² section size 462 m²

3 2 2 1 2




TA0435



After Sales Care

At Mike Greer Homes we are committed to making the build journey as stress-free as possible. Our After Sales Care programme addresses any maintenance issues and ensures that any remedial work is undertaken once it is logged and approved.

Disclaimer. While every reasonable effort has been made by Mike Greer Homes to ensure the information correctly illustrates the dwelling and section, this material may only be used by the Purchaser for illustrative and guidance purposes. Mike Greer Homes accepts no responsibility for any differences, errors or omissions which may become apparent during or on completion of the dwelling.

