

# \$999,000

# mikegreerhomes

## Wanaka

Lot 11 Northlake, Wanaka



# for sale

dwelling size | section size  
113 m<sup>2</sup> | 304 m<sup>2</sup>

homes  
for  
sale

Perfect for an Investment or first home buyer, this home is designed to maximise space and sun. The open plan living, dining and kitchen area is the centre of the home, and offers a great outlook onto the easy care section. With 2 double bedrooms, a main bathroom and ensuite, the house combines great functionality with a stylish feel. The home has an internal access single garage, and the section is fully landscaped with all fencing and driveways included.

Northlake is one of Wanaka's premier residential developments, well located close to the town centre, schools, Lake Wanaka, the Clutha River and all the recreational opportunities that they bring. Set amongst a variety of outdoor spaces and within walking distance of home is the Northlake Village Centre which provides valuable community facilities.

### more features.

- ✦ Digital Key Entry
- ✦ 10 Year Registered Master Build Guarantee
- ✦ Open Plan Living
- ✦ Samsung Appliances
- ✦ Single Car Garaging



A Turn Key home is an all-inclusive package that only requires 10% deposit.

bringing you more

03 443 2065

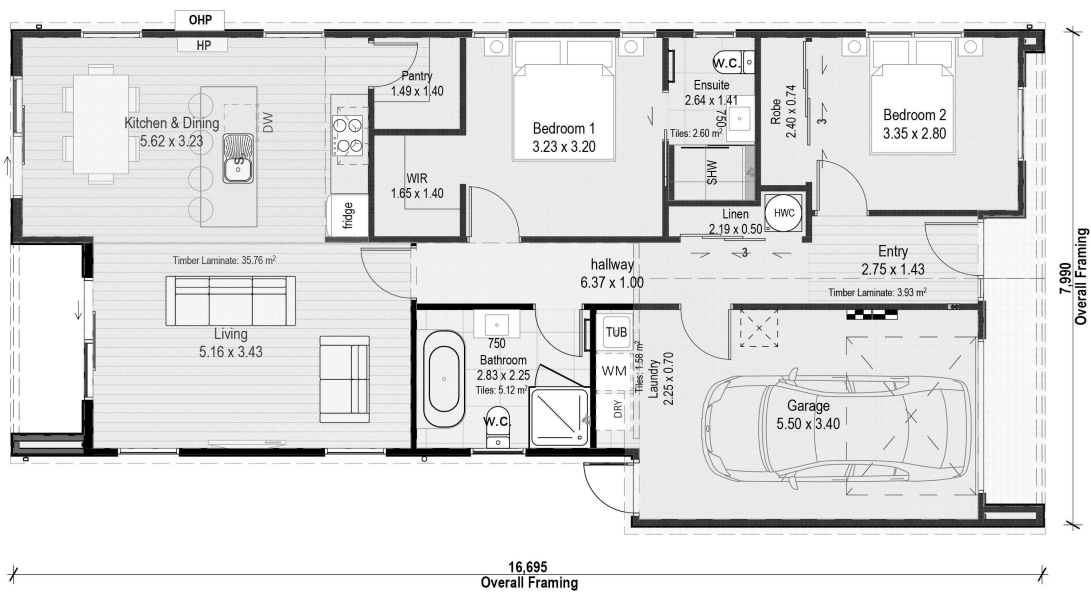
mikegreerhomes.co.nz

# Northlake Lot 11 Northlake, Wanaka

dwelling size | section size

113 m<sup>2</sup> | 304 m<sup>2</sup>

2 2 2 1 1



Artist Impression Only



## After Sales Care

At Mike Greer Homes we are committed to making the build journey as stress-free as possible. Our After Sales Care programme addresses any maintenance issues and ensures that any remedial work is undertaken once it is logged and approved.

Disclaimer. While every reasonable effort has been made by Mike Greer Homes to ensure the information correctly illustrates the dwelling and section, this material may only be used by the Purchaser for illustrative and guidance purposes. Mike Greer Homes accepts no responsibility for any differences, errors or omissions which may become apparent during or on completion of the dwelling.

