

# \$649,000

# mikegreerhomes

## Belfast

Lot 209 Spring Grove - 6 Llew Summers Street



# for sale

|                   |                    |
|-------------------|--------------------|
| dwelling size     | section size       |
| 98 m <sup>2</sup> | 196 m <sup>2</sup> |

homes  
for  
sale

This two bedroom + study home has an open plan design with indoor/outdoor flow to a North-facing outdoor living space with kwila decking. The bedrooms are well appointed, with a sizeable kitchen and a family bathroom. The home has been finished to a high standard with quality fixtures and fittings throughout. It offers an internal access single garage and has all driveways and fencing included in the sale price.

Spring Grove is a fast-growing subdivision just ten minutes North of Central Christchurch. You have the convenience of being in close proximity to a number of local shops and amenities, and the luxury of semi-rural amenities such as golf courses and recreational reserves. Spring Grove offers you the ideal location with a range of homes at an affordable price.

### more features.

- +
- +
- +
- +
- +

### Turn Key

A Turn Key home is an all-inclusive package that only requires 10% deposit.






bringing you **more**

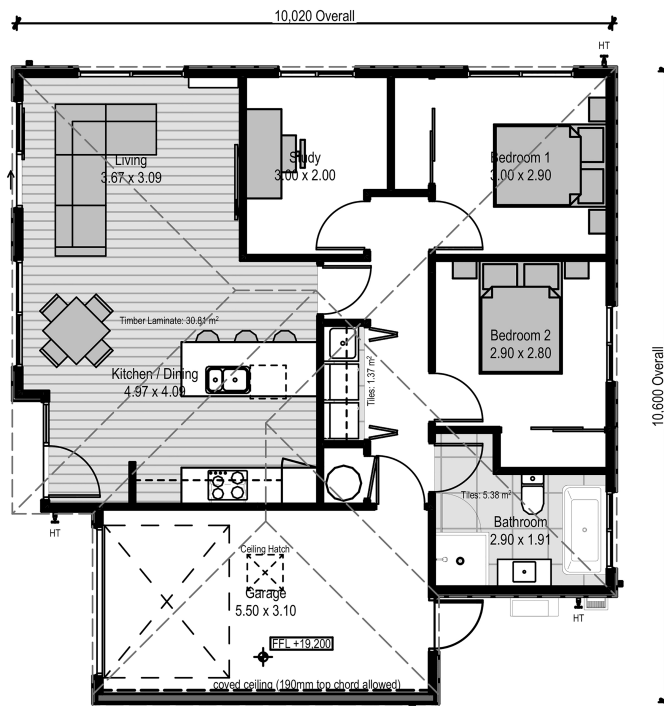
03 354 0166

[mikegreerhomes.co.nz](http://mikegreerhomes.co.nz)

# Spring Grove Lot 209 Spring Grove - 6 Llew Summers Street

CT7902

|                   |                    |   |   |   |   |   |
|-------------------|--------------------|---|---|---|---|---|
| dwelling size     | section size       | 2   | 1   | 1   | 1   | 1   |
| 98 m <sup>2</sup> | 196 m <sup>2</sup> |  |  |  |  |  |



## After Sales Care

At Mike Greer Homes we are committed to making the build journey as stress-free as possible. Our After Sales Care programme addresses any maintenance issues and ensures that any remedial work is undertaken once it is logged and approved.

Disclaimer. While every reasonable effort has been made by Mike Greer Homes to ensure the information correctly illustrates the dwelling and section, this material may only be used by the Purchaser for illustrative and guidance purposes. Mike Greer Homes accepts no responsibility for any differences, errors or omissions which may become apparent during or on completion of the dwelling.

