

\$749,000

 **mikegreerhomes**

Halswell

House 12, Eastman Drive Development - Benrogan



for sale

dwelling size	section size
122 m ²	253 m ²

**homes
for
sale**

This three double bedroom home has a spacious open plan design and a North-facing easy care section that is fully landscaped and ideal for relaxing and entertaining. The bedrooms are well appointed, with a family bathroom and separate WC, finished to a high standard with quality fixtures and fittings. It offers an internal access single garage and has all driveways and fencing included in the sale price.

The Benrogan subdivision is nestled in the highly sought-after Halswell area. It provides access to neighboring reserves and boasts a breathtaking backdrop of the Port Hills, all while being conveniently located less than 10km from the heart of Christchurch. This location allows you to enjoy the serenity of nature while still being close to the wealth of amenities that Halswell has to offer.

more features.

- ✚ Fully Landscaped
- ✚ Godfrey Hirst Flooring
- ✚ LED Lighting
- ✚ Open Plan Living
- ✚ Stone Benchtop
- ✚ Walk-in Pantry






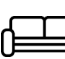

A Turn Key home is an all-inclusive package that only requires 10% deposit.

bringing you **more**

03 354 0166

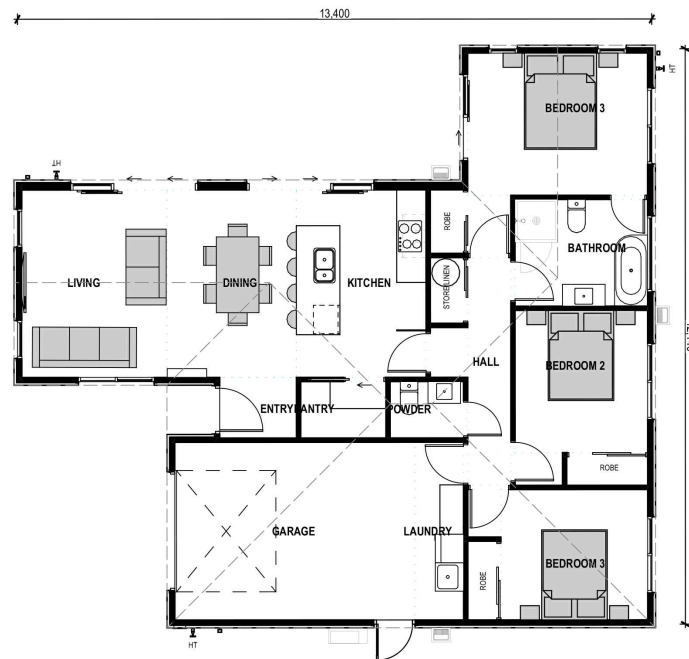
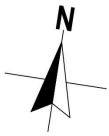
mikegreerhomes.co.nz

Benrogan House 12, Eastman Drive Development - Benrogan

dwelling size	section size	3	2	1	1	1
122 m ²	253 m ²					

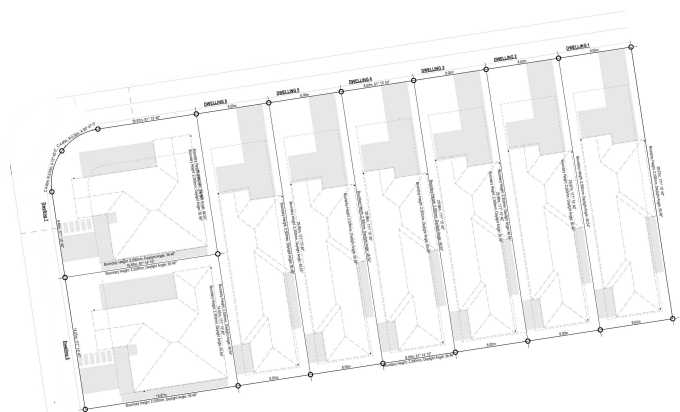


CT7538



After Sales Care

At Mike Greer Homes we are committed to making the build journey as stress-free as possible. Our After Sales Care programme addresses any maintenance issues and ensures that any remedial work is undertaken once it is logged and approved.



Disclaimer. While every reasonable effort has been made by Mike Greer Homes to ensure the information correctly illustrates the dwelling and section, this material may only be used by the Purchaser for illustrative and guidance purposes. Mike Greer Homes accepts no responsibility for any differences, errors or omissions which may become apparent during or on completion of the dwelling.