

Napier

Lot 3, 100 Eriksen Rd, Te Awa



Artist Impression Only

for sale

dwelling size	section size
157 m ²	380 m ²

**homes
for
sale**

Offering three double bedrooms and an open plan living, kitchen and dining area, this home is perfectly designed to maximise space and indoor/outdoor flow. The home features an internal access double garage and a private section perfect for entertaining. Complementing the living and bedroom spaces are the family bathroom and ensuite that are both well-appointed with quality fixtures and fittings.

Enjoy coastal living in Napier's beautiful seaside suburb of Te Awa, only a ten minute drive from Napier's city centre. Te Awa School and Napier Boys' High School are in close proximity making it a perfect area for growing families. There is an abundance of green spaces nearby with the Beach Domain and the Maraenui Golf Club overlooking the sea. Napier's city centre will provide you with restaurants, retail shopping, supermarkets, entertainment and more.




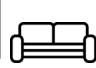

more features.

- ✦ Two Car Garaging
- ✦ Ensuite
- ✦ 10 Year Registered Master Build Guarantee
- ✦ Open Plan Living
- ✦ Smeg Appliances
- ✦ Separate Laundry

 **Turn Key**

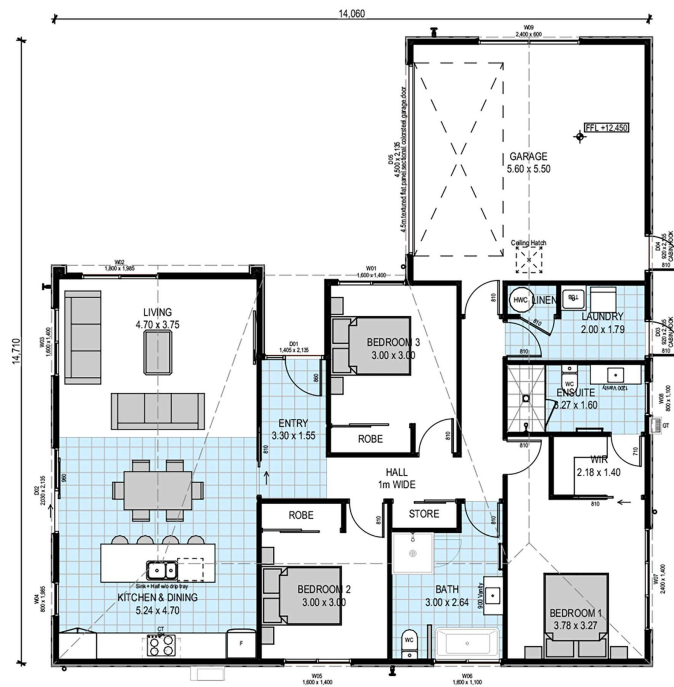
A Turn Key home is an all-inclusive package that only requires 10% deposit.

Te Awa Lot 3, 100 Eriksen Rd, Te Awa

dwelling size	section size	3	2	2	1	2
157 m ²	380 m ²					



HB1007



After Sales Care

At Mike Greer Homes we are committed to making the build journey as stress-free as possible. Our After Sales Care programme addresses any maintenance issues and ensures that any remedial work is undertaken once it is logged and approved.

Disclaimer. While every reasonable effort has been made by Mike Greer Homes to ensure the information correctly illustrates the dwelling and section, this material may only be used by the Purchaser for illustrative and guidance purposes. Mike Greer Homes accepts no responsibility for any differences, errors or omissions which may become apparent during or on completion of the dwelling.

