

# \$699,000

# mikegreerhomes

## Belfast

Lot 197 Spring Grove - 53 Bill Hammond Drive



Artist Impression Only

# for sale

dwelling size | section size  
118 m<sup>2</sup> | 263 m<sup>2</sup>

homes  
for  
sale

This three bedroom home has an open plan design and a North-facing easy care section that is fully landscaped, ideal for relaxing and entertaining. All of the bedrooms are well appointed, with a family bathroom and separate WC. The home features quality fixtures and fittings throughout. It offers an internal access single garage and has all driveways and fencing included in the sale price.

Spring Grove is a fast-growing subdivision just ten minutes North of Central Christchurch. You have the convenience of being in close proximity to a number of local shops and amenities, and the luxury of semi-rural amenities such as golf courses and recreational reserves. Spring Grove offers you the ideal location with a range of homes at an affordable price.

### more features.

- +
- +
- +
- +
- +

### Turn Key

A Turn Key home is an all-inclusive package that only requires 10% deposit.

bringing you more

03 354 0166

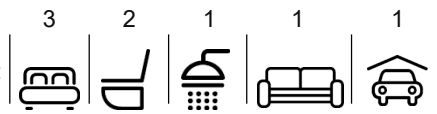
mikegreerhomes.co.nz

# Spring Grove Lot 197 Spring Grove - 53 Bill Hammond Drive

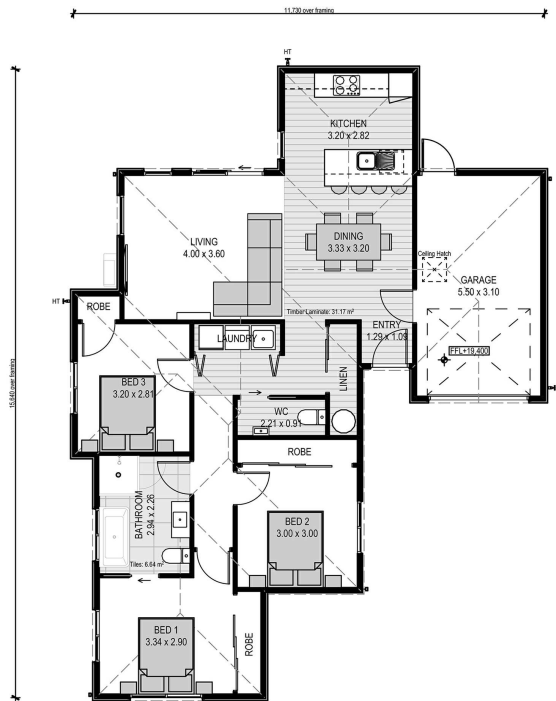
dwelling size | section size

118 m<sup>2</sup> | 263 m<sup>2</sup>

3 2 1 1 1




CT7884



## After Sales Care

At Mike Greer Homes we are committed to making the build journey as stress-free as possible. Our After Sales Care programme addresses any maintenance issues and ensures that any remedial work is undertaken once it is logged and approved.

Disclaimer. While every reasonable effort has been made by Mike Greer Homes to ensure the information correctly illustrates the dwelling and section, this material may only be used by the Purchaser for illustrative and guidance purposes. Mike Greer Homes accepts no responsibility for any differences, errors or omissions which may become apparent during or on completion of the dwelling.

