

\$929,000

Belfast

Lot 78 Spring Grove - 63 Bill Hammond Dr



for sale

dwelling size | section size
192 m² | 429 m²

homes
for
sale

With four double bedrooms and spacious living areas, this home is perfectly appointed for growing families wanting the warmth and style of a new home. The indoor/outdoor flow makes entertaining easy, with direct access to the courtyard off the open plan living area. Showcasing the best in modern fixtures and fittings, the kitchen and bathrooms are all designed to combine functionality with flair and comfort. A double garage and storage throughout the home to keep things tidy and secure makes family living even easier.

Spring Grove is a fast-growing subdivision just ten minutes North of Central Christchurch. You have the convenience of being in close proximity to a number of local shops and amenities, and the luxury of semi-rural amenities such as golf courses and recreational reserves. Spring Grove offers you the ideal location with a range of homes at an affordable price.

more features.

- +
- +
- +
- +
- +
- +

Turn Key


A Turn Key home is an all-inclusive package that only requires 10% deposit.

Spring Grove Lot 78 Spring Grove - 63 Bill Hammond Dr

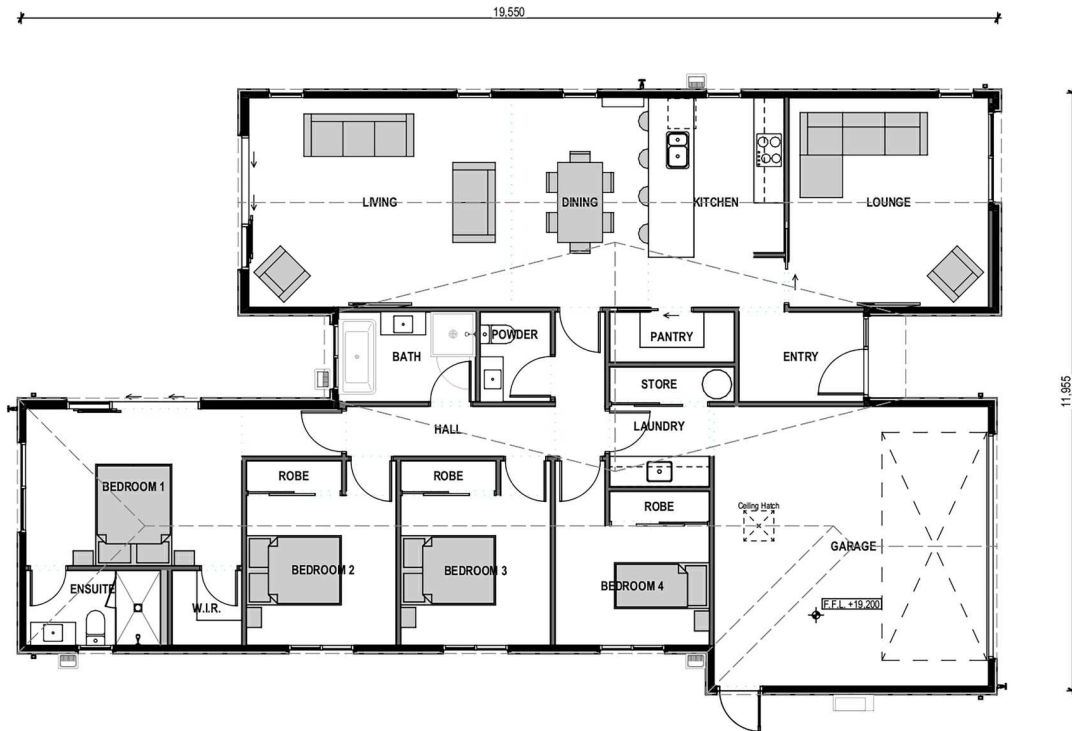
dwelling size | section size

192 m² | 429 m²

4 2 2 2 2




CT7555



After Sales Care

At Mike Greer Homes we are committed to making the build journey as stress-free as possible. Our After Sales Care programme addresses any maintenance issues and ensures that any remedial work is undertaken once it is logged and approved.

Disclaimer. While every reasonable effort has been made by Mike Greer Homes to ensure the information correctly illustrates the dwelling and section, this material may only be used by the Purchaser for illustrative and guidance purposes. Mike Greer Homes accepts no responsibility for any differences, errors or omissions which may become apparent during or on completion of the dwelling.

