

\$439,000

mikegreerhomes

Belfast

PU55 Spring Grove LSV - 12/40 Atawhai Lane



Artist Impression Only

for sale

dwelling size | section size
50 m² | Common Ground

homes
for
sale

Step into ease and security with these thoughtfully designed over-55s units, perfect for downsizing without compromising on quality. The layout includes an open-plan kitchen and living, a spacious master bedroom with ensuite, and ample storage. Each unit also features high-quality finishes and a convenient car park. Located in a vibrant community, these homes offer the ideal blend of independence and support for your golden years.

Spring Grove Lifestyle Village brings together like-minded active over 55 year retirees or semi-retirees, each in their own freehold property. An open village setting with a central gathering place will create a wealth of opportunities for residents to forge new connections, yet provide the freedom and space they want to live the life they choose. Plus, with properties owned freehold, the potential for growth is far greater than a traditional retirement village. SGLV offers a range of new home options in a secure and welcoming community.

more features.

- ✦ Godfrey Hirst Flooring
- ✦ Open Plan Living
- ✦ Smeg Appliances
- ✦ Stone Benchtop
- ✦ Tiled Shower

Turn Key

A Turn Key home is an all-inclusive package that only requires 10% deposit.

bringing you **more**

03 354 0166

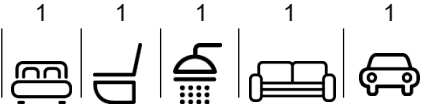
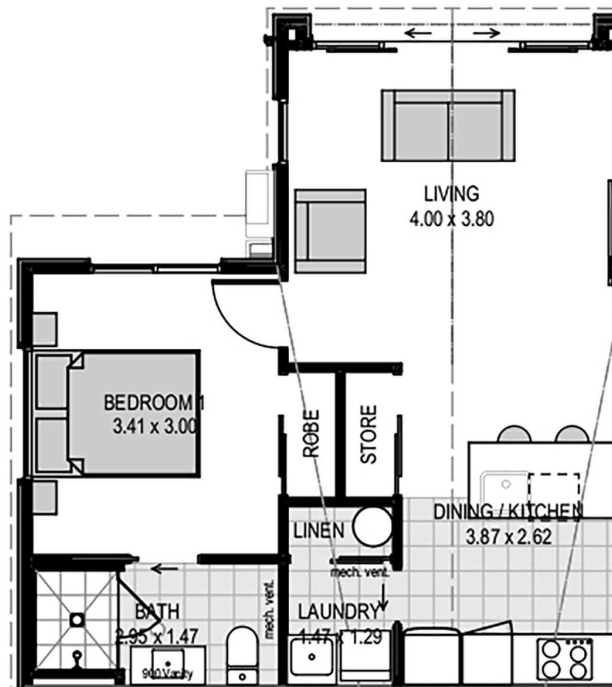
mikegreerhomes.co.nz

Spring Grove Lifestyle Village (Over 55's) PU55 Spring Grove LSV - 12/40 Atawha

MK-CT70441

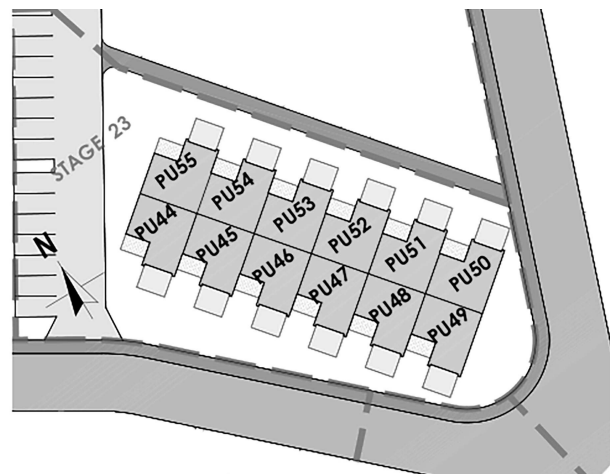
dwelling size | 50 m² | Common Ground

1 1 1 1 1

After Sales Care

At Mike Greer Homes we are committed to making the build journey as stress-free as possible. Our After Sales Care programme addresses any maintenance issues and ensures that any remedial work is undertaken once it is logged and approved.



Disclaimer. While every reasonable effort has been made by Mike Greer Homes to ensure the information correctly illustrates the dwelling and section, this material may only be used by the Purchaser for illustrative and guidance purposes. Mike Greer Homes accepts no responsibility for any differences, errors or omissions which may become apparent during or on completion of the dwelling.