

# \$759,000

# mikegreerhomes

## Halswell

House 7 Sabys Estate - Candys Road



# for sale

dwelling size	section size
120 m <sup>2</sup>	290 m <sup>2</sup>

homes  
for  
sale

This home has a thoughtful floor plan that combines three double bedrooms, two bathrooms and open plan living. The kitchen flows nicely with the North-facing dining and living areas to create an overall space that opens out onto the patio. Finished with quality fixtures and fittings throughout and a fully landscaped section, this home offers great value and an easy lifestyle.

Sabys Estate is positioned on the corner of Sabys Road and Quaifes Road, just minutes' walk from Halswell Primary School and the bustling Shopping Centre. Designed to cater for families and nature enthusiasts, Sabys Estate offers the convenience of outdoor pursuits at your fingertips; having the Halswell Quarry less than five-minutes' away as well as the tranquil Creamery Ponds bordering this development. A short drive into the Halswell township ensures all amenities are found within easy reach, while remaining less than 15-minutes into the City Centre.



**Turn Key**

A Turn Key home is an all-inclusive package that only requires 10% deposit.

### more features.





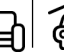
- + Ensuite
- + Fully Landscaped
- + Godfrey Hirst Flooring
- + Open Plan Living
- + Stone Benchtop
- + Tiled Floors to Wet Areas

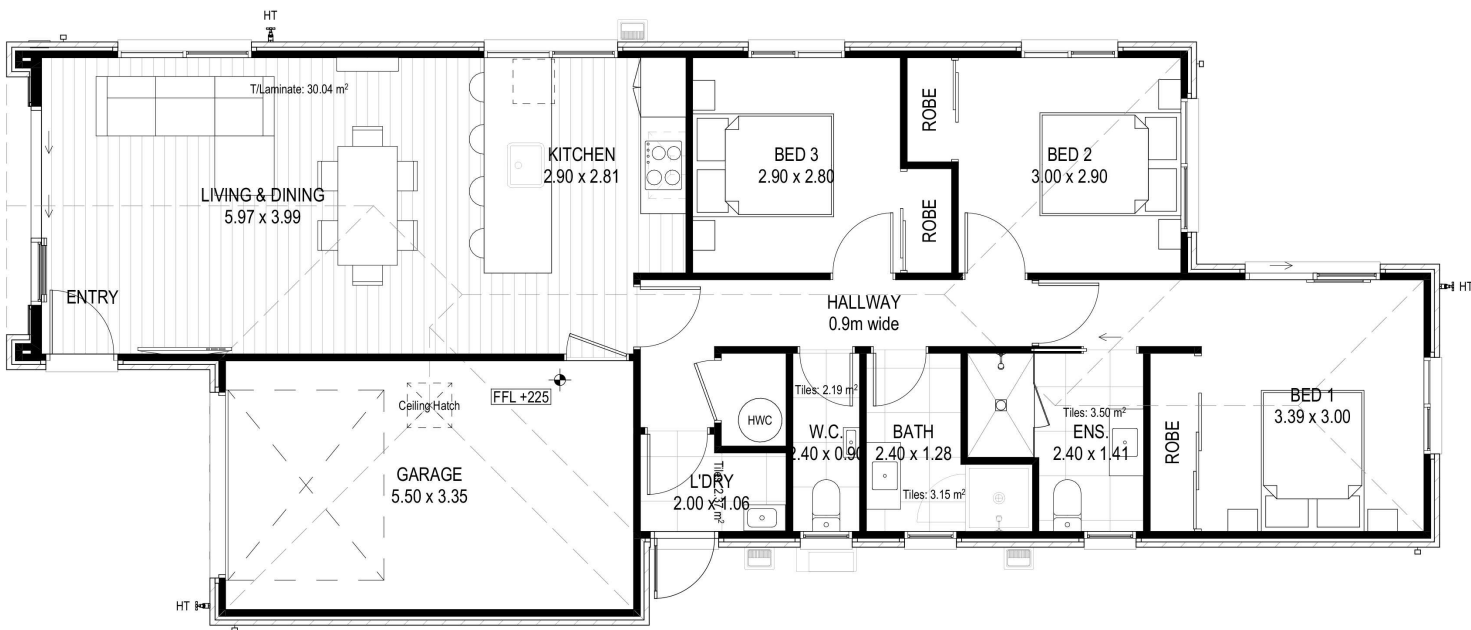
bringing you **more**

03 354 0166

[mikegreerhomes.co.nz](http://mikegreerhomes.co.nz)

## Sabys Estate House 7 Sabys Estate - Candys Road

dwelling size	section size	3	2	2	1	1
120 m <sup>2</sup>	290 m <sup>2</sup>					


**CT7795**


### After Sales Care

At Mike Greer Homes we are committed to making the build journey as stress-free as possible. Our After Sales Care programme addresses any maintenance issues and ensures that any remedial work is undertaken once it is logged and approved.

Disclaimer. While every reasonable effort has been made by Mike Greer Homes to ensure the information correctly illustrates the dwelling and section, this material may only be used by the Purchaser for illustrative and guidance purposes. Mike Greer Homes accepts no responsibility for any differences, errors or omissions which may become apparent during or on completion of the dwelling.

