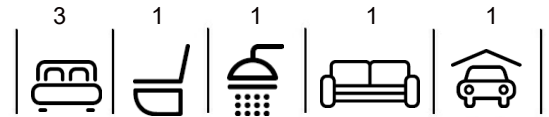


# \$699,000

# mikegreerhomes

## Belfast

Lot 197a Spring Grove - 53a Bill Hammond Drive



# for sale

dwelling size | section size  
115 m<sup>2</sup> | 236 m<sup>2</sup>

homes  
for  
sale

Offering three double bedrooms and an open plan living, kitchen and dining area, this home is perfectly designed to maximise space and indoor/outdoor flow. The home features an internal access single garage and a fully landscaped private section. Complementing the living and bedroom spaces are the family bathroom and separate WC that are both well-appointed with quality fixtures and fittings.

Spring Grove is a fast-growing subdivision just ten minutes North of Central Christchurch. You have the convenience of being in close proximity to a number of local shops and amenities, and the luxury of semi-rural amenities such as golf courses and recreational reserves. Spring Grove offers you the ideal location with a range of homes at an affordable price.

### more features.

- +
- +
- +
- +
- +

### Turn Key

A Turn Key home is an all-inclusive package that only requires 10% deposit.

bringing you **more**

03 354 0166

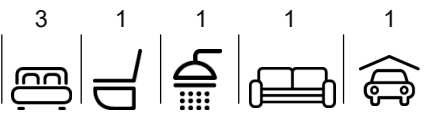
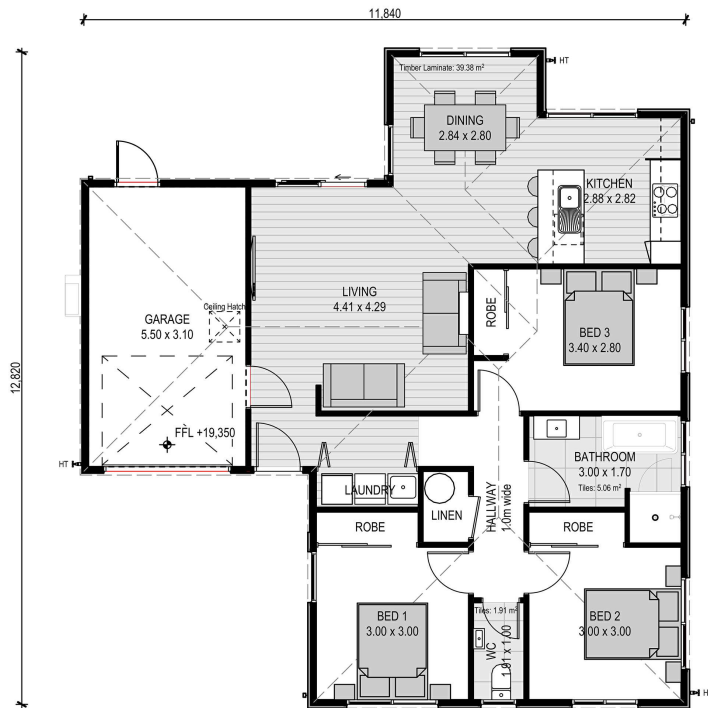
[mikegreerhomes.co.nz](http://mikegreerhomes.co.nz)

# Spring Grove Lot 197a Spring Grove - 53a Bill Hammond Drive

dwelling size | section size

115 m<sup>2</sup> | 236 m<sup>2</sup>

3 1 1 1 1

## After Sales Care

At Mike Greer Homes we are committed to making the build journey as stress-free as possible. Our After Sales Care programme addresses any maintenance issues and ensures that any remedial work is undertaken once it is logged and approved.

Disclaimer. While every reasonable effort has been made by Mike Greer Homes to ensure the information correctly illustrates the dwelling and section, this material may only be used by the Purchaser for illustrative and guidance purposes. Mike Greer Homes accepts no responsibility for any differences, errors or omissions which may become apparent during or on completion of the dwelling.

