

\$679,000

 **mikegreerhomes**

Belfast

Lot 54b Johns Park, 16a Chrysolite Place



for sale

dwelling size	section size
105 m ²	247 m ²

**homes
for
sale**

This home combines a practical floor plan to maximise functionality and lifestyle. The two bedrooms are complemented by a family bathroom and separate toilet, as well as an open plan kitchen, dining and living area. This North-facing living area opens out to the patio and fully landscaped section. An internal access single garage completes the package.

Johns Park Subdivision is situated 10km from Christchurch Central City. Enjoy multiple nearby recreational amenities including The Groynes and Styx Mill Conservation Reserve. You have the convenience of being in close proximity to local shops and amenities and a short drive to Northwood Supa Centa and the Northlink Shopping Centre. Close to SH1, Johns Park allows easy access to get on the motorway to head North, South, or to the airport as you please.

more features.

- ✚ Fully Landscaped
- ✚ Godfrey Hirst Flooring
- ✚ LED Lighting
- ✚ Open Plan Living
- ✚ Stone Benchtop



Turn Key






A Turn Key home is an all-inclusive package that only requires 10% deposit.

bringing you **more**

03 354 0166

mikegreerhomes.co.nz

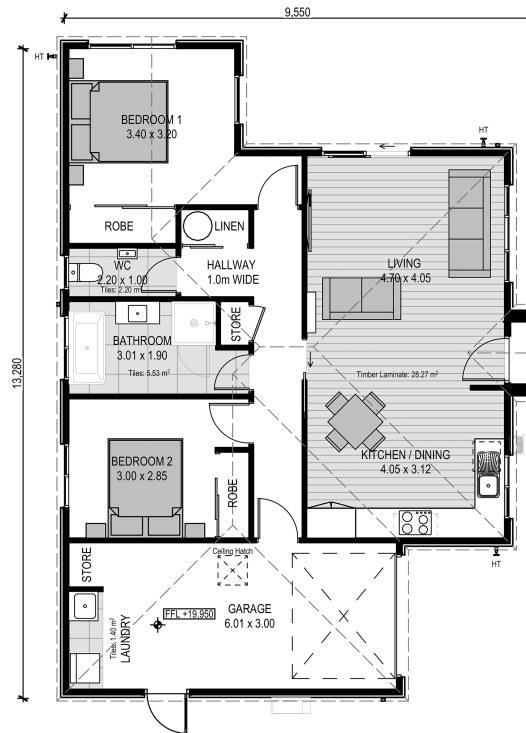
Johns Park Lot 54b Johns Park, 16a Chrysolite Place

dwelling size	section size	2	1	1	1	1
105 m ²	247 m ²					

KiwiSaver
Poua he Oranga



CT7803



After Sales Care

At Mike Greer Homes we are committed to making the build journey as stress-free as possible. Our After Sales Care programme addresses any maintenance issues and ensures that any remedial work is undertaken once it is logged and approved.

Disclaimer. While every reasonable effort has been made by Mike Greer Homes to ensure the information correctly illustrates the dwelling and section, this material may only be used by the Purchaser for illustrative and guidance purposes. Mike Greer Homes accepts no responsibility for any differences, errors or omissions which may become apparent during or on completion of the dwelling.

