

# \$759,000

## Rolleston

Lot 2 Wood Grove Stage 1a, Rolleston



# for sale

dwelling size | section size  
147 m<sup>2</sup> | 400 m<sup>2</sup>

homes  
for  
sale

This stylish three double bedroom home has a spacious open plan design and an easy care section that is fully landscaped and ideal for relaxing and entertaining. All of the bedrooms are well appointed, with a separate family bathroom and ensuite. The home has been finished to a high standard with quality fixtures and fittings throughout. It offers an internal access double garage and has all driveways and fencing included in the sale price.

Wood Grove offers a lifestyle that is hard to beat. There is something here for everyone, of every age and life stage. You and your family will soon discover why Selwyn and Rolleston are Canterbury's, and New Zealand's, fastest growing communities.

Enjoy easy access to educational institutions, green spaces, a great selection of excellent wineries and eateries, plus all the amenities you could need. Wood Grove gives residents an enviable quality of life in a highly desirable location.

### Turn Key

A Turn Key home is an all-inclusive package that only requires 10% deposit.

### more features.


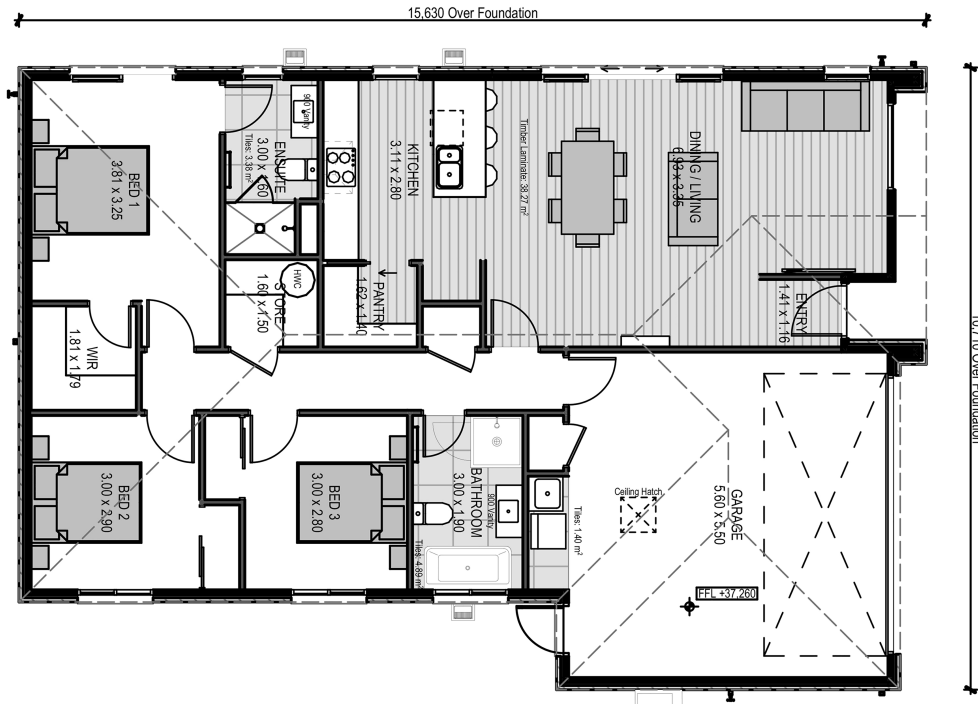
- +
- +
- +
- +
- +
- +
- +
- +

# Wood Grove Lot 2 Wood Grove Stage 1a, Rolleston

dwelling size | section size

147 m<sup>2</sup> | 400 m<sup>2</sup>

3 2 2 1 2

## After Sales Care

At Mike Greer Homes we are committed to making the build journey as stress-free as possible. Our After Sales Care programme addresses any maintenance issues and ensures that any remedial work is undertaken once it is logged and approved.

Disclaimer. While every reasonable effort has been made by Mike Greer Homes to ensure the information correctly illustrates the dwelling and section, this material may only be used by the Purchaser for illustrative and guidance purposes. Mike Greer Homes accepts no responsibility for any differences, errors or omissions which may become apparent during or on completion of the dwelling.

