

\$640,000

 **mikegreer**homes

Kawerau

Lot 5, Central Cove Kawerau District



Artist Impression Only

for sale

dwelling size	section size
136 m ²	510 m ²

**homes
for
sale**

Offering 3 double bedrooms and an open plan living, kitchen and dining area, this home is perfectly designed to maximise space and indoor/outdoor flow. The home features an internal access double garage and a fully landscaped private section perfect for entertaining. Complementing the living and bedroom spaces are the family bathroom with quality fixtures and fittings.

more features.

- ✚ Two Car Garaging
- ✚ After Sales Care Program
- ✚ Designer Kitchen
- ✚ Fully Landscaped
- ✚ LED Lighting
- ✚ 10 Year Registered Master Build Guarantee
- ✚ Open Plan Living



Turn Key

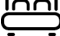


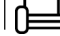

A Turn Key home is an all-inclusive package that only requires 10% deposit.

bringing you **more**

07 281 1560

mikegreerhomes.co.nz

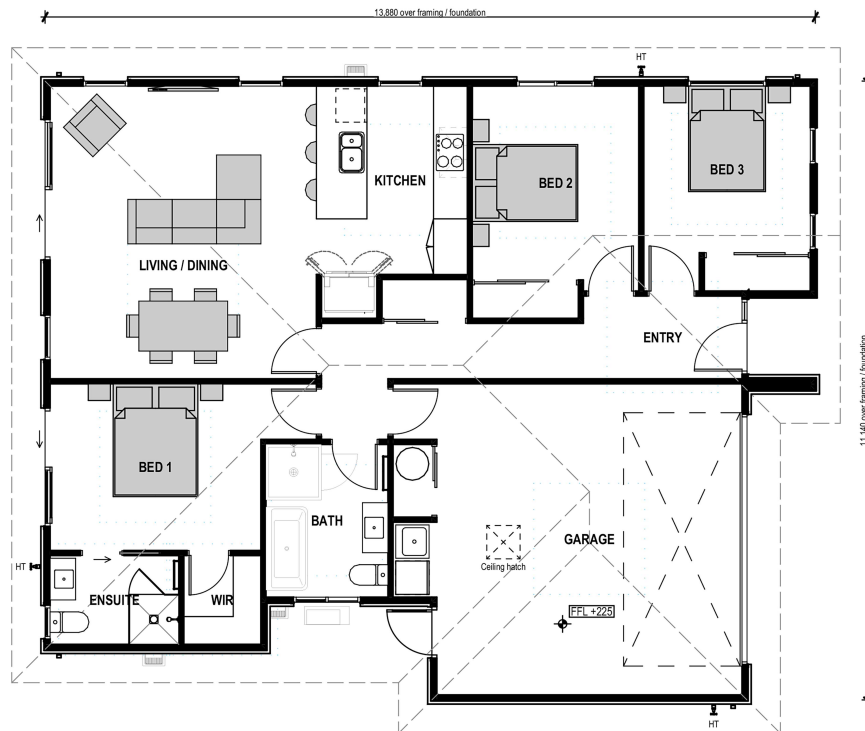
Kawerau Lot 5, Central Cove Kawerau District

dwelling size	section size	3	2	2	1	2
136 m ²	510 m ²					

KiwiSaver
Poua he Oranga



TA0440



After Sales Care

At Mike Greer Homes we are committed to making the build journey as stress-free as possible. Our After Sales Care programme addresses any maintenance issues and ensures that any remedial work is undertaken once it is logged and approved.

Disclaimer. While every reasonable effort has been made by Mike Greer Homes to ensure the information correctly illustrates the dwelling and section, this material may only be used by the Purchaser for illustrative and guidance purposes. Mike Greer Homes accepts no responsibility for any differences, errors or omissions which may become apparent during or on completion of the dwelling.

