

\$998,000

mikegreerhomes

Papamoa

Lot 403 - 34 Monaro Place Golden Sands



for sale

dwelling size	section size
158 m ²	312 m ²

homes
for
sale

This attractive 4 double bedroom, 2 bathroom home has a spacious and practical floor plan that would suit a range of people and lifestyles. A North facing open plan living/dining/kitchen area offers easy access to the outdoor entertaining area within the fully landscaped section. The home also offers an internal access single garage and quality fixtures and fittings throughout, plus it benefits from a good location close to all amenities.

Golden Sands Papamoa is a neighbourhood taking shape. It has matured into a desirable family friendly community with local shops, schools, play grounds and the beach only a short stroll from each other. A town centre and neighbourhood centres are planned for future development, with emphasis on 'walkability' for all upcoming stages.

more features.

- ✚ Close to Local Amenities
- ✚ After Sales Care Program
- ✚ Ensuite
- ✚ 10 Year Registered Master Build Guarantee
- ✚ Open Plan Living
- ✚ Single Car Garaging



A Turn Key home is an all-inclusive package that only requires 10% deposit.

bringing you **more**






07 281 1560

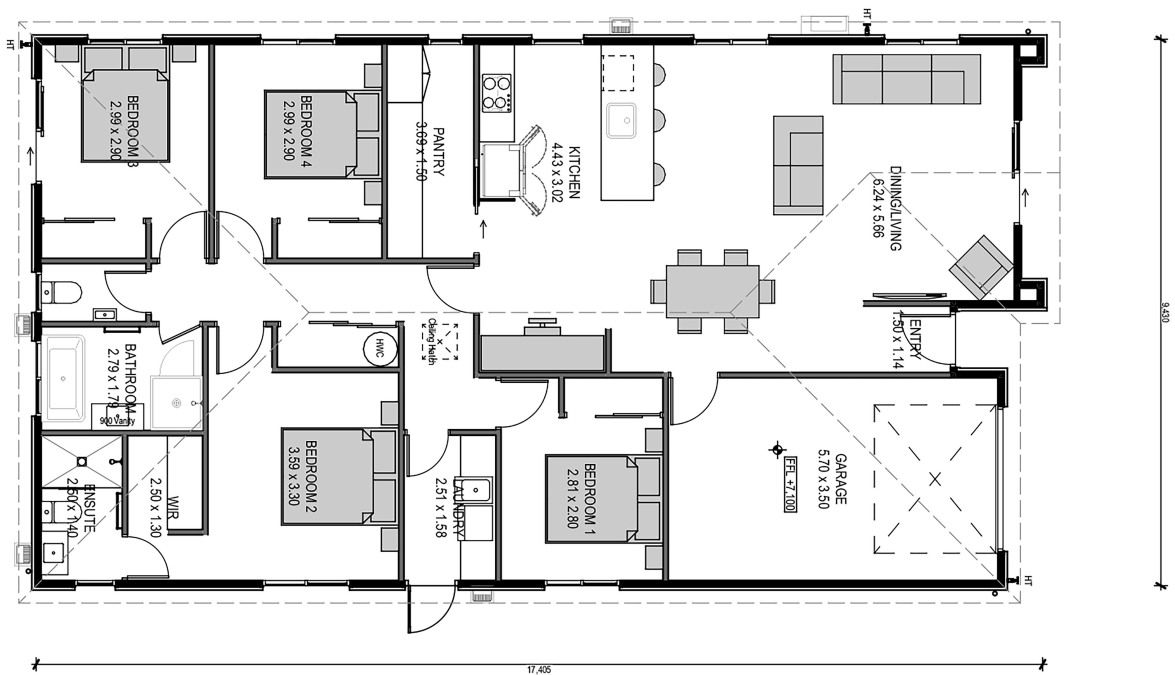
mikegreerhomes.co.nz

Golden Sands Lot 403 - 34 Monaro Place Golden Sands

TA0434



dwelling size	section size	4	2	2	1	1
158 m ²	312 m ²					



After Sales Care

At Mike Greer Homes we are committed to making the build journey as stress-free as possible. Our After Sales Care programme addresses any maintenance issues and ensures that any remedial work is undertaken once it is logged and approved.

Disclaimer. While every reasonable effort has been made by Mike Greer Homes to ensure the information correctly illustrates the dwelling and section, this material may only be used by the Purchaser for illustrative and guidance purposes. Mike Greer Homes accepts no responsibility for any differences, errors or omissions which may become apparent during or on completion of the dwelling.

