

\$729,000

 **mikegreer**homes

Riccarton

Townhouse 19, 5-9 Ayr Street, Christchurch



for sale

dwelling size
78 m²

homes
for
sale

This three storey homes features an open plan kitchen, dining and living area and laundry on the ground floor, a bedroom, bathroom and balcony on the middle floor and a bedroom and ensuite on the top floor.

Situated just metres away from the heart of Christchurch's Hagley Park and only minutes from Westfield Riccarton, Merivale Mall, Victoria Street and the City Centre, this is an outstanding location! Zoning for Ilam School, Christchurch Girls' and Christchurch Boy's High School creates exceptional value for your investment. Positioned in the perfect area ensures a convenient lifestyle for years to come. The opportunity to live metres away from Hagley Park doesn't come up often, so now is the perfect time to live the best of both worlds - the convenience of the city, with acres of greenery on your doorstep.

more features.

- ✚ Fully Landscaped
- ✚ Complies with the Healthy Homes Standard
- ✚ 10 Year Registered Master Build Guarantee
- ✚ Open Plan Living
- ✚ Smeg Appliances
- ✚ Window Coverings Included



A Turn Key home is an all-inclusive package that only requires 10% deposit.

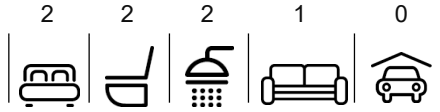
bringing you **more**

mikegreerhomes.co.nz

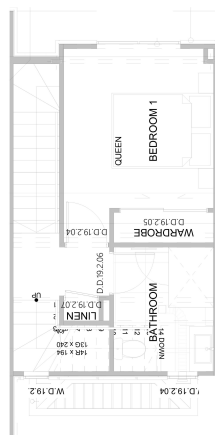
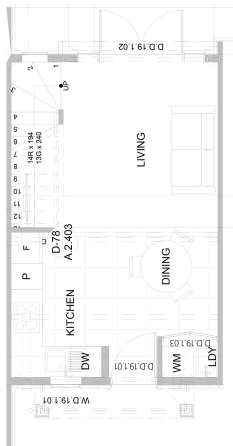
Ayr Street Townhouse 19, 5-9 Ayr Street, Christchurch

dwelling size

78 m²



VC1337c



After Sales Care

At Mike Greer Homes we are committed to making the build journey as stress-free as possible. Our After Sales Care programme addresses any maintenance issues and ensures that any remedial work is undertaken once it is logged and approved.

Disclaimer. While every reasonable effort has been made by Mike Greer Homes to ensure the information correctly illustrates the dwelling and section, this material may only be used by the Purchaser for illustrative and guidance purposes. Mike Greer Homes accepts no responsibility for any differences, errors or omissions which may become apparent during or on completion of the dwelling.

