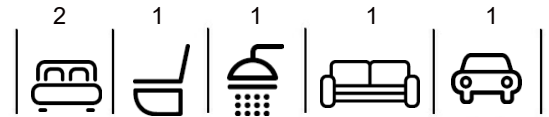


# \$569,000

# mikegreerhomes

## Papanui

Townhouse 15, 15/27 Harewood Rd, Christchurch



# for sale

dwelling size

68 m<sup>2</sup>

homes  
for  
sale

This two storey home comes with a carpark and features an open plan kitchen, dining and living area that connects to the outdoor space plus a separate laundry on the ground floor and two bedrooms and a bathroom on the first floor.

Harewood Road is situated right in the centre of Papanui. A high growth, prestigious suburb serviced by a range of great schooling options, shopping, employment opportunities, easy access to public transfer hubs and only a 10 minute drive to the Christchurch CBD and the Airport. These parkside properties have a secluded feel, only minutes from two of Christchurch's favourite shopping centres.

### more features.

- +
- +
- +
- +
- +
- +

### Turn Key

A Turn Key home is an all-inclusive package that only requires 10% deposit.


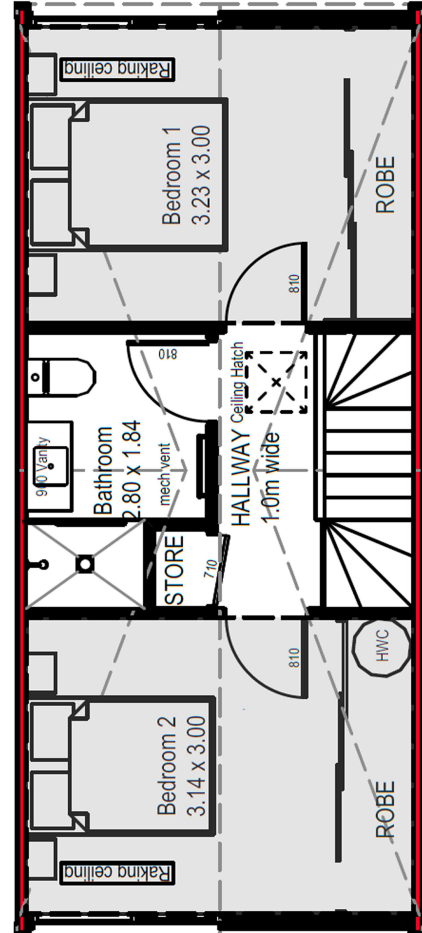
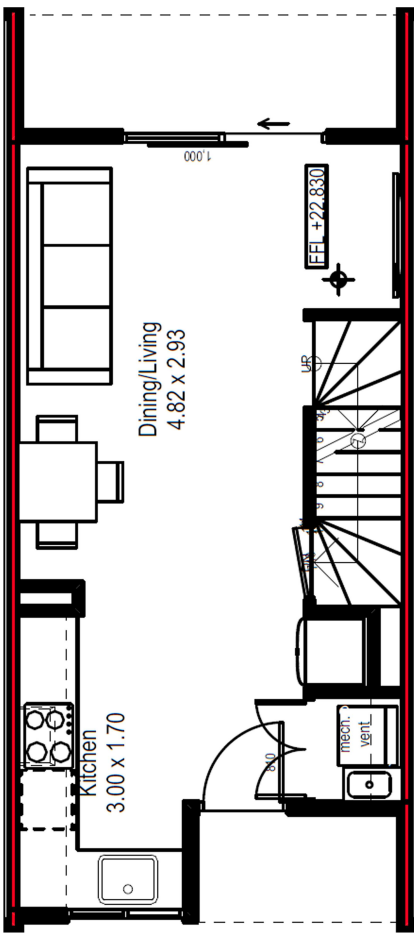
bringing you more

mikegreerhomes.co.nz

# Harewood Road Townhouse 15, 15/27 Harewood Rd, Christchurch

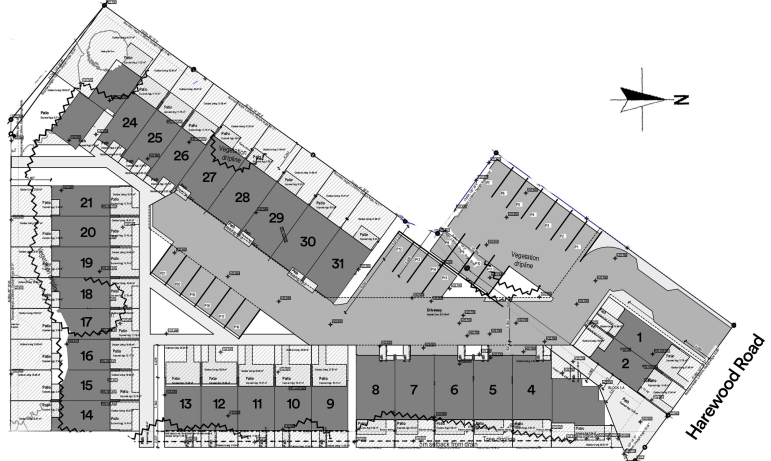
dwelling size | 68 m<sup>2</sup> |

2 1 1 1 1

### After Sales Care

At Mike Greer Homes we are committed to making the build journey as stress-free as possible. Our After Sales Care programme addresses any maintenance issues and ensures that any remedial work is undertaken once it is logged and approved.



Disclaimer. While every reasonable effort has been made by Mike Greer Homes to ensure the information correctly illustrates the dwelling and section, this material may only be used by the Purchaser for illustrative and guidance purposes. Mike Greer Homes accepts no responsibility for any differences, errors or omissions which may become apparent during or on completion of the dwelling.