

\$765,000

 **mikegreer**homes

Rolleston

Lot 46 East Maddisons Road - 32 Monarch Drive



Artist Impression Only

for sale

dwelling size	section size
143 m ²	400 m ²

**homes
for
sale**

Perfect for families and entertaining, this home is designed to maximise space and sun. The open plan living, dining and kitchen area is the centre of the home, and offers a great outlook onto the easy care section. With three double bedrooms, a family bathroom and ensuite, the house combines great functionality with a stylish feel. The home has an internal access double garage, and the section is fully landscaped with all fencing and driveways included.

Situated at 617 East Maddisons Road, this new development in Rolleston offers the advantage of being within walking distance of parks, sports facilities, and cafes. Residents can enjoy a wealth of amenities in close proximity. For those looking to explore beyond the neighborhood, Christchurch's CBD is just a thirty-minute drive away via the Southern Motorway.

more features.

- ✚ Designer Kitchen
- ✚ Ensuite
- ✚ Fully Landscaped
- ✚ 10 Year Registered Master Build Guarantee
- ✚ Open Plan Living
- ✚ Tiled Floors to Wet Areas
- ✚ Walk-in Wardrobe



Turn Key





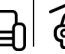
A Turn Key home is an all-inclusive package that only requires 10% deposit.

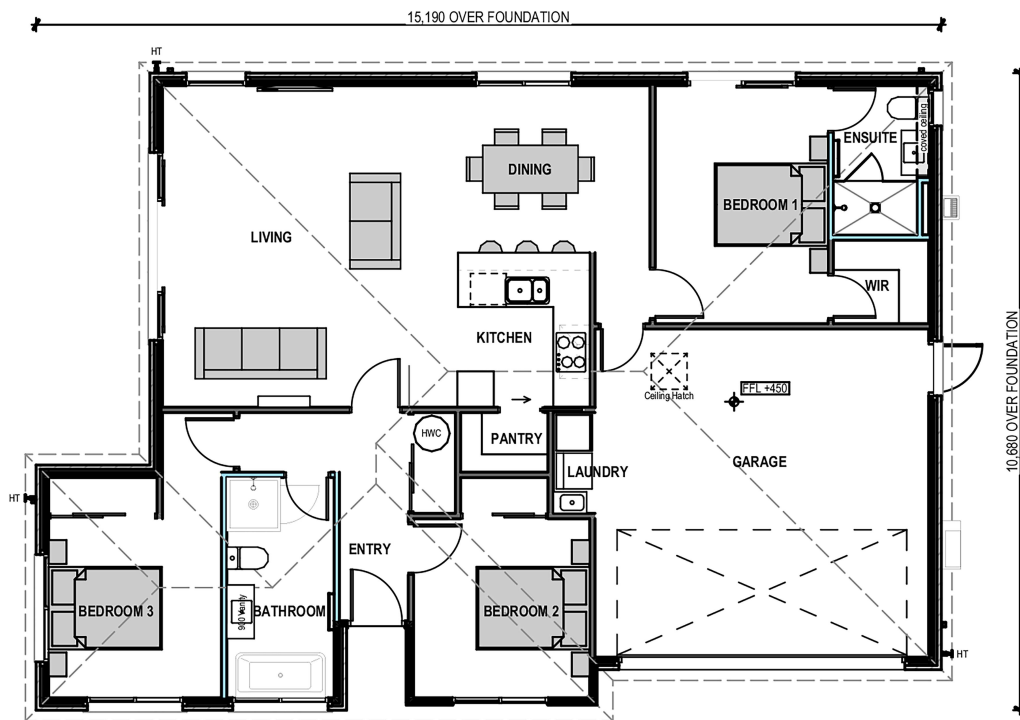
bringing you **more**

03 354 0166

mikegreerhomes.co.nz

East Maddisons Road Lot 46 East Maddisons Road - 32 Monarch Drive

dwelling size	section size	3	2	2	1	2
143 m ²	400 m ²					


SL1004


After Sales Care

At Mike Greer Homes we are committed to making the build journey as stress-free as possible. Our After Sales Care programme addresses any maintenance issues and ensures that any remedial work is undertaken once it is logged and approved.

Disclaimer. While every reasonable effort has been made by Mike Greer Homes to ensure the information correctly illustrates the dwelling and section, this material may only be used by the Purchaser for illustrative and guidance purposes. Mike Greer Homes accepts no responsibility for any differences, errors or omissions which may become apparent during or on completion of the dwelling.

