

\$750,070

mikegreerhomes

Darfield

Lot 67 Torlesse Estate, Darfield



for sale

dwelling size | section size
167 m² | 651 m²

homes
for
sale

Perfect for families and entertaining, this home is designed to maximise space and sun. The open plan living, dining and kitchen area forms the centre of the home, offering a great outlook onto the large outdoor space. This home is well-appointed with four double bedrooms, a family bathroom, ensuite, and plenty of storage throughout. With the driveway and boundary fencing included in the price, this home and land package has everything you need.

Torlesse Estate boasts Northwest views into the Torlesse Range and beyond and is only a short distance to the Darfield Village and all of its amenities. With it's charming country feel, value for money, and close proximity to Rolleston and Chrsitchurch City, Darfield is quickly becoming a desirable place to live.

more features.

- + Two Car Garaging
- + Designer Kitchen
- + Digital Key Entry
- + Godfrey Hirst Flooring
- + Landscaping Package Available
- + Tiled Floors to Wet Areas
- + Walk-in Wardrobe








A Turn Key home is an all-inclusive package that only requires 10% deposit.

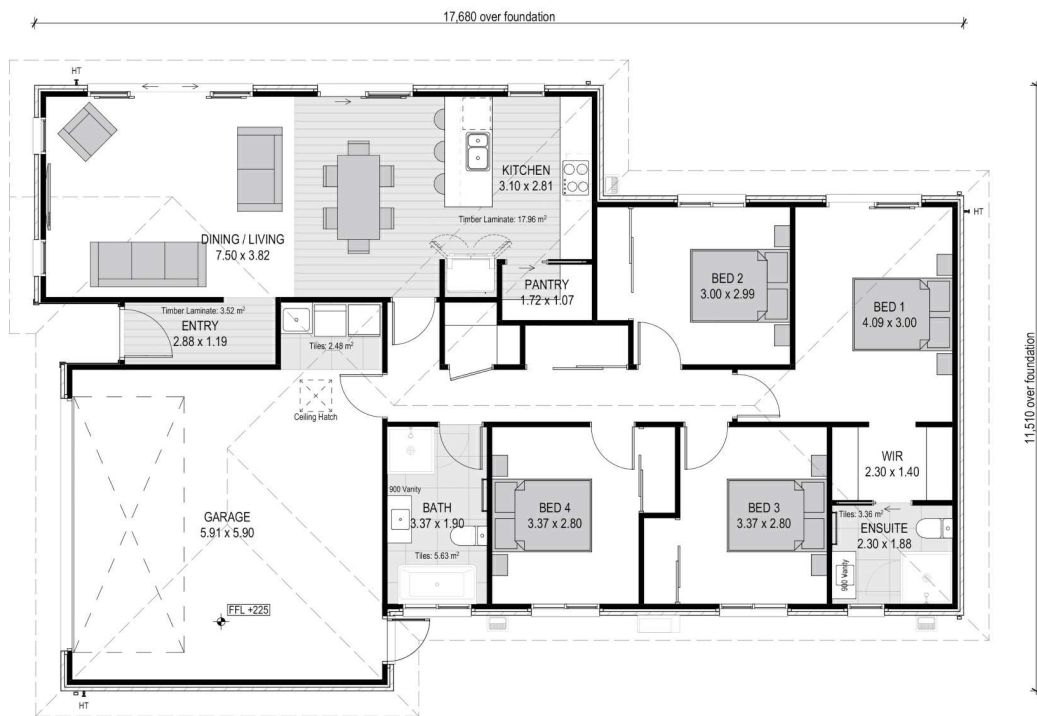
bringing you **more**

03 354 0166

mikegreerhomes.co.nz

Torlesse Estate Lot 67 Torlesse Estate, Darfield

dwelling size	section size	4	2	2	1	2
167 m ²	651 m ²					



After Sales Care

At Mike Greer Homes we are committed to making the build journey as stress-free as possible. Our After Sales Care programme addresses any maintenance issues and ensures that any remedial work is undertaken once it is logged and approved.

Disclaimer. While every reasonable effort has been made by Mike Greer Homes to ensure the information correctly illustrates the dwelling and section, this material may only be used by the Purchaser for illustrative and guidance purposes. Mike Greer Homes accepts no responsibility for any differences, errors or omissions which may become apparent during or on completion of the dwelling.

