

\$689,000

mikegreerhomes

Rolleston

House 5 Falcon's Landing Raptor



for sale

dwelling size | section size
121 m² | 392 m²

homes
for
sale

This three bedroom home is perfect for couples, retirees and investors. Perfectly designed for the site, the home features an open plan living and kitchen area that connects well to the outdoor space. The main bathroom is well appointed with both a shower and bath, quality fixtures and fittings throughout, and a great location close to schools and amenities, this home really presents good value for money.

Falcon's Landing is a fast-growing subdivision situated in the popular Rolleston area of Christchurch. With around 600 residentially zoned sections ranging from 450-1000sqm, Falcon's Landing offers prime sites and outlooks to suit a range of lifestyles. One of the key advantages of Falcon's Landing is its convenient proximity to schools, parks, and local amenities. Residents can enjoy easy access to educational institutions, green spaces, and essential amenities, enhancing the overall convenience and quality of life in this highly desirable location.

more features.

- +
- +
- +
- +
- +
- +
- +

Turn Key

A Turn Key home is an all-inclusive package that only requires 10% deposit.

bringing you more

03 354 0166

mikegreerhomes.co.nz

Falcon's Landing House 5 Falcon's Landing Raptor

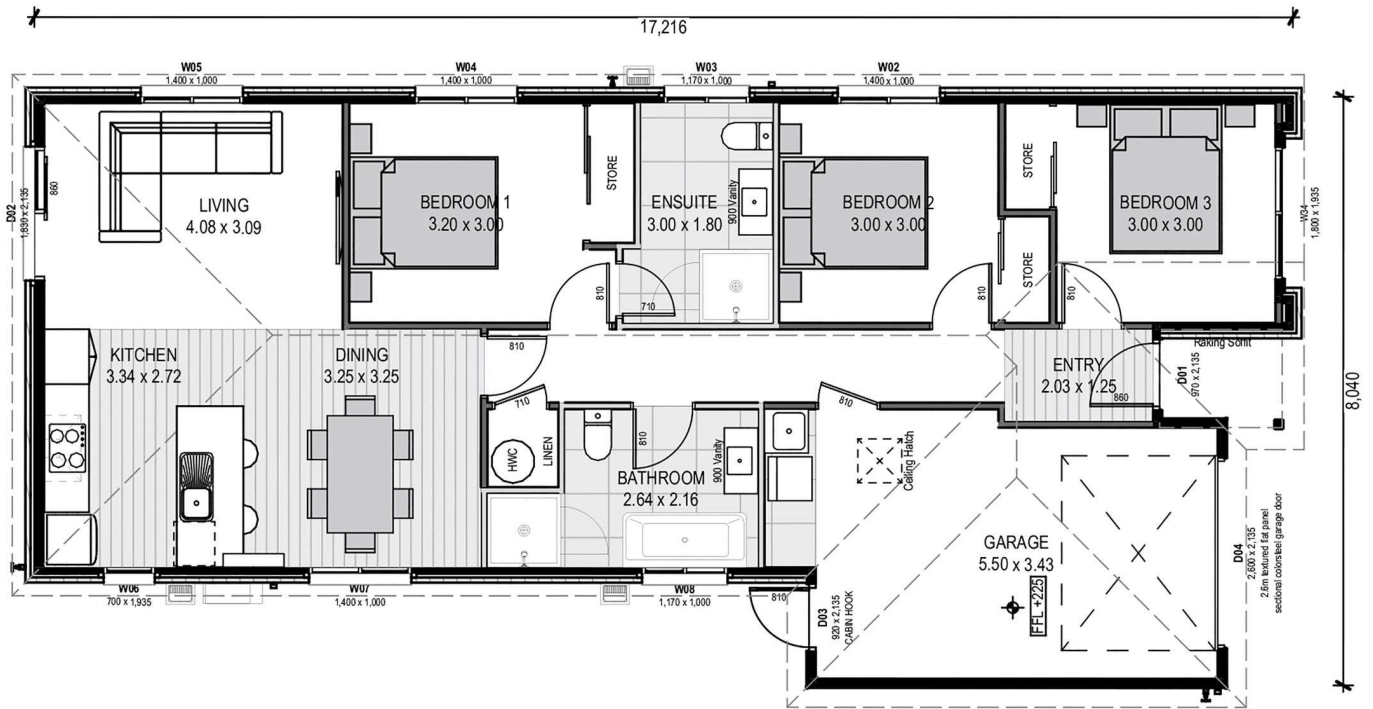
dwelling size | section size

121 m² | 392 m²

3 2 2 1 1



SL1096



After Sales Care

At Mike Greer Homes we are committed to making the build journey as stress-free as possible. Our After Sales Care programme addresses any maintenance issues and ensures that any remedial work is undertaken once it is logged and approved.

Disclaimer. While every reasonable effort has been made by Mike Greer Homes to ensure the information correctly illustrates the dwelling and section, this material may only be used by the Purchaser for illustrative and guidance purposes. Mike Greer Homes accepts no responsibility for any differences, errors or omissions which may become apparent during or on completion of the dwelling.

