

\$999,000

 **mikegreerhomes**

Clyde

Lot 36 Sunderland Park, Clyde



for sale

dwelling size	section size
161 m ²	437 m ²

**homes
for
sale**

This 4 double bedroom home has been designed to maximise space and sun. The well-appointed family bathroom and ensuite, lounge and kitchen areas all feature quality fixtures and fittings that complement the home throughout.

Sitting North West of the Clutha river is the small and perfectly preserved goldmining town of Clyde. Clyde is perfect for those who love the feel and the views of Central Otago but want to reside in a smaller town with a relaxed pace. Sunderland Park is located in the heart of Clyde's township and offers those iconic Central Otago mountain views with the Clutha River just down the road.

Offering world class cycling trails and vineyards in every direction, Clyde is a great place to enjoy an easy lifestyle in a scenic setting that's rich in history.

more features.

- ✚ Two Car Garaging
- ✚ Personal Colour Consultation
- ✚ Designer Kitchen
- ✚ Ensuite
- ✚ Fairview Architectural Suite Windows



A Turn Key home is an all-inclusive package that only requires 10% deposit.






bringing you **more**

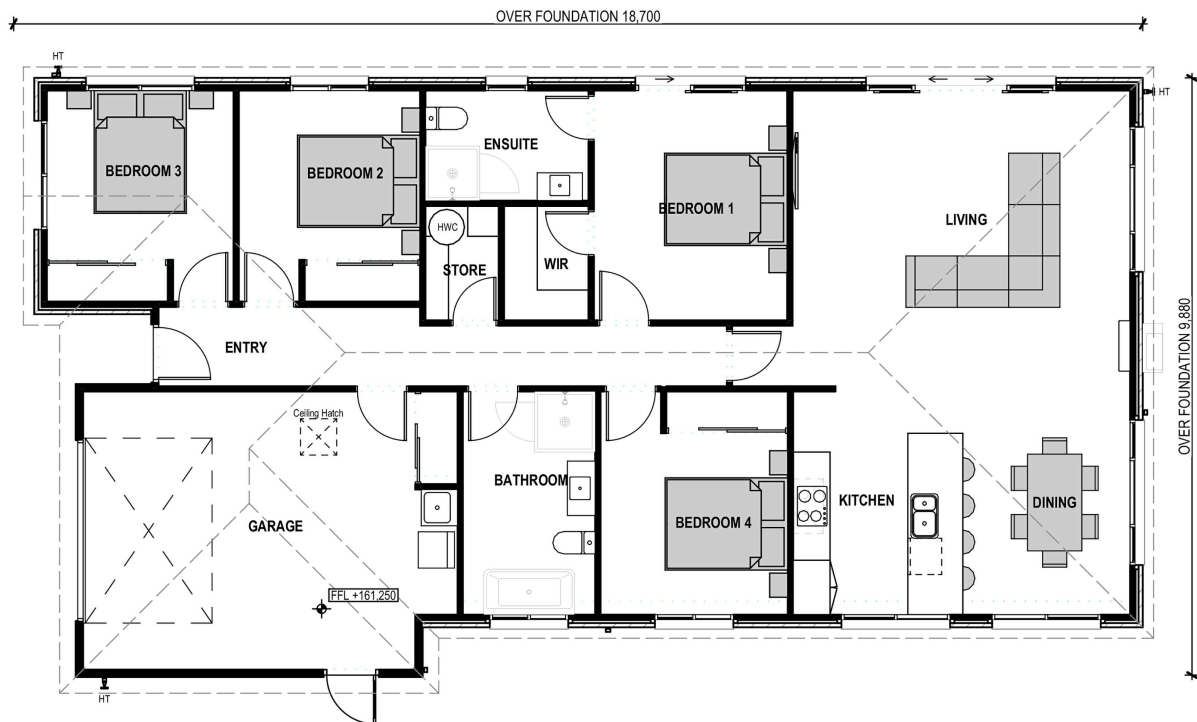
03 443 2065

mikegreerhomes.co.nz

Sunderland Park Lot 36 Sunderland Park, Clyde

CO0950


dwelling size	section size	4	2	2	1	1
161 m ²	437 m ²					



After Sales Care

At Mike Greer Homes we are committed to making the build journey as stress-free as possible. Our After Sales Care programme addresses any maintenance issues and ensures that any remedial work is undertaken once it is logged and approved.

Disclaimer. While every reasonable effort has been made by Mike Greer Homes to ensure the information correctly illustrates the dwelling and section, this material may only be used by the Purchaser for illustrative and guidance purposes. Mike Greer Homes accepts no responsibility for any differences, errors or omissions which may become apparent during or on completion of the dwelling.

