

\$719,000

 **mikegreerhomes**

Highsted

Townhouse 18, Malaga Crescent, Christchurch



for sale

dwelling size
70 m²

**homes
for
sale**

This three storey home comes with a carpark and features an open plan kitchen, dining and living area that connects to the outdoor space plus a separate laundry on the ground floor, a bedroom and a bathroom on the first floor and a bedroom and an ensuite on the second floor.

Malaga Crescent is located in the high value leafy suburb of Highsted. Bordering Tulett Park, these homes have unrestricted access to nature and recreation. Highsted is the ideal place to live for those who love the outdoors, with a multitude of parks, cycleways, reserves, and walkways conveniently on your doorstep. Executive living close to schooling, supermarkets and still only 15 minutes to the Christchurch CBD.

more features.

- ✚ Fully Landscaped
- ✚ Complies with the Healthy Homes Standard
- ✚ 10 Year Registered Master Build Guarantee
- ✚ Off-Street Carpark
- ✚ Smeg Appliances
- ✚ Undertile Heating in Bathroom and Ensuite
- ✚ Window Coverings Included



A Turn Key home is an all-inclusive package that only requires 10% deposit.

bringing you **more**

mikegreerhomes.co.nz

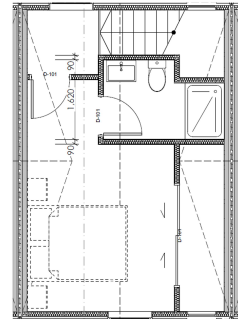
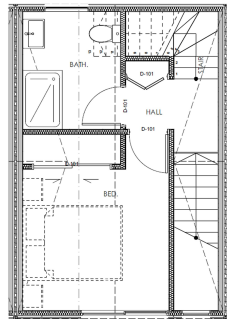
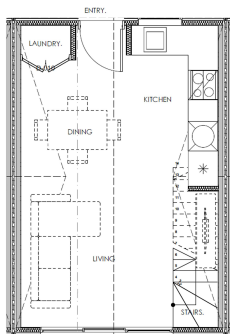
Malaga Crescent Townhouse 18, Malaga Crescent, Christchurch

dwelling size

70 m²



VC1297e



After Sales Care

At Mike Greer Homes we are committed to making the build journey as stress-free as possible. Our After Sales Care programme addresses any maintenance issues and ensures that any remedial work is undertaken once it is logged and approved.

Disclaimer. While every reasonable effort has been made by Mike Greer Homes to ensure the information correctly illustrates the dwelling and section, this material may only be used by the Purchaser for illustrative and guidance purposes. Mike Greer Homes accepts no responsibility for any differences, errors or omissions which may become apparent during or on completion of the dwelling.

