

# \$889,000

# mikegreerhomes

## Ohauti

219 Adler Dr, Three Creeks Estate



# for sale

dwelling size	section size
150 m <sup>2</sup>	399 m <sup>2</sup>

homes  
for  
sale

Offering three double bedrooms and an open plan living, kitchen and dining area, this home is perfectly designed to maximise space and indoor/outdoor flow. The home features an internal access double garage and a private section perfect for entertaining. Complementing the living and bedroom spaces are the family bathroom and ensuite that are both well-appointed with quality fixtures and fittings. Landscaping included.

This is a completed home ready to move in!

Three Creeks is already well-established, with quiet walkways and public spaces for children to play, and homes designed for entertaining and taking in the views. It is truly rare to find a residential development that provides such a peaceful setting amongst native flora and fauna, yet is just minutes away from the city centre.



A Turn Key home is an all-inclusive package that only requires 10% deposit.

### more features.

- ✚ Two Car Garaging
- ✚ After Sales Care Program
- ✚ Fully Landscaped
- ✚ 10 Year Registered Master Build Guarantee
- ✚ Move In Now

bringing you more






07 281 1560

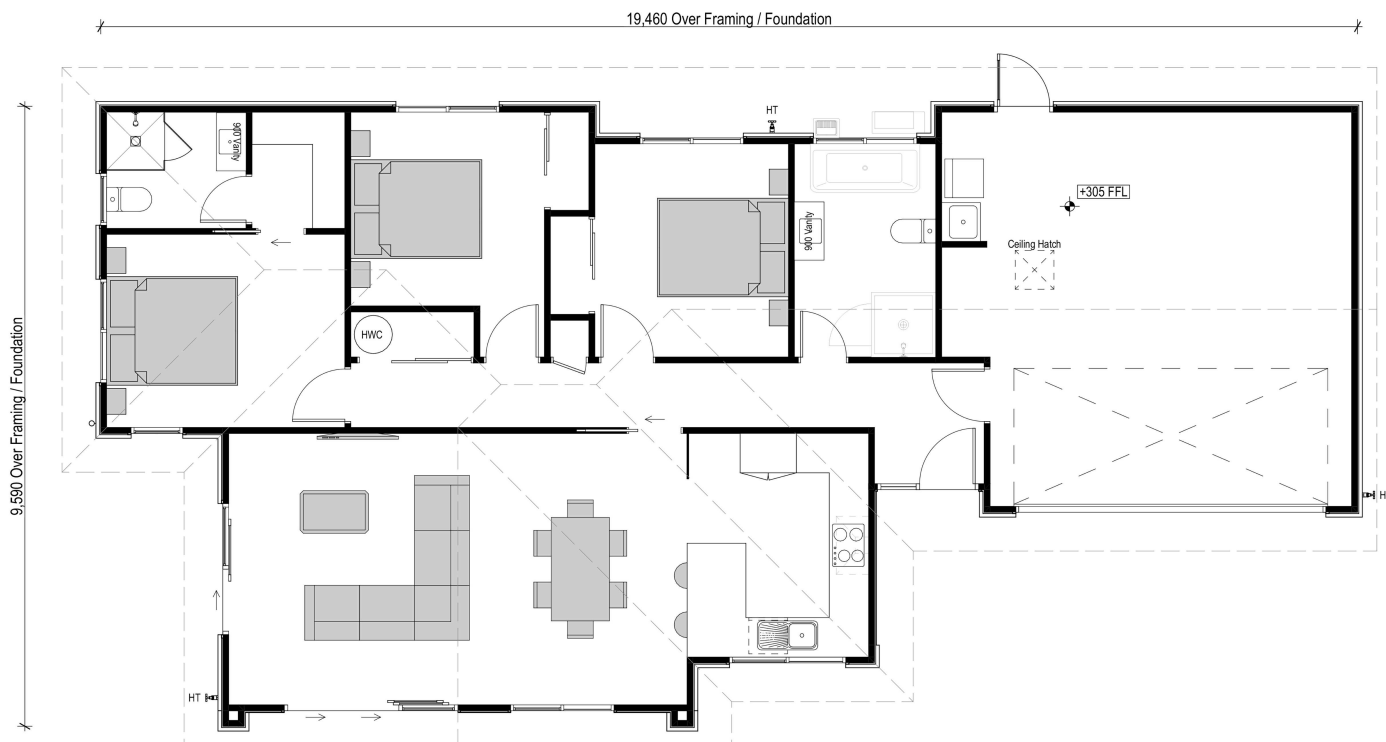
mikegreerhomes.co.nz

# Three Creeks Estate 219 Adler Dr, Three Creeks Estate

TA0396



dwelling size	section size	3	2	2	1	2
150 m <sup>2</sup>	399 m <sup>2</sup>					



## After Sales Care

At Mike Greer Homes we are committed to making the build journey as stress-free as possible. Our After Sales Care programme addresses any maintenance issues and ensures that any remedial work is undertaken once it is logged and approved.

Disclaimer. While every reasonable effort has been made by Mike Greer Homes to ensure the information correctly illustrates the dwelling and section, this material may only be used by the Purchaser for illustrative and guidance purposes. Mike Greer Homes accepts no responsibility for any differences, errors or omissions which may become apparent during or on completion of the dwelling.

