

\$987,000

mikegreerhomes

Richmond

Lot 28 Pukerua, Richmond



Artist Impression Only

for sale

dwelling size | section size
161 m² | 547 m²

homes
for
sale

8 Ara o Kahuroa three bedroom home is perfect for families. Perfectly designed for the site, the home features an open plan living and kitchen area that connects well to the outdoor space. With a quiet bedroom wing, plenty of storage, and quality fixtures and fittings throughout, this home presents great value for money.

The new Pukerua subdivision near the Richmond Hills seamlessly connects outdoor living with the conveniences of urban life. Boasting proximity to scenic walking tracks and a growing shopping precinct, residents will relish in the ease of accessing everyday essentials whilst indulging in all that the great outdoor Tasman Region has to offer. Situated within arms reach of schools, daycare facilities, and nestled in a rapidly growing area, Pukerua offers the epitome of modern convenience.

more features.

- +
- +
- +
- +
- +
- +



Turn Key






A Turn Key home is an all-inclusive package that only requires 10% deposit.

bringing you more

03 544 7873

mikegreerhomes.co.nz

Pukerua Lot 28 Pukerua, Richmond

| | | | | | | |
|--------------------|--------------------|---|---|---|---|---|
| dwelling size | section size | 3 | 2 | 2 | 1 | 2 |
| 161 m ² | 547 m ² |  |  |  |  |  |

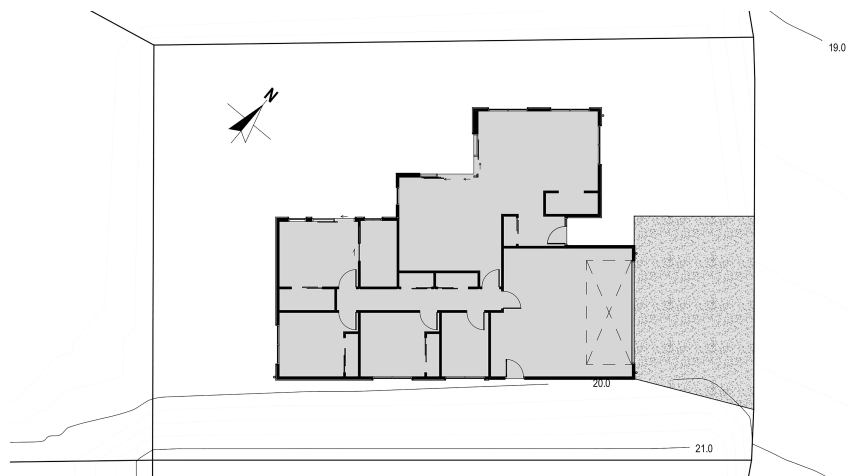


NL0632



After Sales Care

At Mike Greer Homes we are committed to making the build journey as stress-free as possible. Our After Sales Care programme addresses any maintenance issues and ensures that any remedial work is undertaken once it is logged and approved.



Disclaimer. While every reasonable effort has been made by Mike Greer Homes to ensure the information correctly illustrates the dwelling and section, this material may only be used by the Purchaser for illustrative and guidance purposes. Mike Greer Homes accepts no responsibility for any differences, errors or omissions which may become apparent during or on completion of the dwelling.