

\$685,000

West Melton

Lot 77e Te Whaiawa - 19 Kakaruai Crescent



Artist Impression Only

for sale

dwelling size | section size
120 m² | 266 m²

**homes
for
sale**

Thoughtfully designed to maximise both space and sunlight, this beautifully appointed home offers the perfect blend of style, comfort, and functionality. At its heart lies a spacious open-plan kitchen, dining, and living area perfect for everyday family living or hosting guests with seamless flow to the low-maintenance, landscaped section.

Discover the perfect blend of lifestyle and convenience at Te Whaiawa in West Melton. This up-and-coming subdivision offers a welcoming community atmosphere, with a range of section sizes to suit different family needs. Enjoy the tranquility of semi-rural surroundings while being just a short drive from local shops, schools, and amenities, and approximately 25 minutes from Christchurch city. Te Whaiawa presents an exciting opportunity to secure a future home in a growing, vibrant community.






more features.

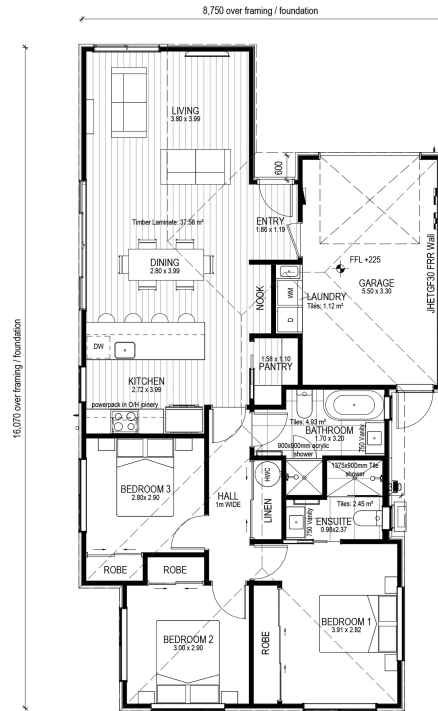
- ✦ Digital Key Entry
- ✦ Ensuite
- ✦ Fully Landscaped
- ✦ Samsung Appliances
- ✦ Stone Benchtop
- ✦ Walk-in Pantry



A Turn Key home is an all-inclusive package that only requires 10% deposit.

Te Whaiawa Lot 77e Te Whaiawa - 19 Kakarui Crescent

dwelling size	section size	3	2	2	1	1
120 m ²	266 m ²					



After Sales Care

At Mike Greer Homes we are committed to making the build journey as stress-free as possible. Our After Sales Care programme addresses any maintenance issues and ensures that any remedial work is undertaken once it is logged and approved.

Disclaimer. While every reasonable effort has been made by Mike Greer Homes to ensure the information correctly illustrates the dwelling and section, this material may only be used by the Purchaser for illustrative and guidance purposes. Mike Greer Homes accepts no responsibility for any differences, errors or omissions which may become apparent during or on completion of the dwelling.

