

# Flight Backless Bench

## Bench Specifications

- Fully Welded Construction
- AAMA 2604 Powder Coat
- Powder Coated Inside and Out

### How to Specify this Product

Include Bench Length, Width and Height.  
Specify Product Variations, Installation,  
Pattern Options, Color and Material.

### Sizes - Bench

- FLT2-1
- FLT2-2  
83"L x 18"W x 18"H  
L2100mm x W450mm x H460mm
- FLT2-3
- FLT2-4  
110"L x 18"W x 18"H  
L2800mm x W450mm x H460mm

### Pattern Options

- Custom patterns available

### Warranty and Care

See Warranty and Care Document for further information on specific details.

- 2 Year Finish Warranty
- 10 Year Structural Warranty

## Green Theory™

### G-T

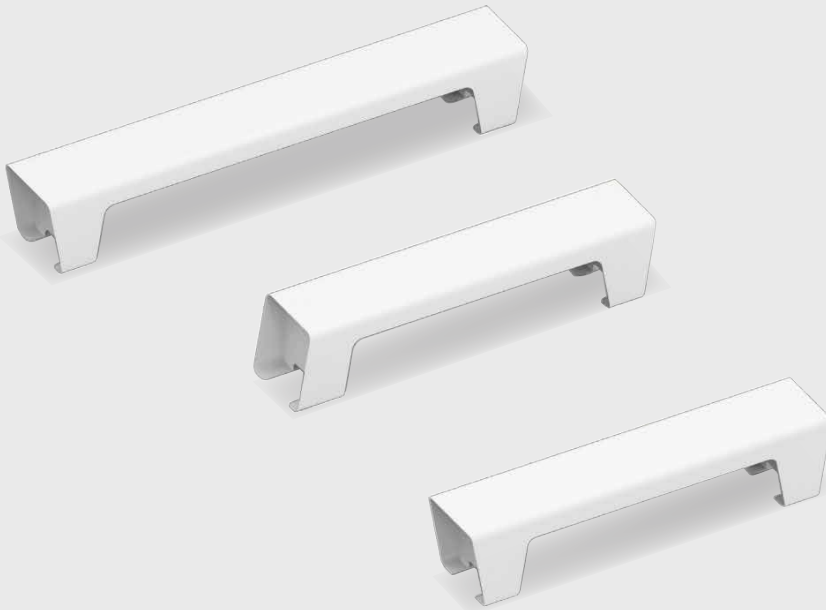
[greentheory.com](https://greentheory.com)

Date: 02 13 2023  
Specification Sheet Version 1.0A

Units measured in imperial inches and metric millimetres.

Green Theory reserves the right to revise technical specifications at any time without prior notice. Correct mounting hardware and the method of mounting of the product are imperative to user safety. Use installation instructions to correctly position and install product.  
©2022 Green Theory Design

Designed by  STREET + GARDEN



# Flight Backless Bench

**Product Code - FLT2-1**

4 Seater, Double Taper

Weight:

- 88lbs (40kg) - 5052 Aluminum
- 116lbs (53kg) - 304 Stainless Steel

## Bench Variations

### Body Length Variations

- 83" / 2100mm (4 Seater)
- 110" / 2800mm (6 Seater)

### Body Profile Variations

- Tapered
- Paralled Right

### Materials

Made with Powder Coated 5052 Aluminum or 304 Stainless Steel

- 5052 Aluminum
- 304 Stainless Steel

### Standard Powder Coat

- Matte Black
- Pewter
- Gloss White
- Metallic Silver
- Smokey Beige
- Suede Bronze

### Custom Powder Coat

RAL \_\_\_\_\_

# Green Theory™

## G-T

greentheory.com

Date: 02 13 2023  
Specification Sheet Version 1.0A

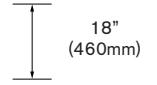
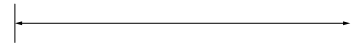
Units measured in imperial inches and metric millimetres.

Green Theory reserves the right to revise technical specifications at any time without prior notice. Correct mounting hardware and the method of mounting of the product are imperative to user safety. Use installation instructions to correctly position and install product.  
©2022 Green Theory Design

Designed by  STREET + GARDEN

18" (450mm)

83" (2100mm)



**Product Code - FLT2-2**

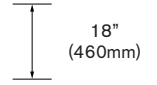
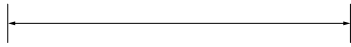
4 Seater, Taper Right/Left

Weight:

- 88lbs (40kg) - 5052 Aluminum
- 116lbs (53kg) - 304 Stainless Steel

18" (450mm)

83" (2100mm)



**Product Code - FLT2-3**

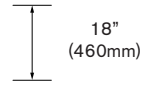
6 Seater, Double Taper

Weight:

- 106lbs (48kg) - 5052 Aluminum
- 139lbs (63kg) - 304 Stainless Steel

18" (450mm)

110" (2800mm)



**Product Code - FLT2-4**

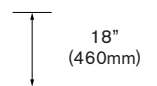
6 Seater, Taper Right/Left

Weight:

- 106lbs (48kg) - 5052 Aluminum
- 139lbs (63kg) - 304 Stainless Steel

18" (450mm)

110" (2800mm)



# Flight Backless Bench

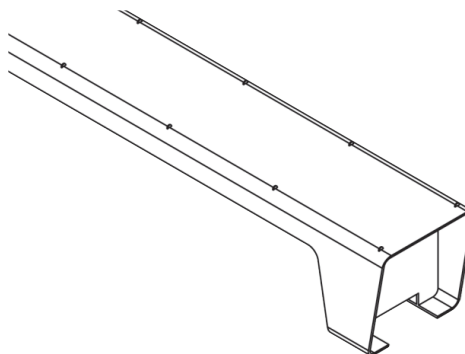
## Skate Stop Accessory - FLT1-\_-\_-S

Flight Backless Skate Stop detail

## Bench Accessories

### Accessories

- Skatestop



# Green Theory™

G-T

[greentheory.com](http://greentheory.com)

Date: 02 13 2023  
Specification Sheet Version 1.0A

Units measured in imperial inches and  
metric millimetres.

Green Theory reserves the right to revise technical specifications at any time without prior notice. Correct mounting hardware and the method of mounting of the product are imperative to user safety. Use installation instructions to correctly position and install product.  
©2022 Green Theory Design

Designed by  STREET + GARDEN

# Flight Backless Bench

## Delivery Loading & Unloading Detail

Recommended on site Delivery Detail

## Bench Specifications

### Delivery Loading & Unloading Detail

- Product is supplied loose and freestanding, or strapped to Pallets or Skids if required
- Product is secured with appropriate padding for protection during transit
- Product can be unloaded manually (Recommend 2 person lifting per product)
- All handling suggestions are to be used as a guide only. It is the full responsibility of the installing party to ensure the appropriate lifting methods are practised

### Installation Detail

- Use product to mark and drill fixing locations in concrete slab/footing
- Install product using masonry or chemical anchors (supplied by others)
- Secure product to anchors using security fixings (supplied by others)
- 4/8 x 3/8" or (M10) masonry anchors with Security nuts (supplied by others)

**Forklift or Crane required to move and lift product into place.**

### Notes

---

---

### Quantity

---

# Green Theory™

## G-T

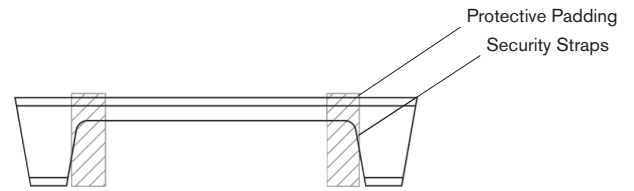
[greentheory.com](http://greentheory.com)

Date: 02 13 2023  
Specification Sheet Version 1.0A

Units measured in imperial inches and metric millimetres.

Green Theory reserves the right to revise technical specifications at any time without prior notice. Correct mounting hardware and the method of mounting of the product are imperative to user safety. Use installation instructions to correctly position and install product.  
©2022 Green Theory Design

Designed by  STREET + GARDEN



### Installation Detail

Recommended on site Installation Detail

