



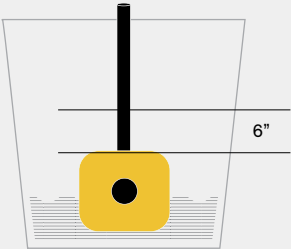

OLLIE

Plant Sipper Tank

LINKABLE

Ollie Plant Sippers are an excellent solution for watering interior and exterior landscaping projects. Unlike dripper irrigation systems, they use the process of capillary action to feed the plant where it needs water the most — at its roots.

INSTALLATION

 <p>1. Choose the appropriate Ollie Plant Sipper (OPS) for your container.</p>	 <p>2. Install a drainage layer or soil layer in the container. Ensure this is level.</p>
 <p>3. Position the OPS tank within the container ensuring the capillary leg top is a maximum of 6 inches from the lowest roots of the plant(s). If necessary, adjust the base soil layer to achieve the correct tank position.</p>	 <p>4. Fill the capillary leg with loose (not compacted) topsoil. Make sure the filler pipe is accessible and the top is flush with the finished soil level. If necessary, the filler pipe can be cut to the required height.</p>

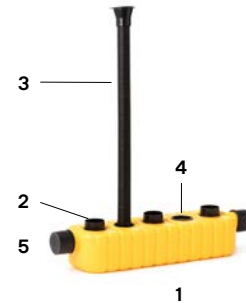
OLLIE (OPS) Spec Sheet

Plant Sipper Tank

Linkable

L25, L21, L36

CONTENTS



- 1 OPS unit
- 2 Capillary Leg
- 3 Filler Pipe and Water Level Assembly
- 4 Air Cap
- 5 Rubber End Stops

SIZE / CAPACITY

L25

24 7/8" x 5 1/8" x 2 1/2" - 13 1/8" filler pipe
Holds 3.3L of water
Suitable for 8L - 30L planters

L21

21 3/4" x 6" x 4" - 23 1/4" filler pipe
Holds 7L of water
Suitable for 20L - 60L planters

L36

35 1/2" x 7 7/8" x 6" - 23 1/4" filler pipe
Holds 24L of water
Suitable for 50L - 250L planters

Plant Sipper Tank
Linkable
L25, L21, L36

MATERIALS

An environmentally friendly product, made from recycled material in the UK.

BENEFITS

- Simple to install and an effective irrigation solution
- 100% water efficient - reduces over-watering and wastage
- Robust and secure while being discreet
- Helps establish bigger, stronger and longer-lasting plants
- Suitable for both interior and exterior planting projects
- Available in a variety of sizes to fit all containers and pots
- Can be planted at different depths to suit the plants roots
- Reservoirs range from 1L all the way up to 25L
- No mechanical, electrical or moving parts
- Aerates soil making it healthy to support plant growth

NOTES

GreenTheory™

INFO@GREENTHEORY.COM

+1.844.747.9283

greentheory.com

Date: 07/31/2024

Specification Sheet Version 1.0A

Green Theory reserves the right to revise technical specifications at any time without prior notice. Correct mounting hardware and the method of mounting of the product are imperative to user safety. Use installation instructions to correctly position and install product.

©2024 Green Theory Design

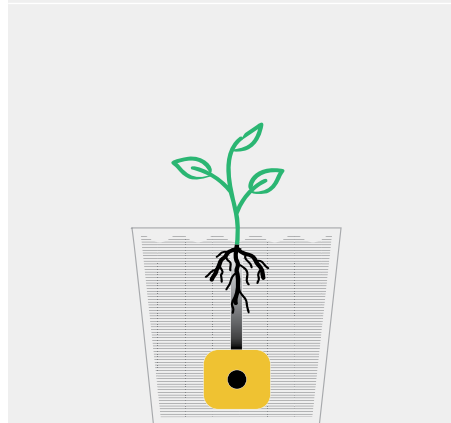
INSTALLATION



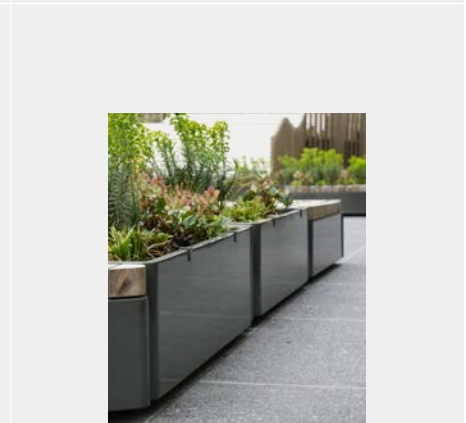
5. If your filler pipe needs cutting down, also cut the water level indicator flush with the top.



6. Fill the OPS tank with water to ensure all connections are water tight.



7. Back fill the entire container and plant as per design. Finally, activate the capillary process by giving the entire area a good surface watering to ensure good soil penetration.



8. Should the OPS tank system become empty, refill the system and repeat surface watering to reactivate the capillary process.