



ARMADILLO



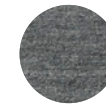
# Cable



Calico  
CAB-CAL



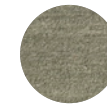
Chambray  
CAB-CHM



Seed  
CAB-SEE



Jade  
CAB-JDE



Bisque  
CAB-BSQ



Imperial	Metric	USD MSRP
5'7" x 7'10"	1.7 x 2.4 m	\$ 2,000
6'7" x 9'10"	2 x 3 m	\$ 3,000
8'2" x 11'6"	2.5 x 3.5 m	\$ 4,300
9'10" x 13'2"	3 x 4 m	\$ 5,900
Custom \$ /ft <sup>2</sup>	—	\$ 60.76
—	Custom \$ /m <sup>2</sup>	\$ 654

Length of rug does not include end finishes (1" each end).



VIEW PRODUCT ONLINE

Crafted by Hand

Construction: **Hand woven flat weave**  
End finish: **Cotton tassels**  
Height: **7/16"**

Handmade in India.  
Armadillo supports Care & Fair initiatives and projects.

Composition

100% Wool Pile with 100% Cotton  
Weft & Warp

Custom

Please contact your Account Manager for more information.

Declare Label compliant

Our rugs are 100% Red List Free.

Heat Flux Tested - Passed

Reaction to fire tests for floorings.

Suitability

Residential  
Light commercial

Areas of use

Living  
Dining  
Bedroom  
Home office  
Hall runner

## Care instructions

Refer to Armadillo website for more information.  
[armadillo-co.com/care-and-maintenance](http://armadillo-co.com/care-and-maintenance)

## Rug pad

We recommend using a rug pad to prevent slipping, provide extra comfort and extend the life of your rug.

## Size Variation

Due to the handmade nature of our products, Armadillo allows for a size variation of 3% (custom orders) to 4% (stocked items).

## Full Terms & Conditions

[armadillo-co.com/terms-and-conditions](http://armadillo-co.com/terms-and-conditions)