



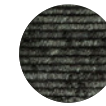
Malawi



Blush
MAL-BL



Kelp
MAL-KE



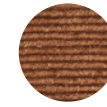
Mushroom
MAL-MU



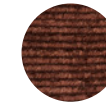
Oatmeal
MAL-OA



Saffron
MAL-SF



Amber
MAL-AM



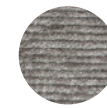
Custom Color

Imperial	Metric	USD MSRP
5'7" x 7'10"	1.7 x 2.4 m	\$ 1,700
6'7" x 9'10"	2 x 3 m	\$ 2,500
8'2" x 11'6"	2.5 x 3.5 m	\$ 3,600
9'10" x 13'2"	3 x 4 m	\$ 4,900
11'6" x 14'9" *	3.5 x 4.5 m *	\$ 6,400 *
Custom \$ /ft ²	—	\$ 50.45
—	Custom \$ /m ²	\$ 543

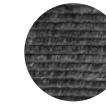
Length of rug does not include end finishes
(5 ½" each end).

* Oatmeal only.

Wren
MAL-WR



Graphite
MAL-GP



Crafted by Hand

Construction: **Hand knotted**
End finish: **Braided wool tassels**
Height: **5/8"**

Handmade in India. Armadillo supports
Care & Fair initiatives and projects.

Composition 100% Wool

Custom Please contact your Account
Manager for more information.

Declare Label Certified

Our rugs are 100% Red List Free.

VOC Tested - Passed

Our rugs emit the lowest levels of volatile
organic compounds.

Heat Flux Tested - Passed

Reaction to fire tests for floorings.

Suitability

Residential

Areas of use

Living

Dining

Bedroom



VIEW PRODUCT ONLINE

Care instructions

Refer to Armadillo website for more information.
armadillo-co.com/care-and-maintenance

Size Variation

Due to the handmade nature of our products,
Armadillo allows for a 3% size variation.

Rug pad

We recommend using a rug pad to prevent slipping,
provide extra comfort and extend the life of your rug.

Full Terms & Conditions

armadillo-co.com/terms-and-conditions