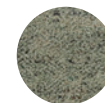




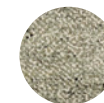
## Meadow



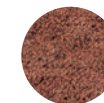
Seagrass  
MDW-SEA



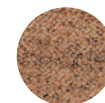
Pistachio  
MDW-PST



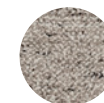
Brick  
MDW-BRK



Tamarillo  
MDW-TAM



Driftwood  
MDW-DFW



Imperial	Metric	USD MSRP
5'7" x 7'10"	1.7 x 2.4 m	\$ 1,800
6'7" x 9'10"	2 x 3 m	\$ 2,600
8'2" x 11'6"	2.5 x 3.5 m	\$ 3,700
9'10" x 13'2"	3 x 4 m	\$ 5,100
Custom \$ /ft <sup>2</sup>	—	\$ 58.06
—	Custom \$ /m <sup>2</sup>	\$ 625

Crafted by Hand

Construction: **Hand knotted**

End finish: **Turnover**

Height: **1"**

Knot count: **10 /inch<sup>2</sup>**

Handmade in India.

Armadillo supports Care & Fair initiatives and projects.

Suitability

Residential

Areas of use

Living

Bedroom

Hall runner

Composition

100% Wool Pile with 100% Cotton  
Weft & Warp

Custom

Please contact your Account  
Manager for more information.



[VIEW PRODUCT ONLINE](#)

Declare Label compliant

Our rugs are 100% Red List Free.

Heat Flux Tested - Passed

Reaction to fire tests for floorings.

### Care instructions

Refer to Armadillo website for more information.  
[armadillo-co.com/care-and-maintenance](http://armadillo-co.com/care-and-maintenance)

### Rug pad

We recommend using a rug pad to prevent slipping,  
provide extra comfort and extend the life of your rug.

### Size Variation

Due to the handmade nature of our products, Armadillo  
allows for a size variation of 3% (custom orders) to 4%  
(stocked items).

### Full Terms & Conditions

[armadillo-co.com/terms-and-conditions](http://armadillo-co.com/terms-and-conditions)