





# COLONIAL REVIVAL

ARCHITECTS & DESIGNERS	2025
JAIME RUMMERFIELD ELIZABETH GRAZIOLO LUCIE AYRES ERICA HAY	



# HISTORY



## ORIGINS

A prevailing style across the U.S. from the late 19th century through the mid-20th, Colonial Revival architecture draws cues from neoclassical, Georgian, and Federal designs with some key changes. Revival versions tend to include the addition of porticos, porches, and balconies, dormer windows, and side additions. Revival entryways are more decorative than their original counterparts, often involving sidelights, fanlights, pilasters, and pediments.





# KEY FEATURES

## WINDOWS

Symmetrical and evenly spaced, double-hung in standard grid patterns, often including dormers; shutters matching exterior window color.

## DOORS

Centered on facade, often framed by portico, flanked by sidelights or columns, topped with transom or fanlight.

## FACADES

Typically in brick or shingle, symmetrical or with intersecting masses.





**SYMMETRY**

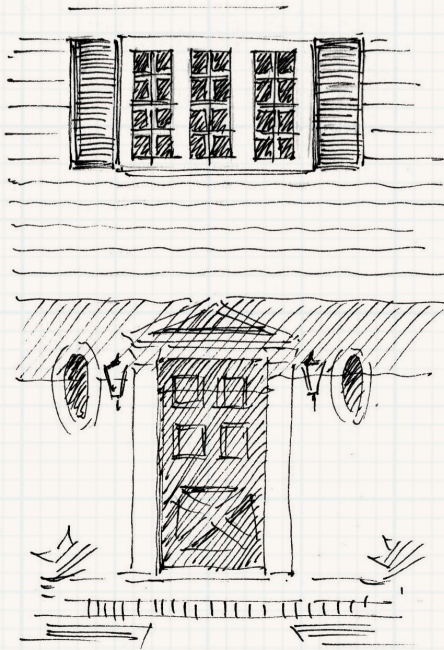
Both exterior and interior

**PROMINENT CHIMNEYS**

With traditional fireplaces

**PITCHED ROOFS**

With intersecting hips, topped with shingles







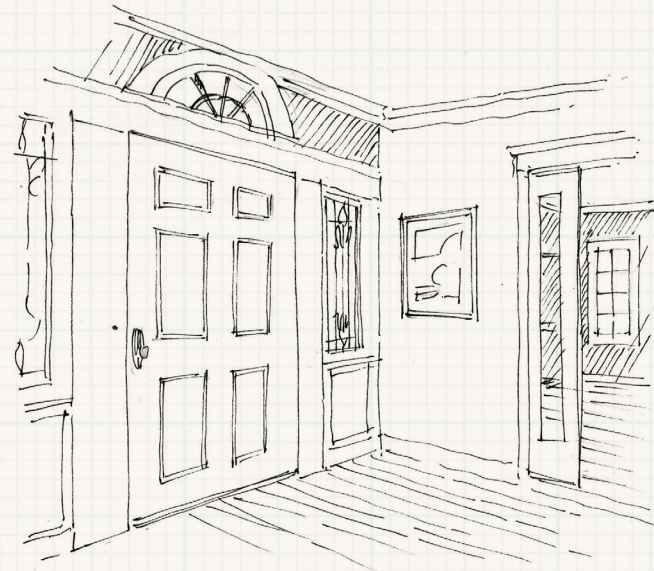
**DECORATIVE MILLWORK**

Crown molding, baseboards, chair rail, built-in shelving.

**DECORATIVE METALWORK**

Railings, grilles, banisters.

**ARCHED INTERIOR CASEMENTS**





# INSPIRATION



# & PRECEDENT





EXTERIOR FACADES





DETAILS AND INTERIORS



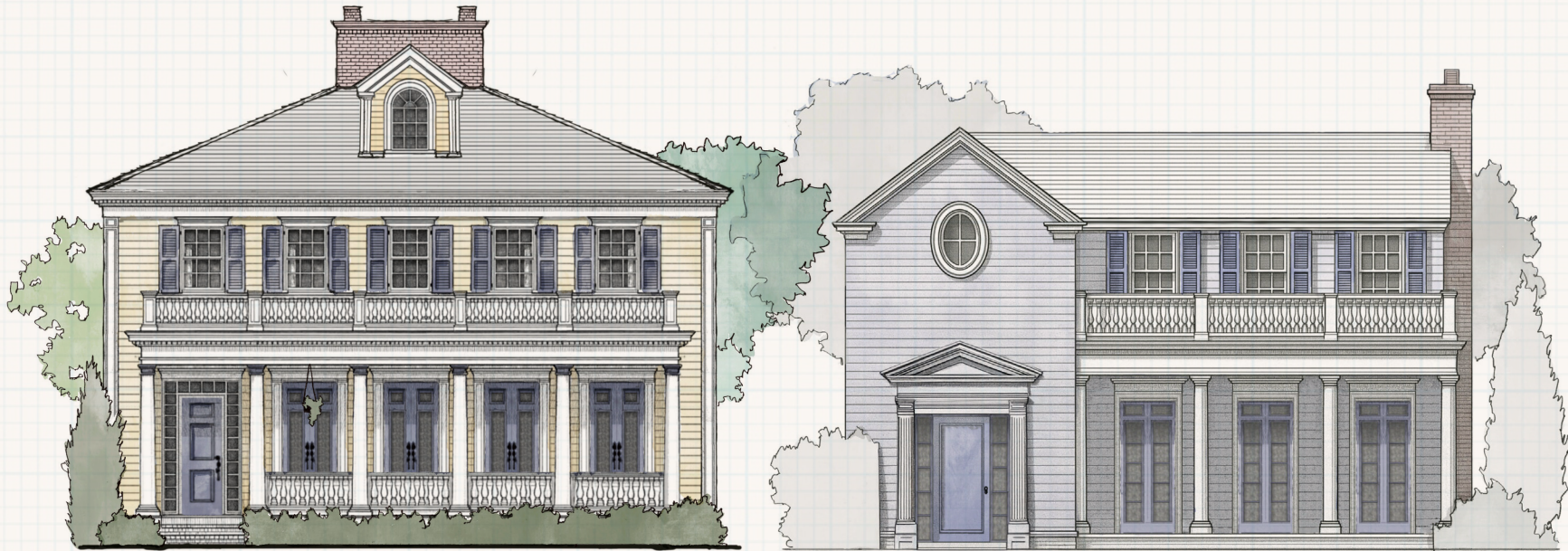


ELEMENTS & FIXTURES





# DESIGN

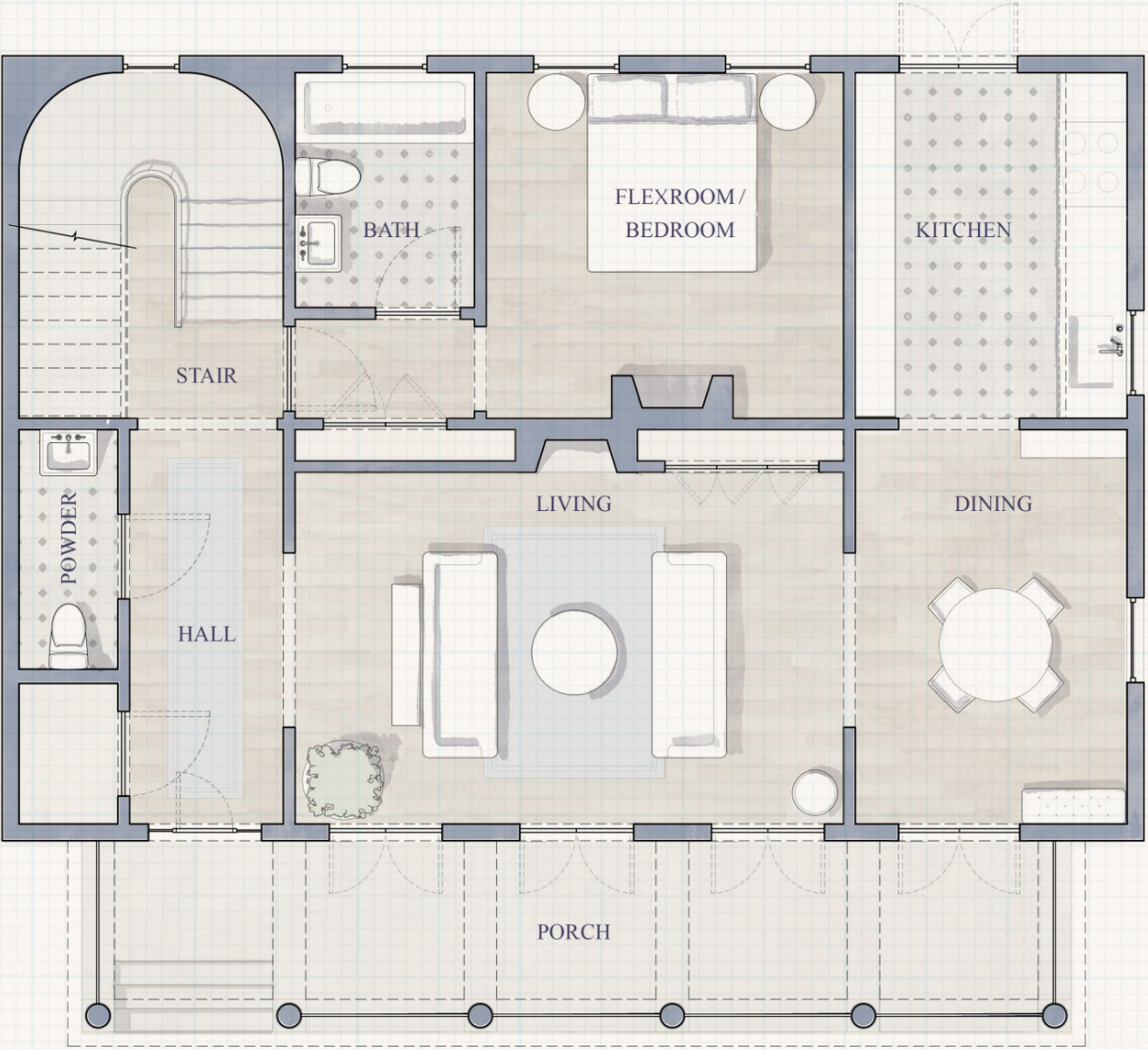


# CONCEPTS

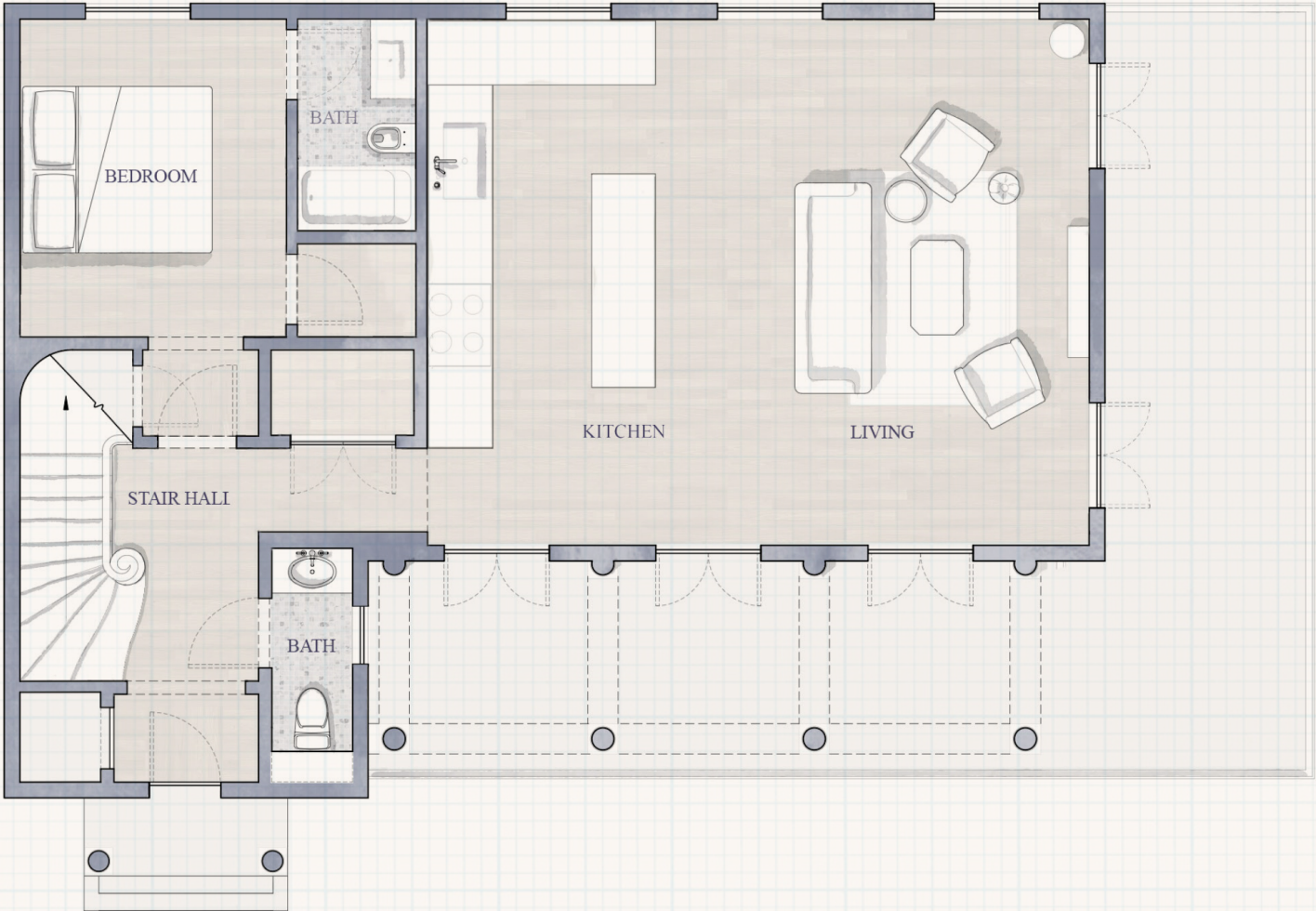






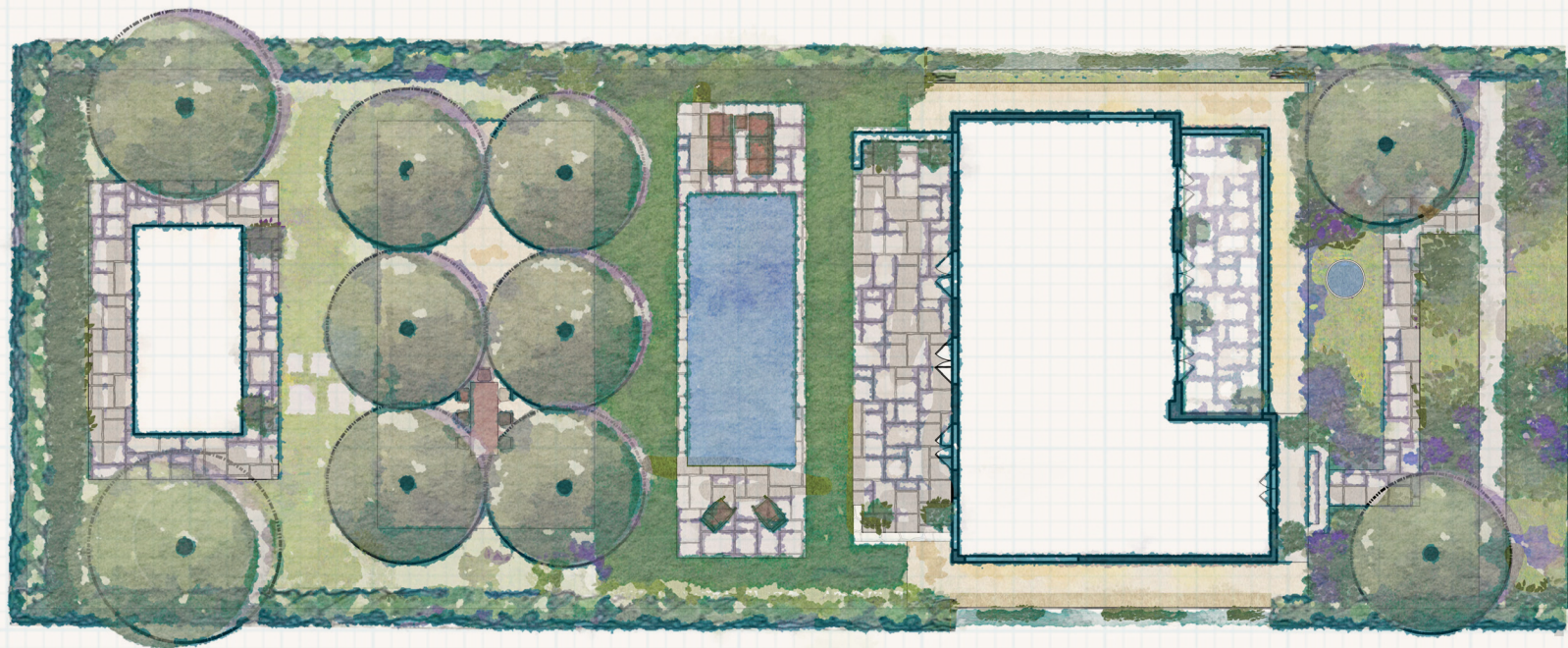








# LANDSCAPE



# CONCEPTS



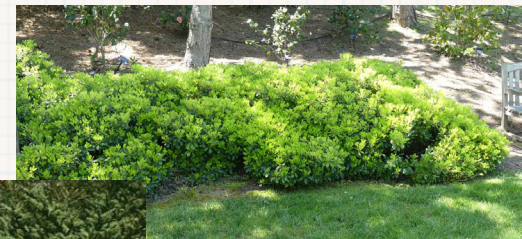
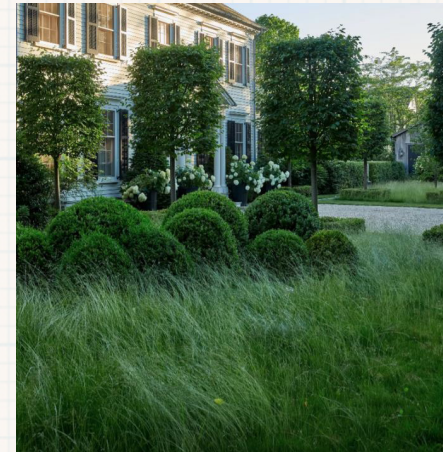
HARDSCAPE &  
GARDEN ELEMENTS





TREES & SHRUBS

*Largerstroemia Natchez*  
*Pittosporum Tobira Wheeler's Dwarf*  
*Boxwood*  
*Crape Myrtle*







## PLANTS

*Perovskia atriplicifolia*

*Evergreen Pear*

*Crown Princess Margarita Rose*

*Acanthus mollis*

*Honorine Jobert Japanese Anemone*

*Munstead Wood Rose*

