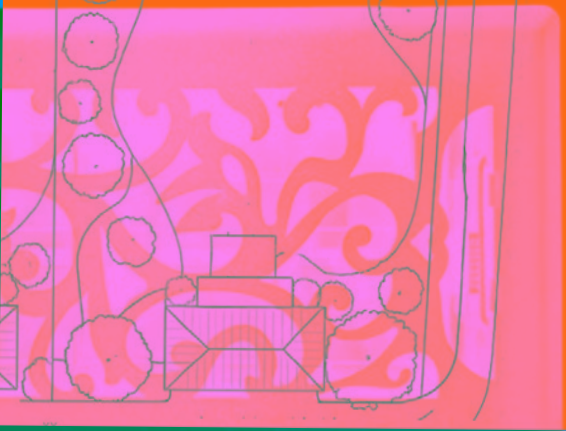


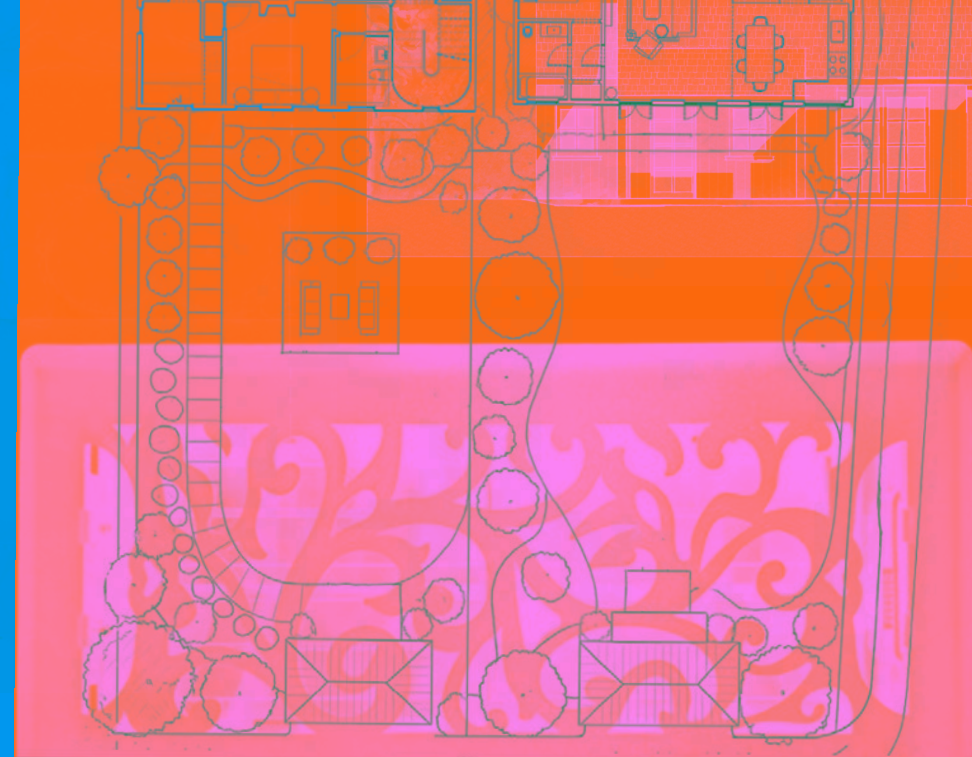
**NEW CALIFORNIA**

**CLASSICS**

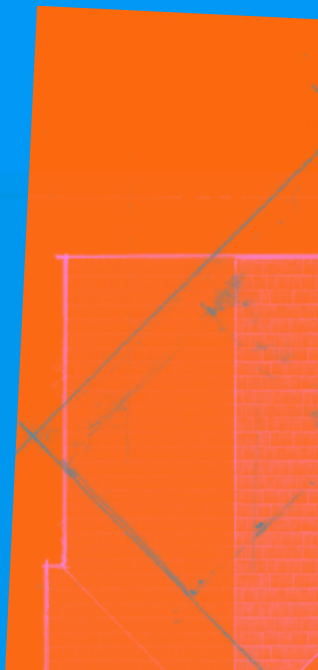




NEW CALIFORNIA  
classics



CHARACTER HOMES BASED ON THE ARCHITECTURAL HERITAGE OF PACIFIC PALISADES AND ALTADENA





A GUIDE FOR CONTEXTUAL REBUILDING



IN ALTADENA & THE PACIFIC PALISADES



CONTENTS

8 Introduction

12 History

GOLDEN CALIFORNIA PATTERN BOOK  
ARCHITECTURAL STYLES

20 California Modern

29 California Ranch

54 Colonial Revival

72 Craftsman

90 Cali Cod

108 Spanish Revival

126 Storybook

AN ARCHITECTURAL PATTERN GUIDE FROM





## THE NEW CALIFORNIA CLASSICS

The devastating wildfires that ravaged the Palisades, Altadena and Pasadena weren't just natural disasters—they were cultural catastrophes. Alongside the heartbreaking and devastating loss of communities, we witnessed the destruction of irreplaceable architectural treasures, some by legendary architects, others by the hands of history itself.

The wildfires that have swept through the Pacific Palisades and Altadena have left an indelible scar on the architectural and cultural history of these communities. Among the devastating losses are iconic midcentury and historic homes, masterpieces of design and innovation, each telling a story of creativity, elegance, and the harmonious and historic relationship between architecture and nature.

The Freedman House, Hees House, and Kesler House, all designed by the legendary Richard Neutra, exemplified his philosophy of merging indoor and outdoor living. Their clean lines, thoughtful integration into their surroundings, and innovative use of materials were hallmarks of a bygone era of modernism now reduced to ashes. Ray Kappe's Keeler House, with its bold cantilevered forms and warm materials, was a triumph of structural ingenuity and livability—a place that inspired all who were fortunate to experience it.

Altadena, too, suffered profound losses, including the Andrew McNally House by Frederick Roehrig, a Queen Anne treasure

and a testament to the grandeur of turn-of-the-century design. The Zane Grey Estate, an Altadena landmark steeped in literary history, and Scripps Hall, a spiritual and architectural icon, were beacons of the area's rich cultural heritage. Each structure held a unique narrative, now tragically extinguished.

Closer to the coast, the *Bridges House*, visible from Sunset Boulevard, stood as a quiet sentinel of craftsmanship, designed and built by Robert Bridges himself. And the *Will Rogers House*, a cornerstone of the Palisades' charm and history, was not just a home but a living symbol of community and storytelling.

Each of these places represented more than just bricks and mortar—they were windows into a creative and progressive past. Their loss is a somber reminder of the fragility of both art and nature. As we mourn these irreplaceable treasures, we are left with the memories they inspired and the resolve to honor their legacy in future preservation efforts.

Now, we stand at a critical juncture. As we plan to rebuild, we have an opportunity to not only restore what was lost but to reimagine it with reverence and care. The stakes are high. LA's cultural ethos—the creativity that draws the world here—depends on preserving its design heritage. Without a bold plan, we risk replacing our city's soul with mediocrity.

But there is still hope. Our city's story doesn't have to end with destruction. An incredible coalition built by

the architectural preservation organization Save Iconic Architecture and the Design Leadership Network have created an initiative for rebuilding LA through the eyes of historic California architecture called the New California Classics.

This group of the city's top architects, interior designers, and landscape practitioners have united to create a future that both honors our past and propels us forward. LA is ready for a renaissance—one that celebrates its creative spirit, safeguards its legacy, and redefines its architectural identity. With careful stewardship, we can create a new era of California Classics—inspirational homes that reflects the city's resilience and respects its legacy. This is the idea behind New California Classics; a pattern book that reflects seven styles of historic California: Spanish Revival, Colonial Revival, Palicod (Cali Cod), Storybook Cottage, California Modern, California Ranch, Craftsman. This resource guide is an academic reference of authentic details that create the story of soul of these homes. The pattern language book is a guide on how to rebuild historic communities in an authentic way, spanning everything from broad style and massing to details such as chimneys, courtyards, shutters, door and window styles, tiles, masonry, light fixtures, and landscape for resilience. Our goal is to defeat soulless boxes and bring hope and inspiration for architecture that is mindful, beautiful, and that defines true California living.

Jaime Rummerfield

CO-FOUNDER, SAVE ICONIC ARCHITECTURE (SIA)



WHAT ROLE CAN DESIGN PLAY IN A CRISIS?

Over the course of the past 13 months, this has been the driving question behind the DLN’s *Rebuilding Committee for California*, a virtual advisory group that has been meeting weekly since the outbreak of California’s devastating wildfires last January. From early information sharing discussions to the eventual formation of three Action Groups—Emergency Response, Best Practices, and Design Vision—the group has sought to apply design knowledge and creative thinking to address ever-shifting needs as California communities recover, plan, and rebuild post-fires.

The most aesthetics-oriented of the groups, the Design Vision committee took on an ambitious goal: *to define the future of LA’s vernacular architecture*. As a passionate preservationist, Jaime Rummerfield was the champion of this cause, leading the group through months of meetings; hours spent researching historic house styles, materials, and examples, and a two-day design charette where thirty architects, interior designers, builders, and partners from the DLN community convened for a marathon session of sketching. Now, this creative collaboration manifests in *The New California Classics*, a guide to seven regionally appropriate architectural styles intended as a starting point for contextually sensitive, community-enriching new designs.

As creatives, it turns out, our role in a crisis like this is a vital one. It’s about defining the future while building off of the

past, ensuring that a place’s stories, culture, and history aren’t forgotten, and giving those who lost everything the most powerful gift: a sense of home.

The hope for this pattern book is that it allows homeowners, builders, architects, planners, and community leaders to rebuild with a sense of purpose, history, and place. That’s what has long made the Palisades a beloved community and it’s what will make it undoubtedly a vibrant one once again.

Hadley Keller Lloyd

EDITORIAL DIRECTOR, DESIGN LEADERSHIP NETWORK



# HISTORY:

# ALTADENA

A BRIEF HISTORY OF ALTADENA, CALIFORNIA  
BARBARA LOWENTHAL

Originally inhabited by the Tongva people, Altadena was founded as such in 1887 when Spanish settlers built the San Gabriel Mission, leading to land grants by the Mexican Government. Altadena was part of the Rancho San Pascual grant given to Juan Marine in 1824. As with many Southern California communities, immigrants from the East and Midwest soon moved into the area. Some notable residents who purchased part of Rancho San Pascual were Davis Wilson (Mount Wilson),and Benjamin S. Eaton (Eaton Canyon). John and Frederick Woodbury, the so-called “Fathers of Altadena” bought most of the land that became Altadena.

The noted abolitionist Owen Brown, who participated in his father John Brown’s famous raid on Harpers Ferry, settled there in 1885 to join his brother and sister. The family famously opposed the Chinese Exclusion Act of 1882, but were mostly respected for their contributions to the temperance movement. It took until the 1950s, after the establishment of the Family Savings and Loan Association in 1949, for Black and Asian families to begin buying homes in the area. This began the history of fostering generational wealth through long term home ownership.

Without an Historic Preservation Ordinance, the 1986 Community Plan focused on maintaining and enhancing the community’s existing character. This character is seen through

the many Architectural styles which include Craftsman, California Bungalow, Spanish Colonial Revival, English Tudor, Cottage Style, California Ranch, and Mid Century Modern,

Batchelder tiles are also prominent in Altadena homes and a celebrated part of Altadena history. Other kiln fired tiles found here are Claycroft, Gladding McBean and California Faience—many of which survived the Eaton Fire.

NOTABLE AREAS & BUILDINGS:

- Christmas Tree Lane
- Equestrian Block
- Old Marengo Park
- Norwic Village
- Cobb Estate
- Janes Village
- Andrew Mc Nally House

# HISTORY:

# PACIFIC

# PALISADES

## A BRIEF HISTORY OF PACIFIC PALISADES, CALIFORNIA

### BARBARA LOWENTHAL

Originally inhabited by the Tongva People, the area today known as the Pacific Palisades was developed—like much of Southern California—through land grant. The Rancho Boca de Santa Monica grant transferred some 6,656-acres to Ysidro Reyes and Francisco Marquez, who built the first adobe homes in the area. In 1920, the Methodist Episcopal Church began to develop the town’s historic building block between Antioch and Sunset.

Filmmaker Thomas H. Ince (known as the “father of the Western”) began developing nearby Inceville as a film studio and the location of many western movies. By 1911, Inceville had 700 residents. Lake Shrine, a religious institutional development, opened in the area in 1929, setting an example for a thoughtfully designed landscape.

In 1928, the area expanded with the Castellammare Housing Development, which offered attractions like Thelma Todd’s Sidewalk Café as well as architectural landmarks like the Mediterranean revival Villa de Leon, one of the first built in the Castellammare tract.

1929 was a major year for development in the region. The Methodists created the Alphabet Streets neighborhood, and other neighborhoods followed: The Village, El Medio Mesa, Marquez Knolls, Via Bluffs & Huntington, El Medio Bluffs,

Rustic Canyon, Riviera, Palisades Highlands and Santa Monica Canyon.

1929 also saw the dedication of the Roosevelt Highway (now Pacific Coast Highway), opening 50 miles of seaside beauty between Malibu and Oxnard. By late 1929, all areas of the modern day Pacific Palisades were developed. On August 18, 1929 the cornerstone for the Methodist Episcopal Church was dedicated and the first permanent school building, Palisades Elementary, was dedicated on June 12, 1931.

The Pacific Palisades encompasses myriad architectural styles, among them Spanish Revival, Regency Revival, Art Deco, Midcentury Modern, California Ranch, Storybook, Cottage Style, Spanish, and Craftsman Bungalows.

#### NOTABLE BUILDINGS:

Will Rogers State Historic Park  
Eames House  
Villa de Leon  
Ronald Reagan House  
Bel Air Bay Club  
The Riviera Club





# NEW CALIFORNIA

GOLDEN CALIFORNIA

# PATTERN

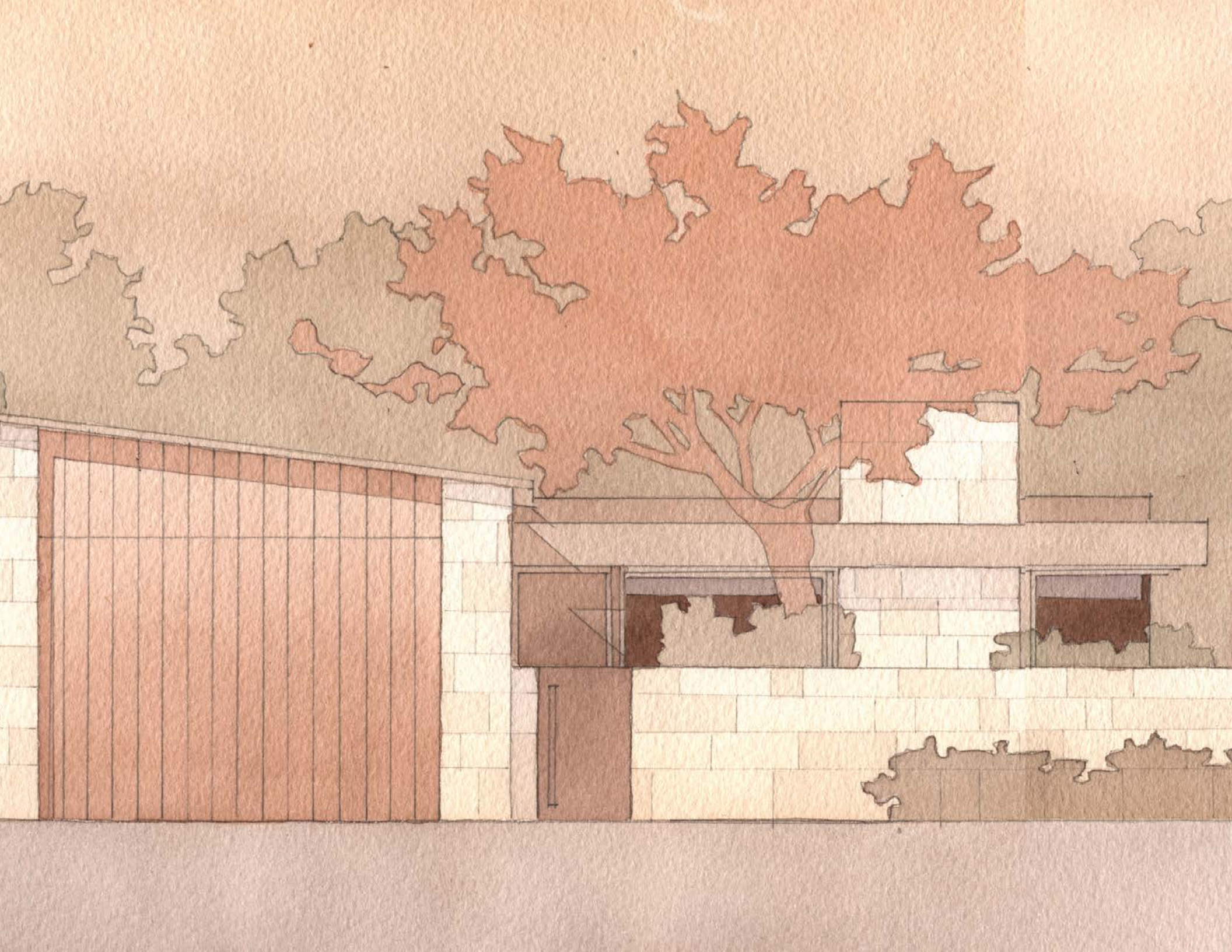
# BOOK

# CLASSICS



# MODERN<sup>20</sup> / RANCH<sup>38</sup> / COLONIAL REVIVAL<sup>54</sup> / CRAFTSMAN<sup>72</sup> / CALI COD<sup>89</sup> SPANISH REVIVAL<sup>108</sup> / STORYBOOK<sup>126</sup>





# CALIFORNIA MODERN

ARCHITECTS & DESIGNERS	2025
MAY SUNG CATHERINE KWONG SHANNON WOLLACK	



# HISTORY

## ORIGINS

California Modern architecture began to take shape in the 1930s and gained momentum through the 1940s to 1960s, especially in postwar Southern California. Influenced by European Bauhaus and International Style architects who had migrated to the U.S., designers like Richard Neutra, Rudolph Schindler, and Joseph Eichler helped define the movement. They embraced new materials, affordable construction techniques, and a philosophy centered on clean, functional design that responded to the mild California climate. These homes were designed with open layouts, extensive glass, and easy access to nature—perfect for a relaxed, modern lifestyle. Over time, California Modernism became a symbol of West Coast innovation and laid the groundwork for many contemporary architectural ideas we see today.

## HISTORICAL EXAMPLES

Case Study House #8 by Charles and Ray Eames

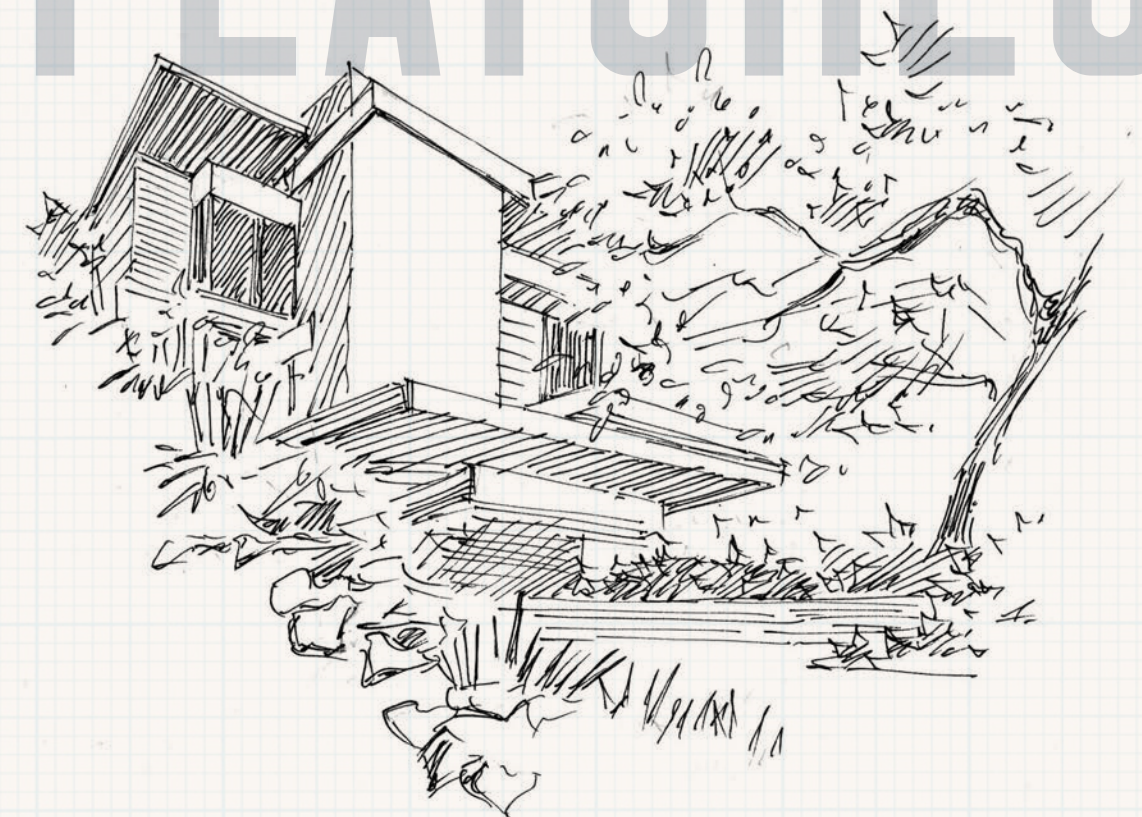
Bailey House by Richard Neutra

Strick House by Oscar Niemeyer

Schindler House by Rudolph M. Schindler



# KEY FEATURES



## ROOFLINES

Flat or low-pitched.

## WINDOWS

Large, usually horizontally-oriented, sans muntins.

## DOORS

Geometric, often glass or sliding.

## WALLS

Concrete or glass, defined by material rather than paint or wallpaper.



**GEOMETRIC SHAPES**

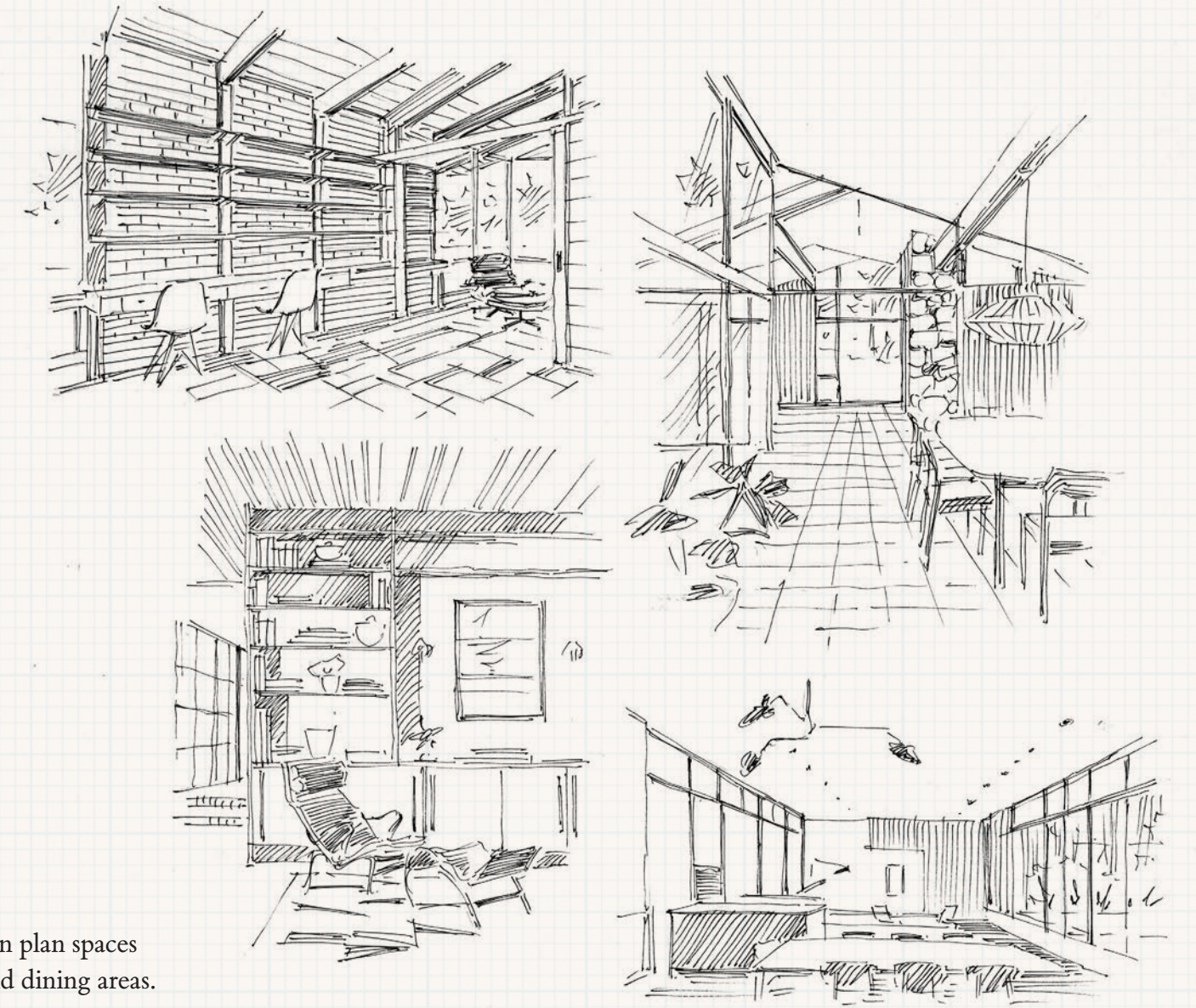
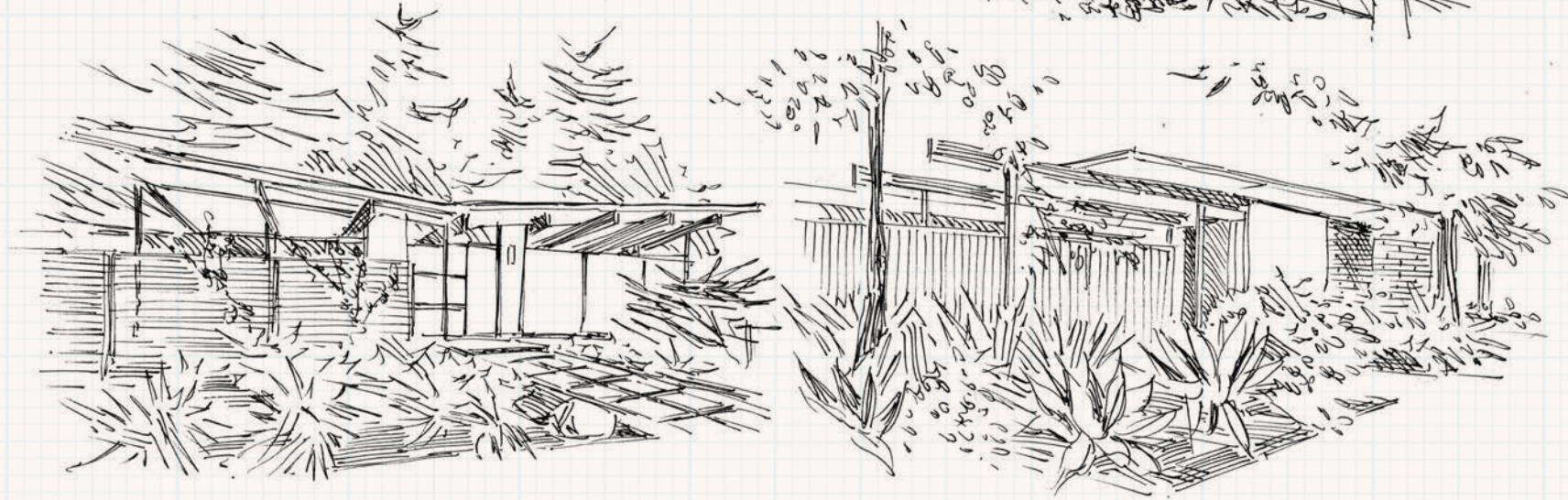
Including boxy volumes, cantilevered overhangs, and ribbon windows.

**MINIMAL ORNAMENTATION**

To keep focus on the site and architecture rather than decorative detail.

**INDOOR-OUTDOOR CONNECTION**

Seamless flow from indoors to out and an emphasis on connecting architecture to site and views.

**OPEN LAYOUTS**

Simplified architecture means eliminating walls to create open plan spaces comprising kitchens, living, and dining areas.

**BUILT IN FURNITURE**

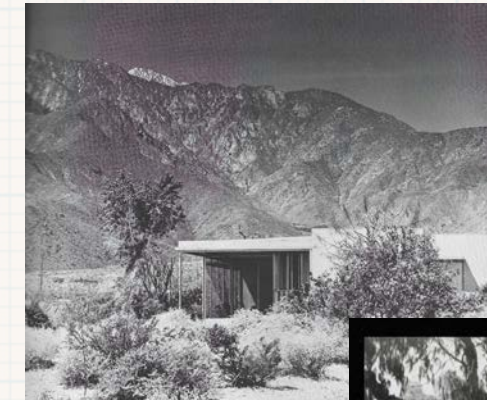
Including bookshelves, millwork, and even seating.



# INSPIRATION



EXTERIOR FACADE



CONNECTION TO SITE



# & PRECEDENT



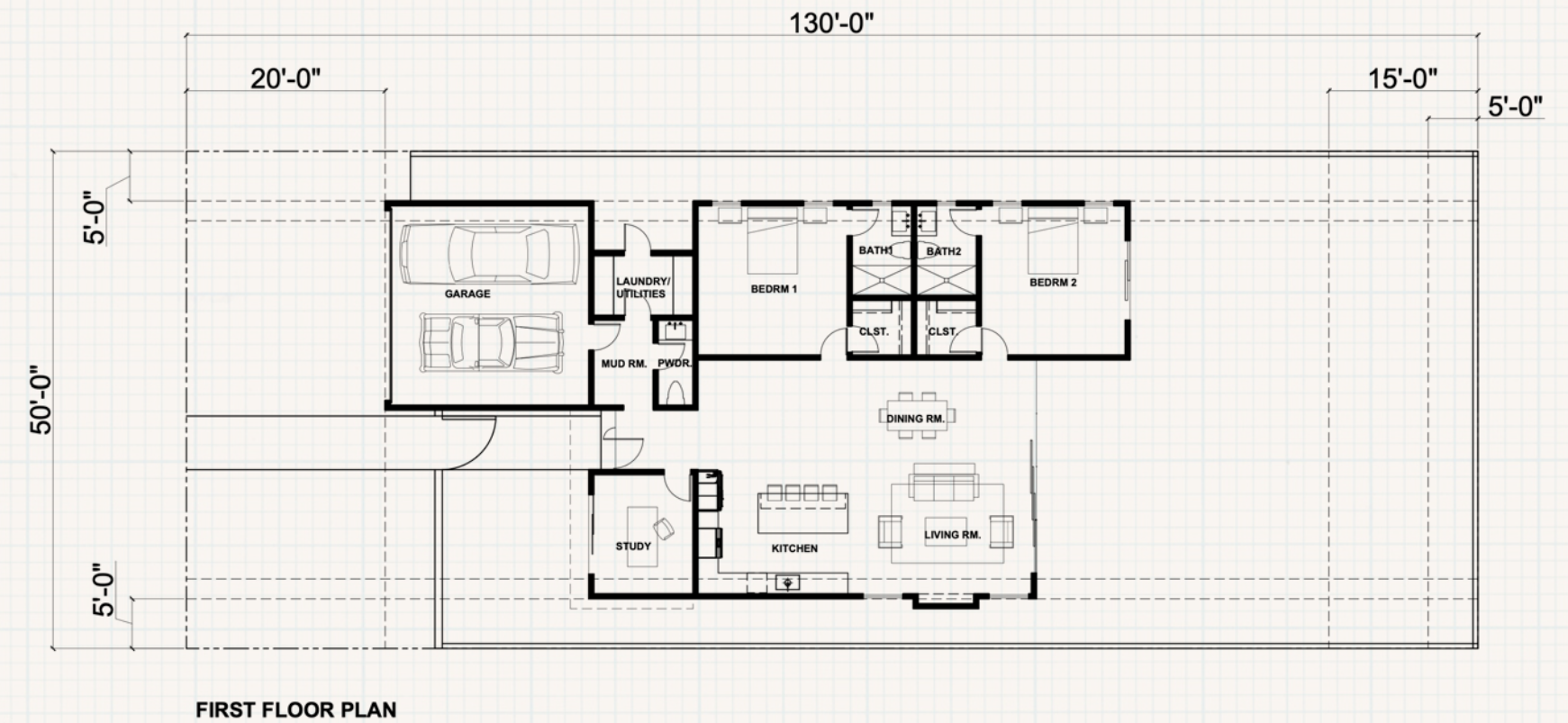
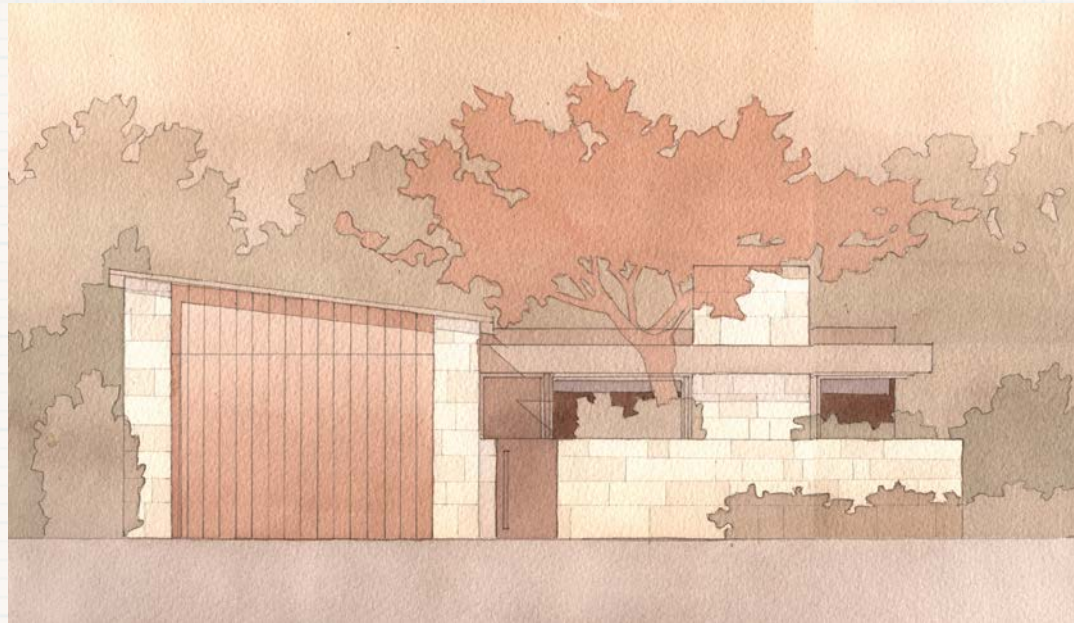
OPEN FLOORPLANS



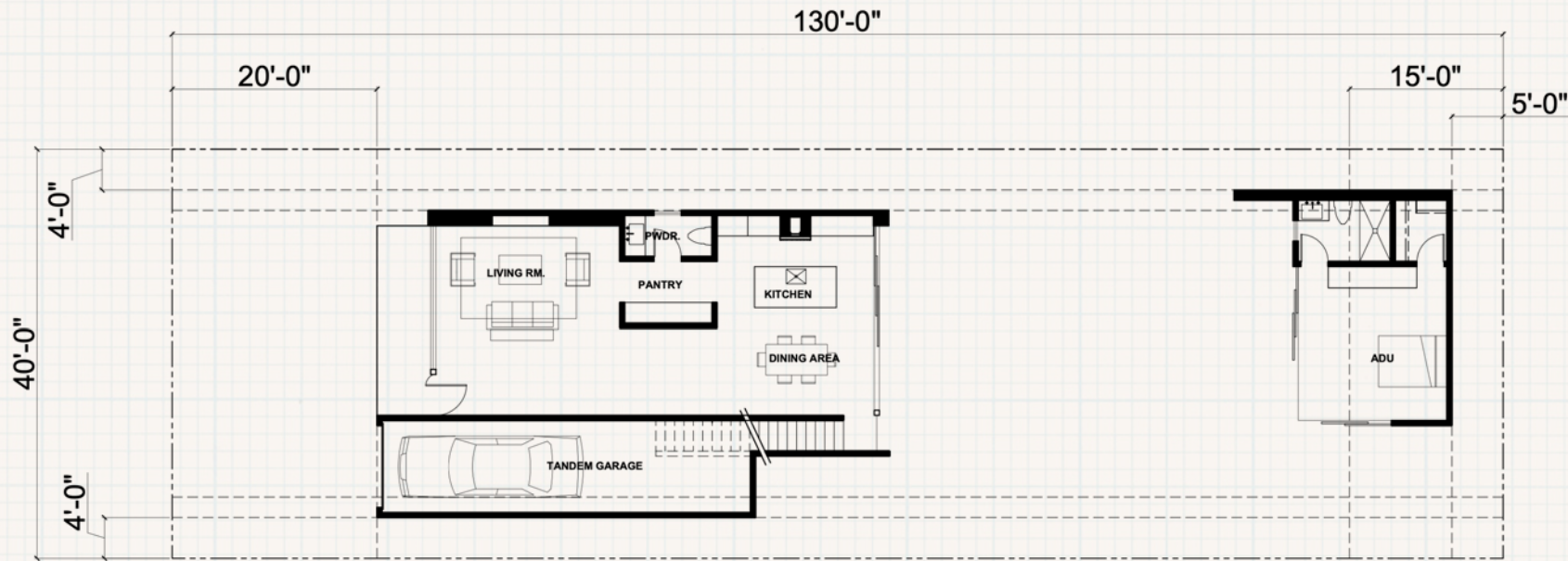
INDUSTRIAL MATERIALS,  
CERAMIC TILES



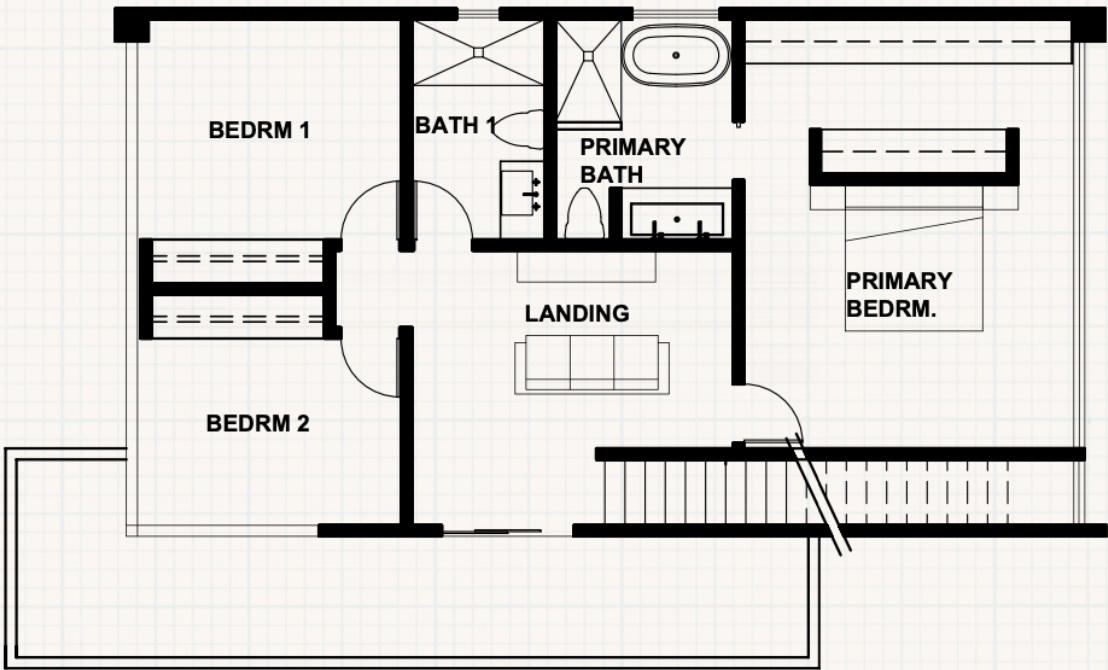








FIRST FLOOR PLAN





# LANDSCAPE



# CONCEPTS

## HARDSCAPE & GARDEN ELEMENTS





TREES & SHRUBS

*Japanese Maple*  
*Tristania Elegans*  
*Ilex Nana*



PLANTS

*Agave Stricta*  
*Tristania Elegans*  
*Yarrow*  
*Frog Fruit*







# CALIFORNIA RANCH

ARCHITECTS & DESIGNERS	2025
PATTI BAKER BARBARA LOWENTHAL KEVIN CLARK PATRICIA BENNER	



# HISTORY

## ORIGINS

Much of southern California’s design owes its inspiration to Spanish influence—and the California Ranch is no different. An adaptation of the single-story Spanish Mission houses popular in the mid 19th century, California Ranches gained popularity in the mid 1930s. They’re characterized by a low, horizontal shape, broad roof overhangs, and vaulted ceilings above a single story. More contemporary iterations tend to incorporate L or U-shaped layouts, large windows, and ample connection between indoors and out.

## HISTORICAL EXAMPLES

Cliff May, Horton Development

Ronald Reagan’s Pacific Palisades Home

Modern Ranch Homes



# KEY FEATURES

## EXTERIORS

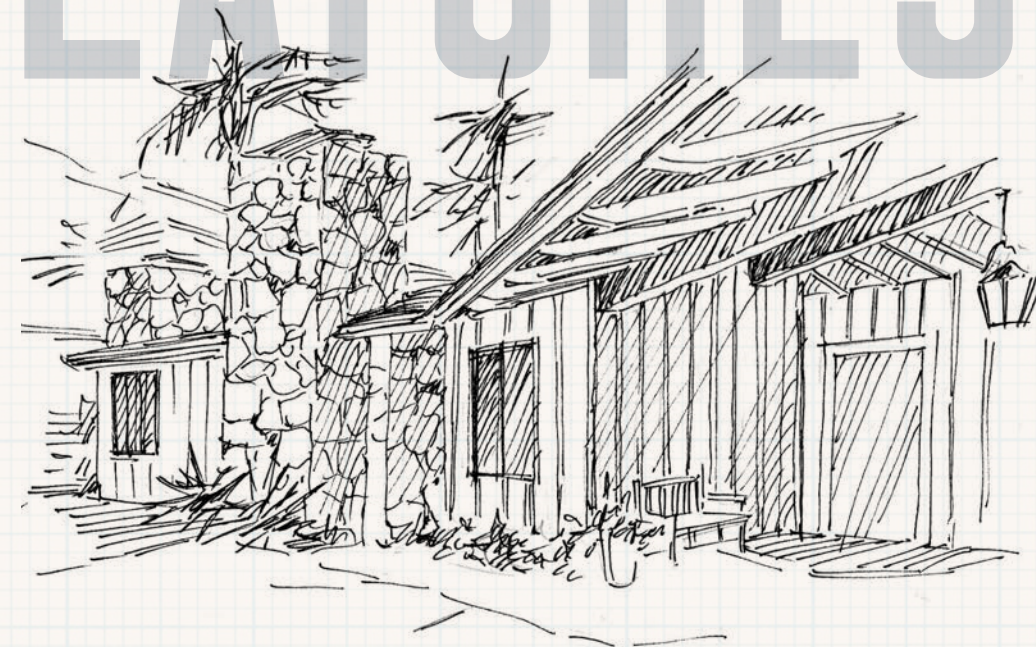
Low-slope, front or side-gable roofs, typically single story. Massing can be simple and traditional (with front and side gable roofs) or complex and modern (with single-pitch or floor roofs).

## WINDOWS

Heights ranging from six to eight feet and styles including small casements, standard double-hung, and large walls. Simple exterior casing with flat masonry or stucco.

## DOORS

Aligned with tops of windows; solid wood or small, narrow glass panel; sliding doors opening to outdoor spaces are common.





LOW-PITCHED ROOFS

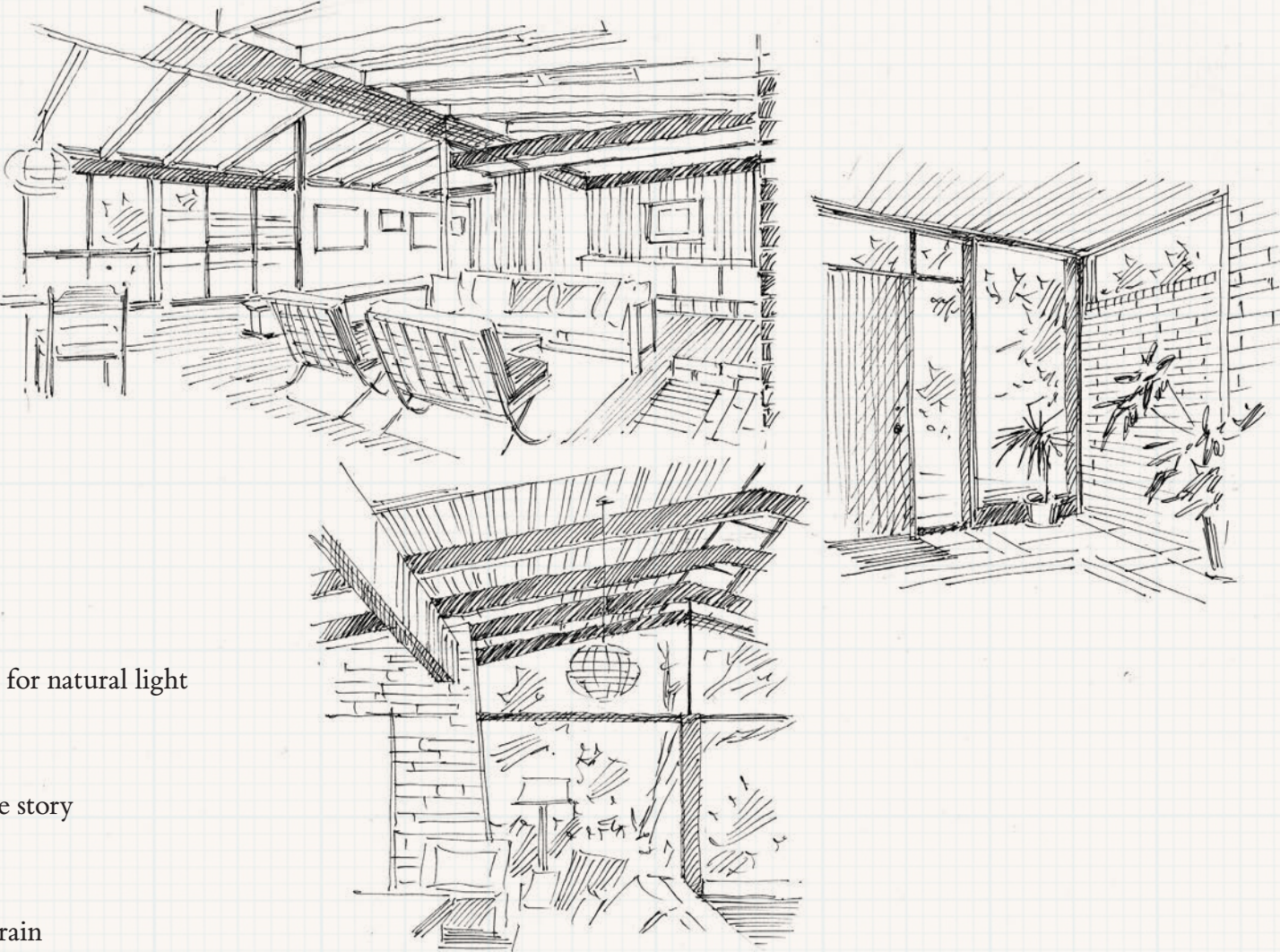
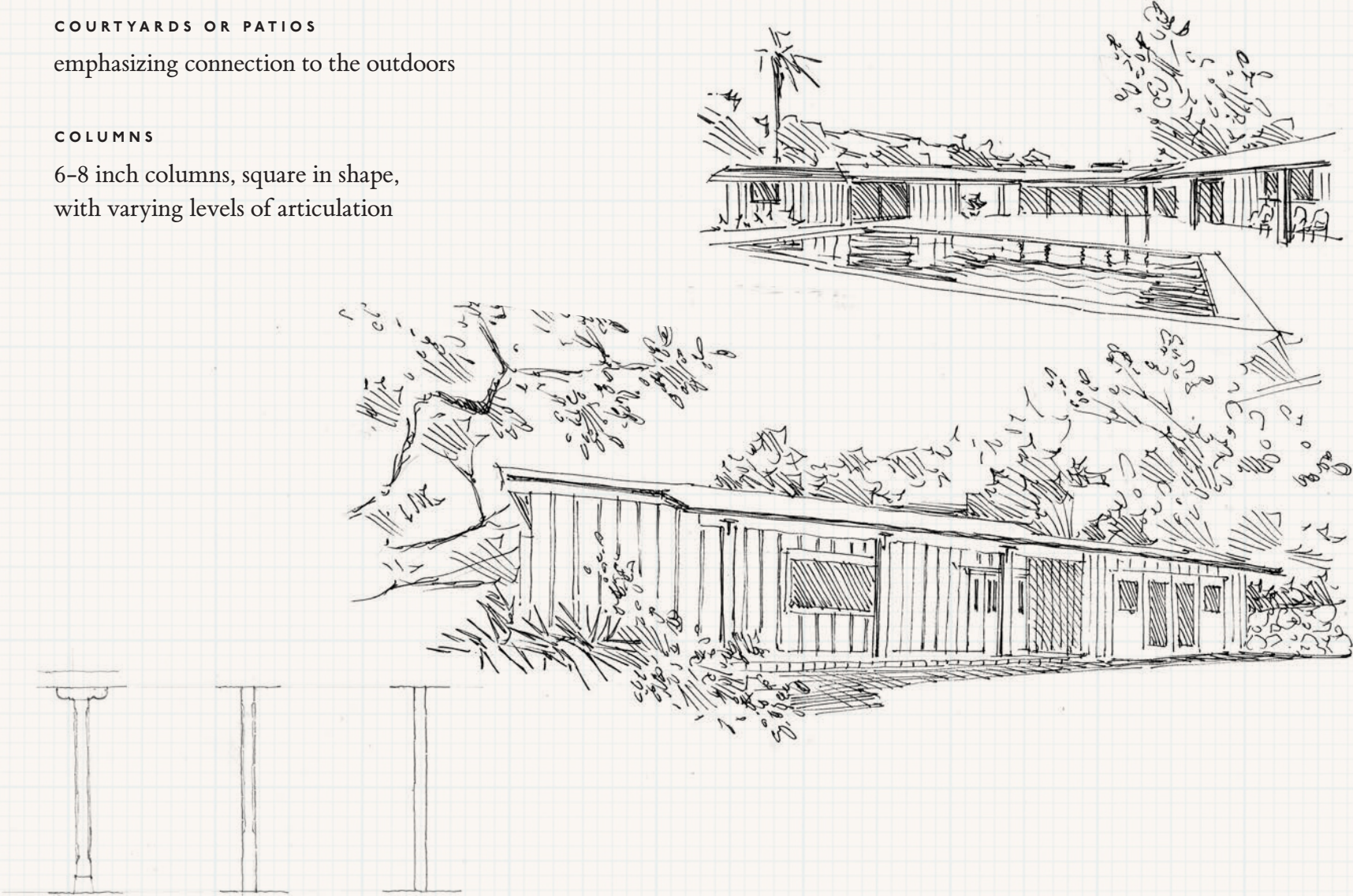
Overhangs with deep eaves

COURTYARDS OR PATIOS

emphasizing connection to the outdoors

COLUMNS

6-8 inch columns, square in shape,  
with varying levels of articulation



LAYOUT

Open, wide spaces to allow for natural light

VAULTED CEILINGS

To maximize space in single story

EXPOSED BEAMS

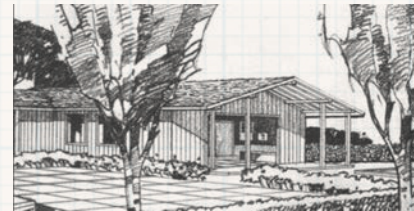
showcasing natural wood grain

NATURAL MATERIALS

Reflecting the landscape outdoors  
and infusing warmth



# INSPIRATION & PRECEDENT



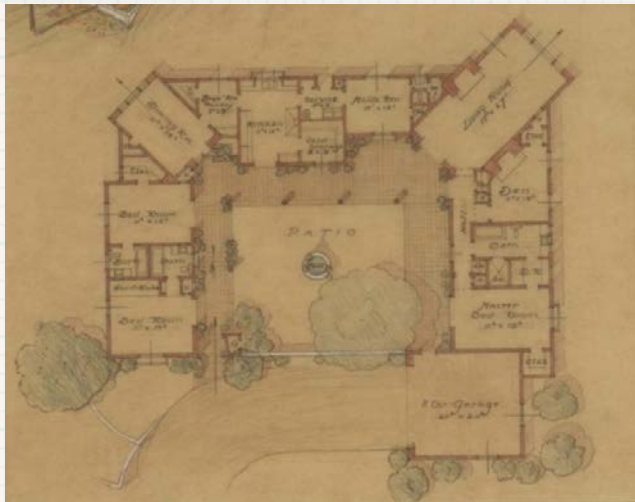
CALIFORNIA RANCH: INSPIRATION & PRECEDENT

EXTERIOR FEATURES

THE NEW CALIFORNIA CLASSICS



OPEN WOOD INTERIORS



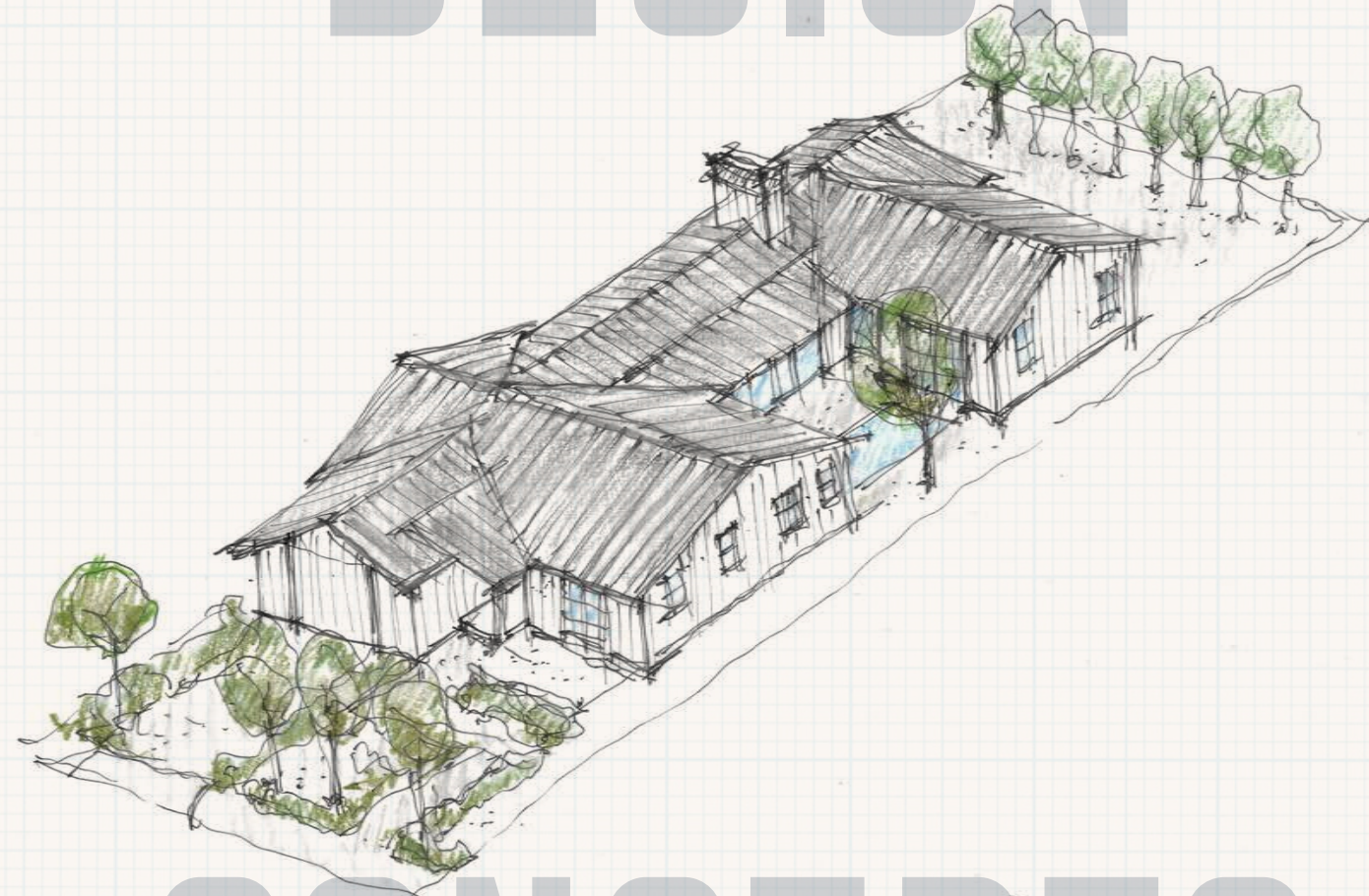
NATURAL MATERIALS  
TILE, STONE & WOOD



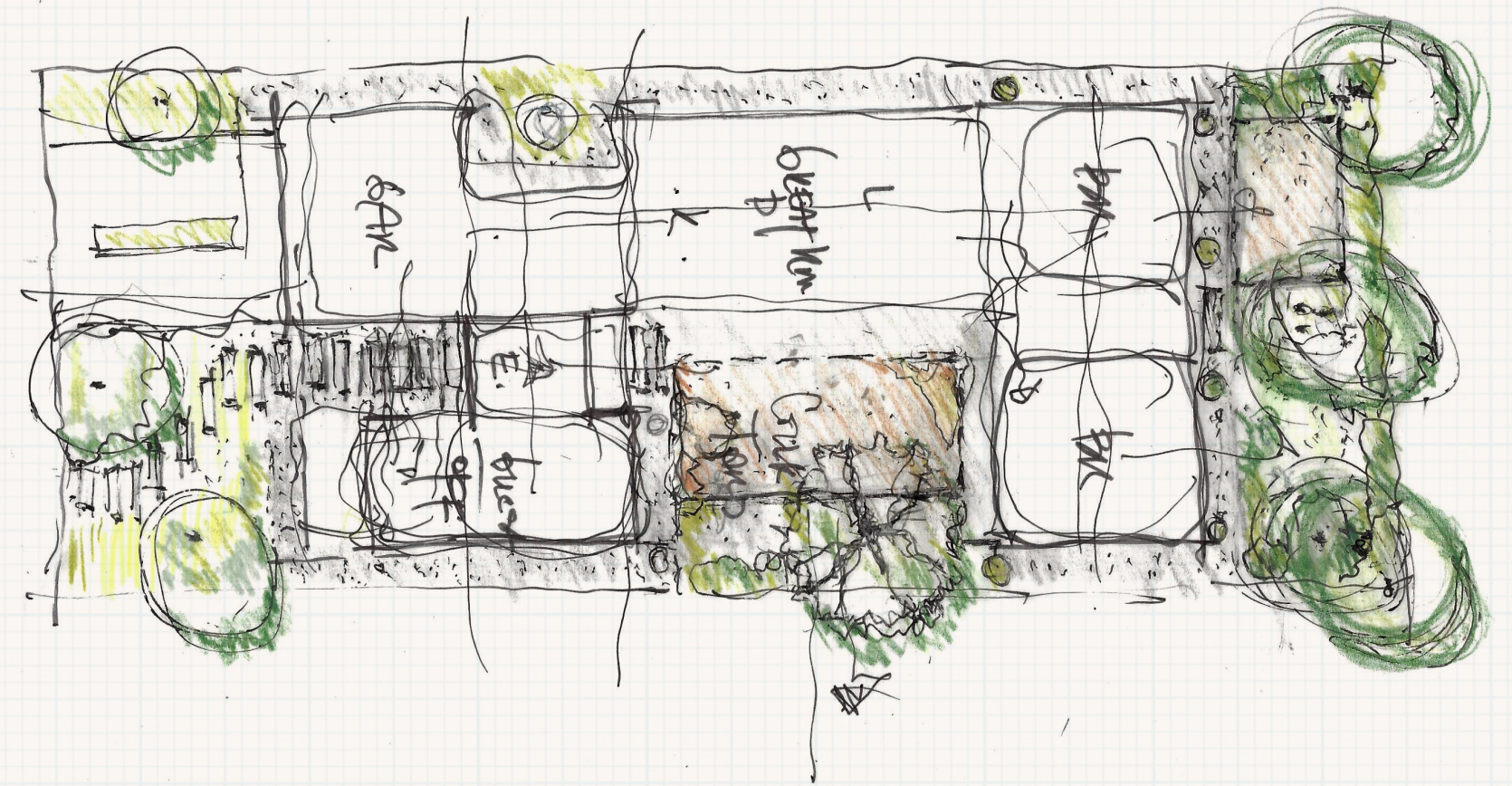
- Atrium White OC-145
- Baby Fawn OC-15
- Soft Satin 2104-60
- Shaker Beige HC-45
- Stonington Gray HC-170
- Palladian Blue HC-144
- Audubon Russet HC-51
- Garrison Red HC-66
- Driftwood 2107-40
- York Harbor Yellow 2154-40
- Louisburg Green HC-113
- Charcoal Slate



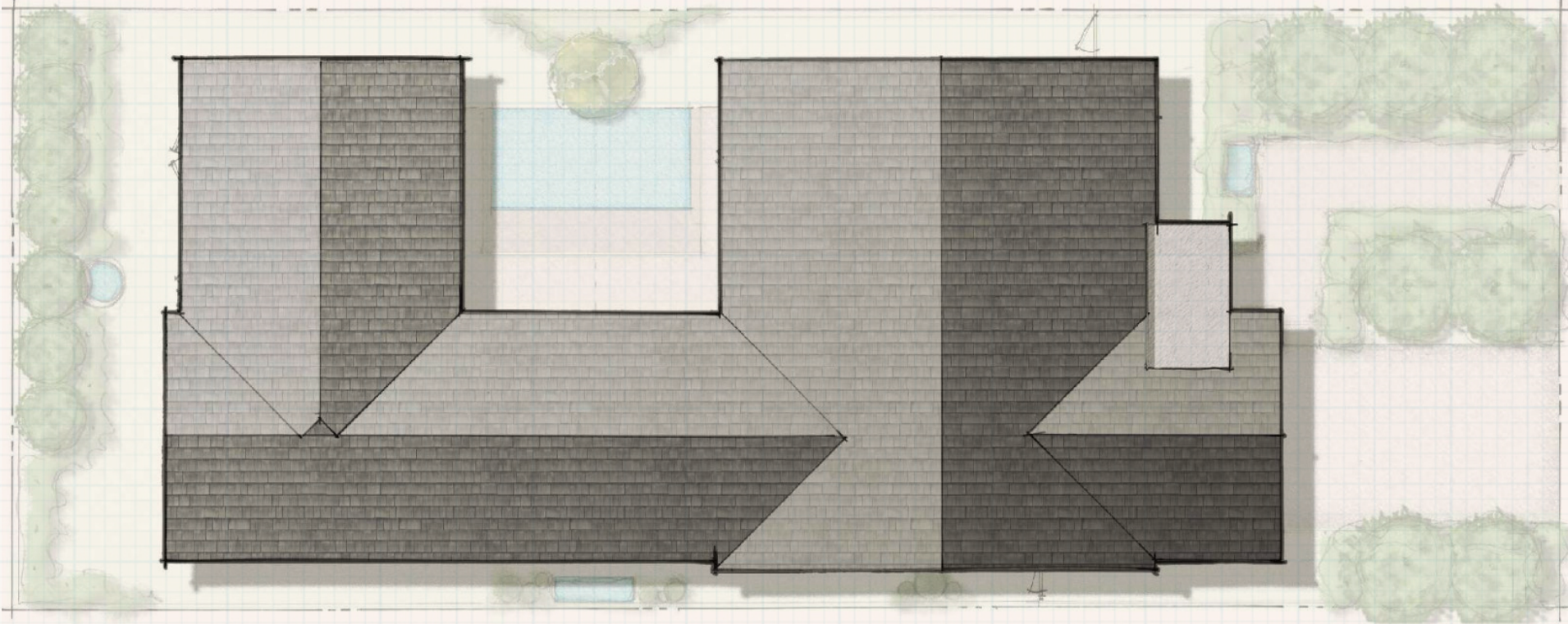
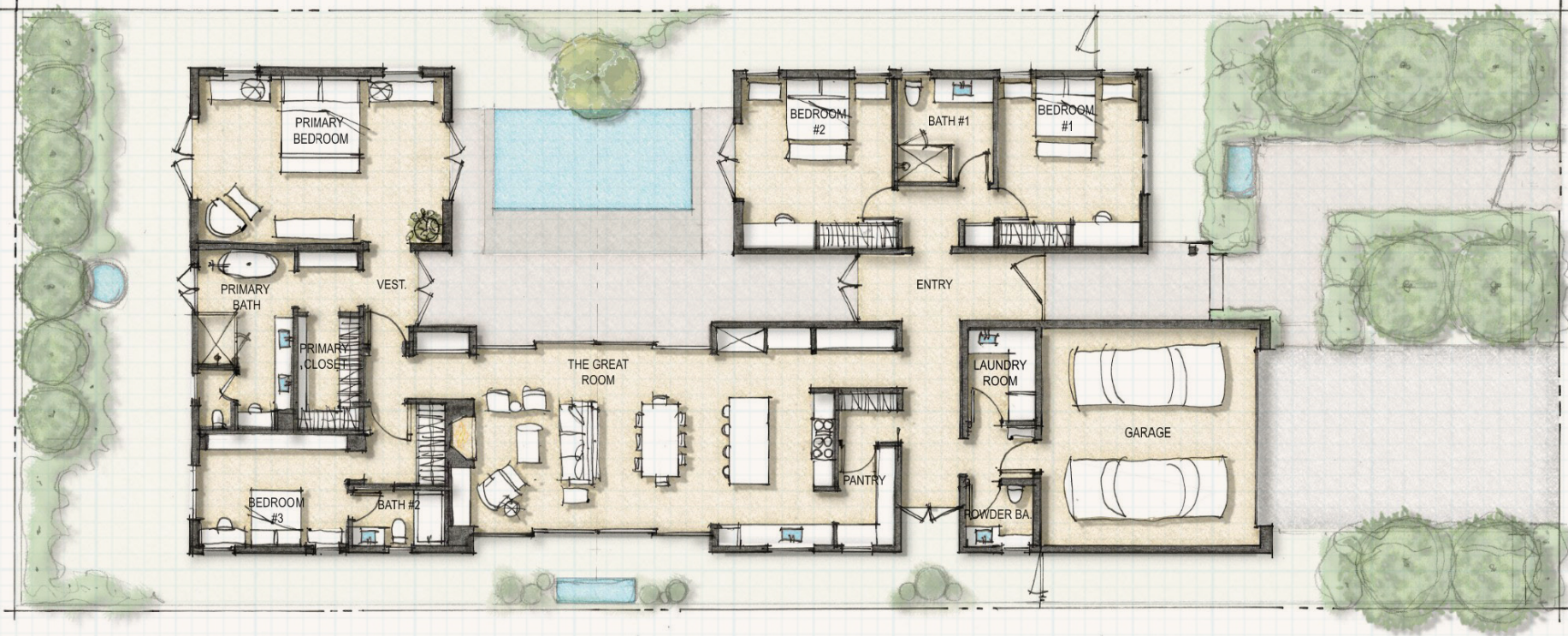
# DESIGN



# CONCEPTS

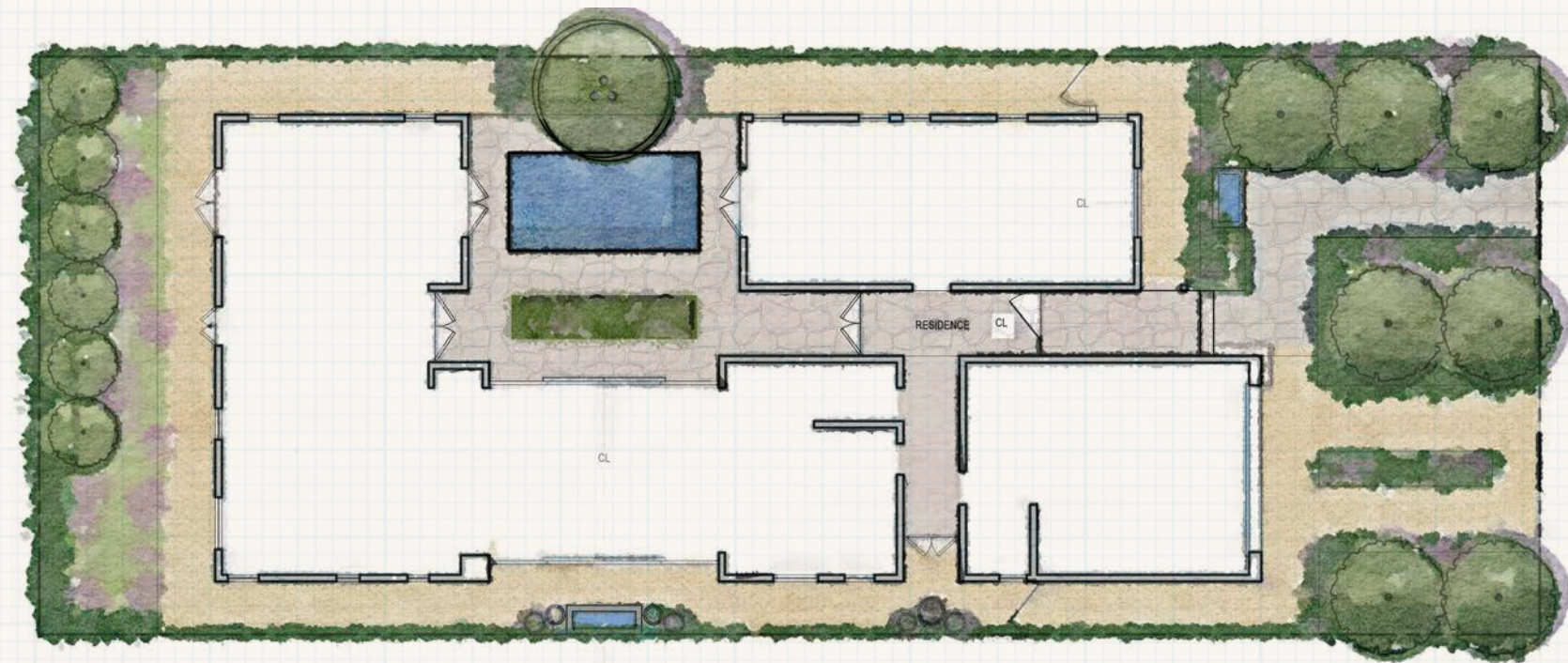








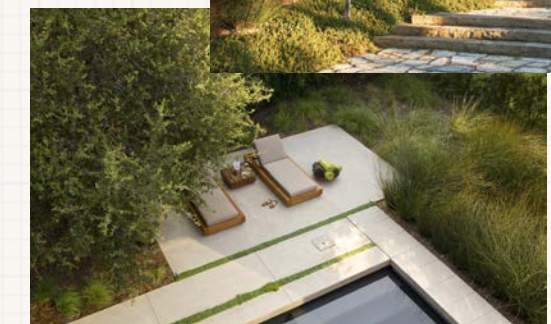
# LANDSCAPE



# CONCEPTS



HARDSCAPE &  
GARDEN ELEMENTS







# COLONIAL REVIVAL

ARCHITECTS & DESIGNERS	2025
JAIME RUMMERFIELD ELIZABETH GRAZIOLO LUCIE AYRES ERICA HAY	



# HISTORY

## ORIGINS

A prevailing style across the U.S. from the late 19th century through the mid-20th, Colonial Revival architecture draws cues from neoclassical, Georgian, and Federal designs with some key changes. Revival versions tend to include the addition of porticos, porches, and balconies, dormer windows, and side additions. Revival entryways are more decorative than their original counterparts, often involving sidelights, fanlights, pilasters, and pediments.



# KEY FEATURES

## WINDOWS

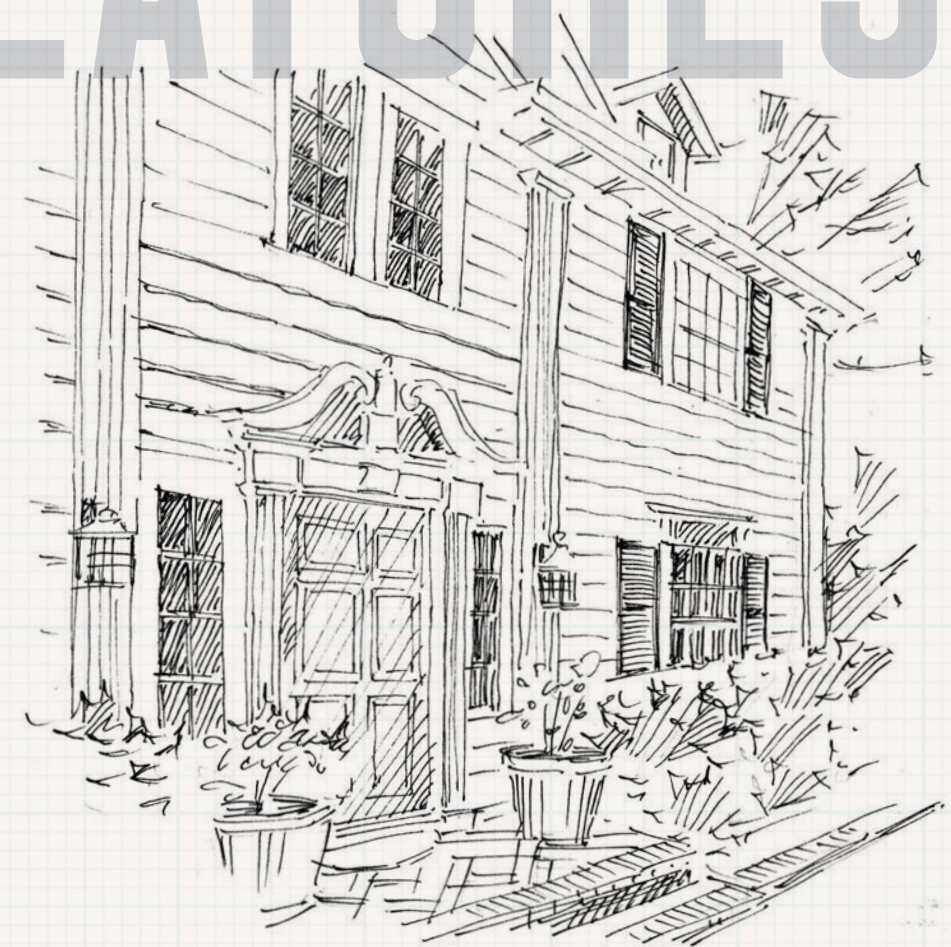
Symmetrical and evenly spaced, double-hung in standard grid patterns, often including dormers; shutters matching exterior window color.

## DOORS

Centered on facade, often framed by portico, flanked by sidelights or columns, topped with transom or fanlight.

## FACADES

Typically in brick or shingle, symmetrical or with intersecting masses.





SYMMETRY

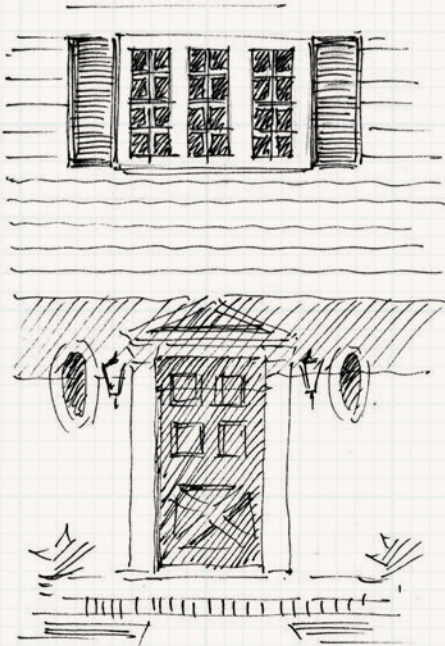
Both exterior and interior

PROMINENT CHIMNEYS

With traditional fireplaces

PITCHED ROOFS

With intersecting hips, topped with shingles



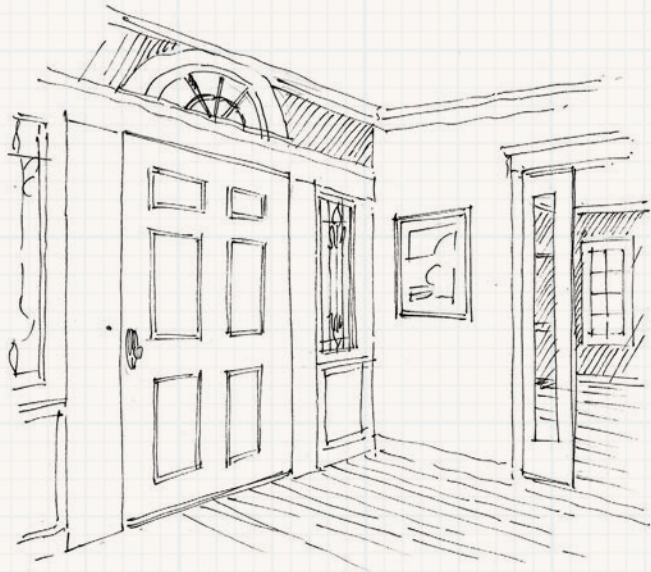
DECORATIVE MILLWORK

Crown molding, baseboards, chair rail, built-in shelving.

DECORATIVE METALWORK

Railings, grilles, banisters.

ARCHED INTERIOR CASEMENTS





# INSPIRATION



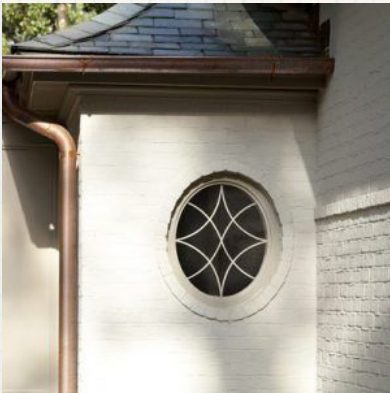
# & PRECEDENT



EXTERIOR FACADES







DETAILS AND INTERIORS

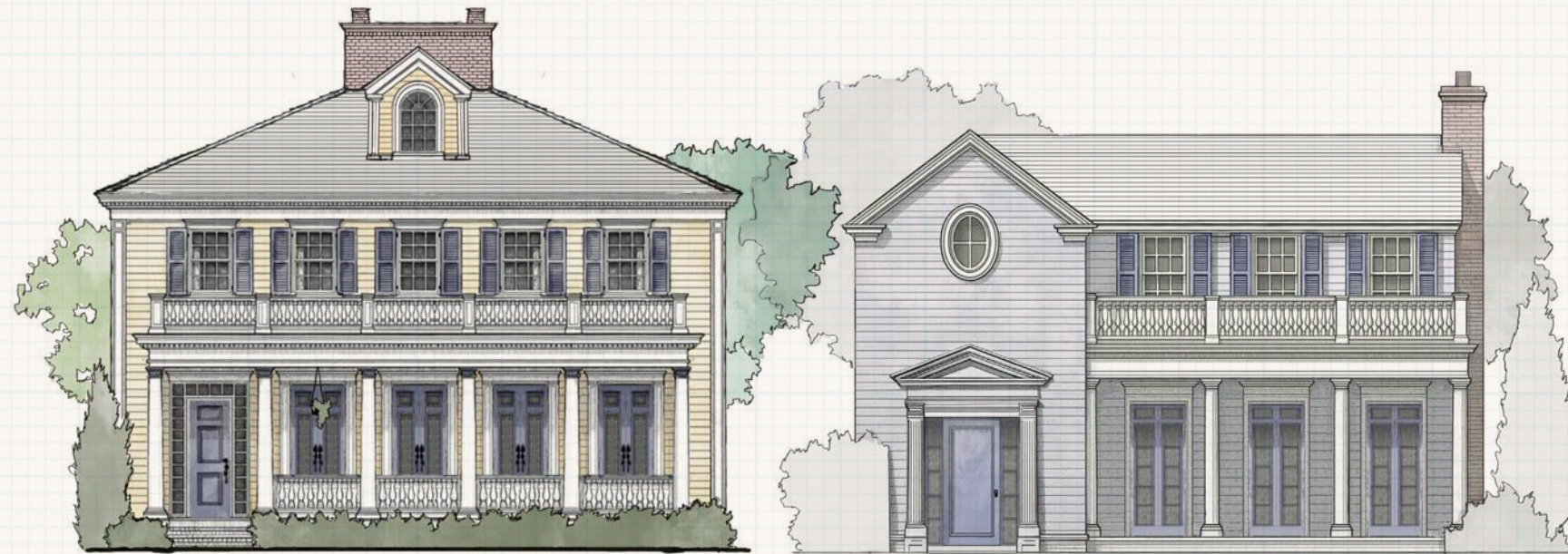


ELEMENTS & FIXTURES





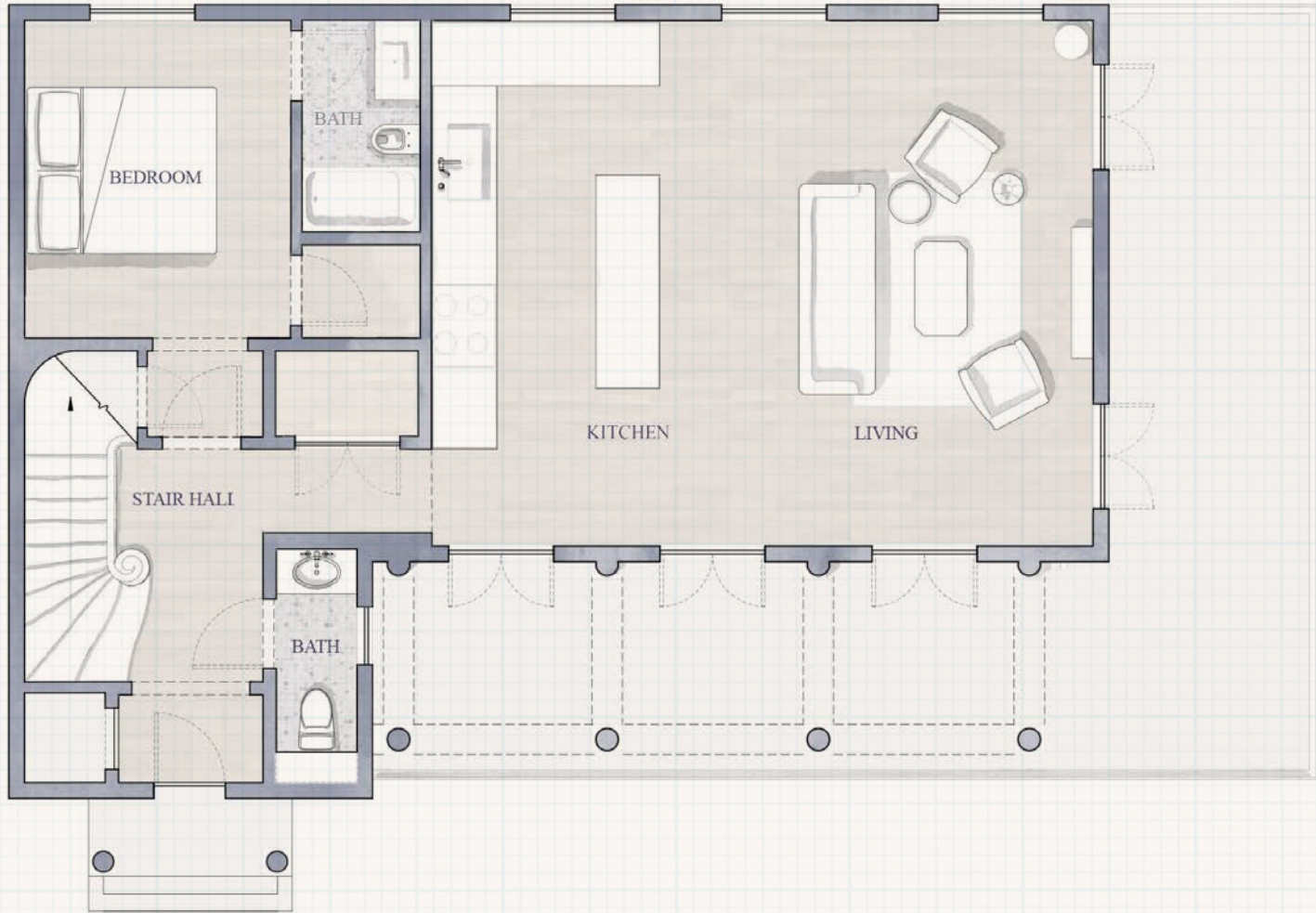
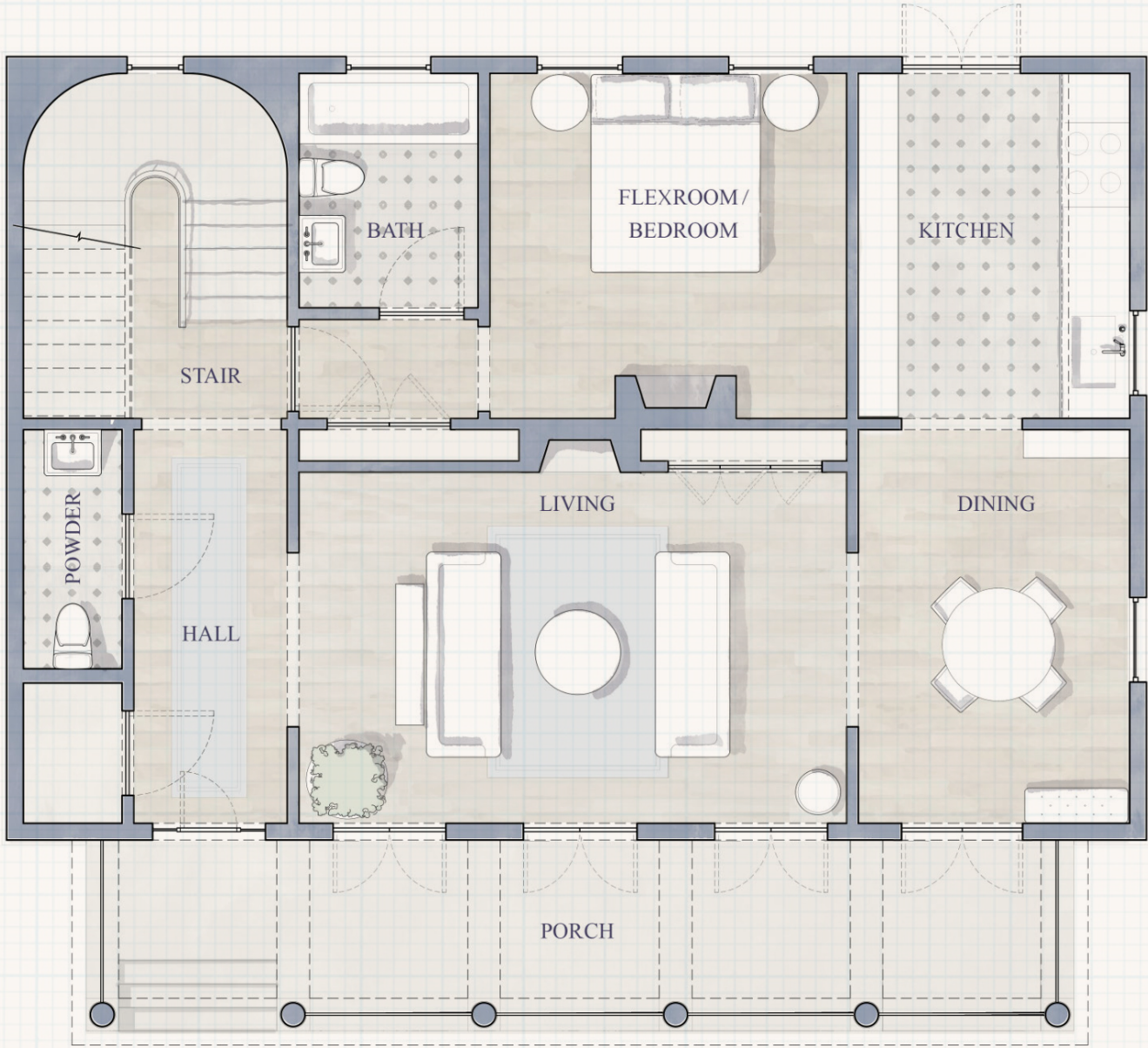
# DESIGN



# CONCEPTS









# LANDSCAPE



# CONCEPTS

LANDSCAPE ARCHITECT: BENNER REIBEL LANDSCAPE ARCHITECTS

COLONIAL REVIVAL: LANDSCAPE CONCEPTS

HARDSCAPE &  
GARDEN ELEMENTS



THE NEW CALIFORNIA CLASSICS



TREES & SHRUBS

*Largerstroemia Natchez*  
*Pittosporum Tobira Wheeler's Dwarf*  
*Boxwood*  
*Crape Myrtle*

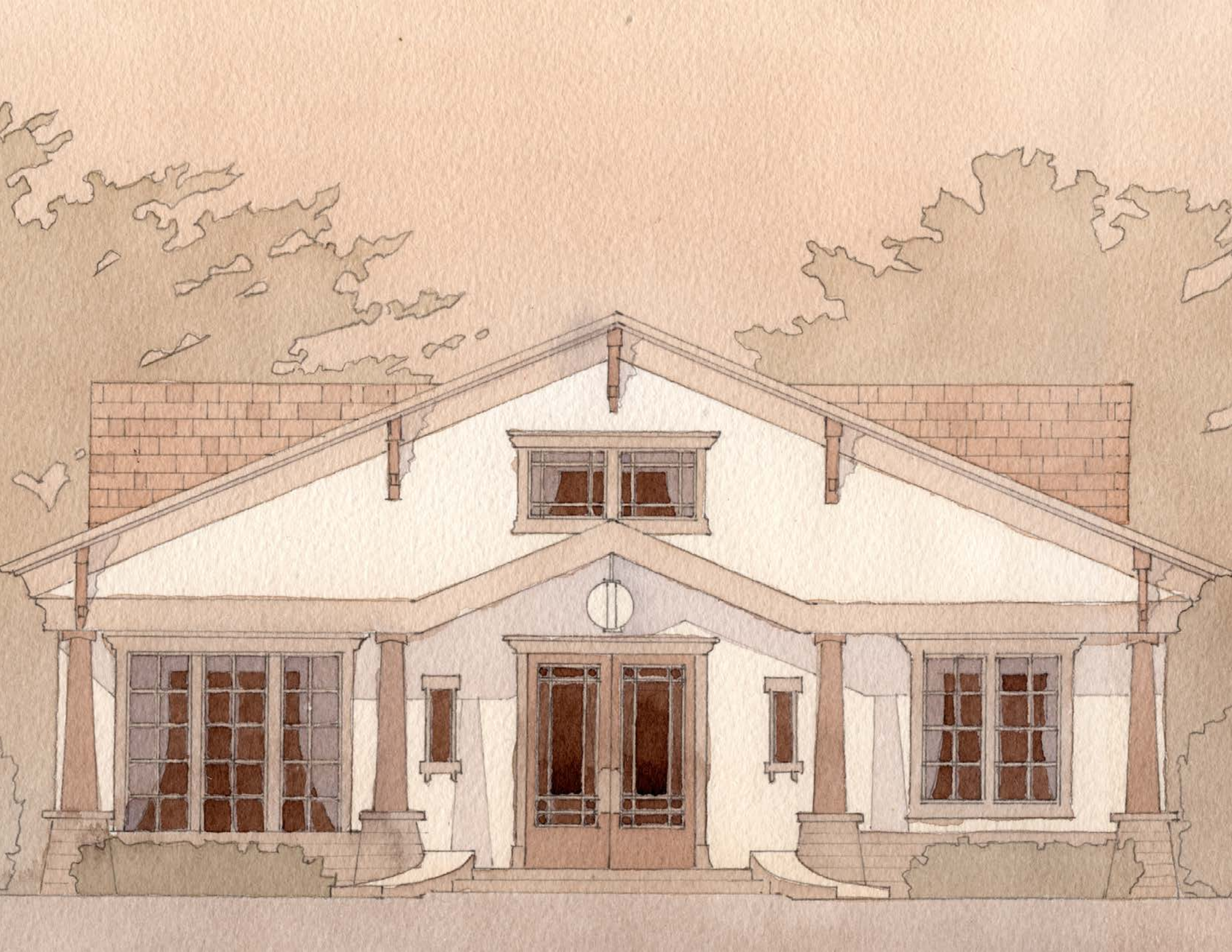


PLANTS

*Perovskia Atriplicifolia*  
*Evergreen Pear*  
*Crown Princess Margarita Rose*  
*Acanthus Mollis*  
*Honorine Jobert Japanese Anemone*  
*Munstead Wood Rose*







# CRAFTSMAN

ARCHITECTS & DESIGNERS	2025
RACHAEL GROCHOWSKI KELLY BECKEÄR JACK HILLBRAND ANDREW TULLIS	



# HISTORY

## ORIGINS

Proliferating from the early 20th century through the 1930s, Craftsman style homes are characterized by low-pitched, gabled roofs, exposed rafters, long covered porches, and use of wood siding, stucco, and natural stone accents. California's variants are primarily inspired by Charles Sumner Greene and Harry Mather Greene, architect brothers from Pasadena who defined the Craftsman style there (it became popular across America thanks to pattern books).

## HISTORICAL EXAMPLES

Gamble House by Greene & Greene

Jefferson Park, CA



Style 396 ~ Pacific Ready-Cut Home ~ Specifications



# KEY FEATURES

## ROOFS

Low-pitched, gabled, sometimes hipped, sometimes flared or peaked

## WINDOWS

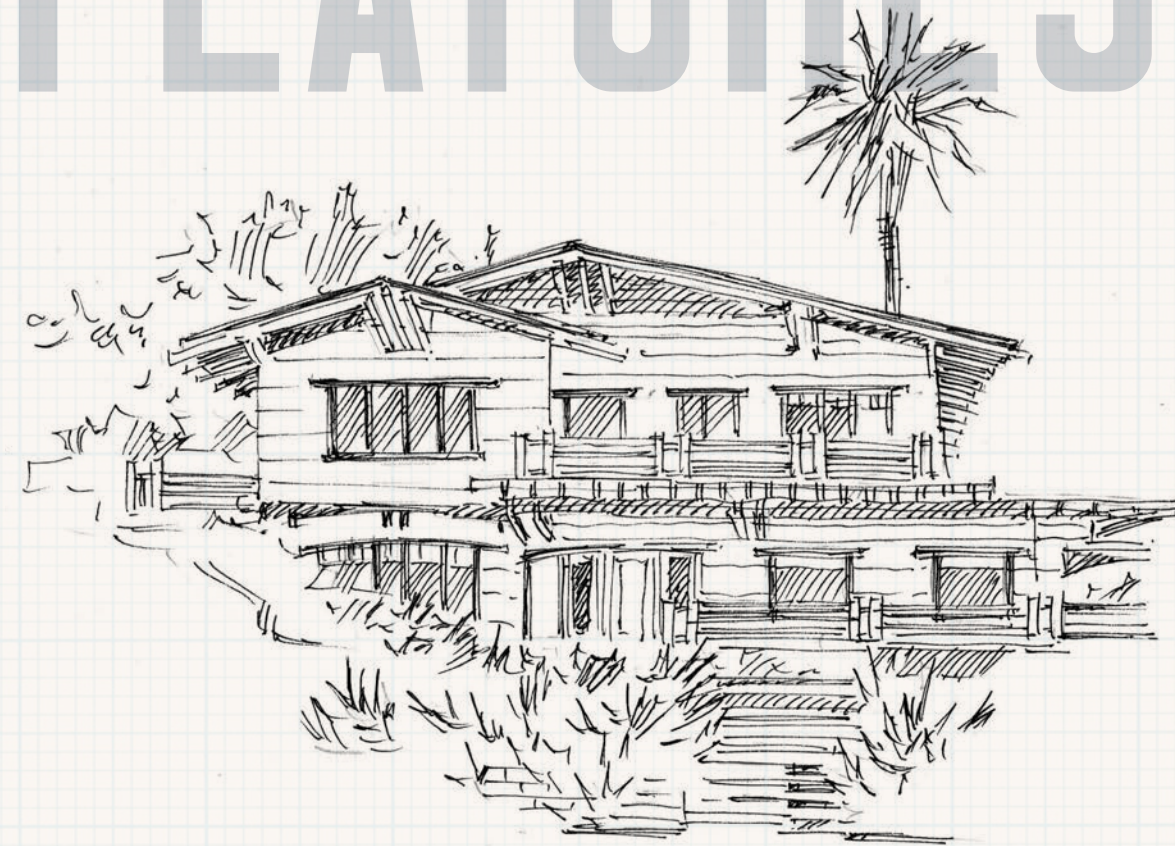
Large, often in leaded glass, sometimes featuring stained or art glass

## MULTIPLE PLANES

Rooflines intersecting, even on single story homes

## EXTERIOR

Shingle (painted or raw cedar) or stone; can be mixed





**WIDE PORCHES**

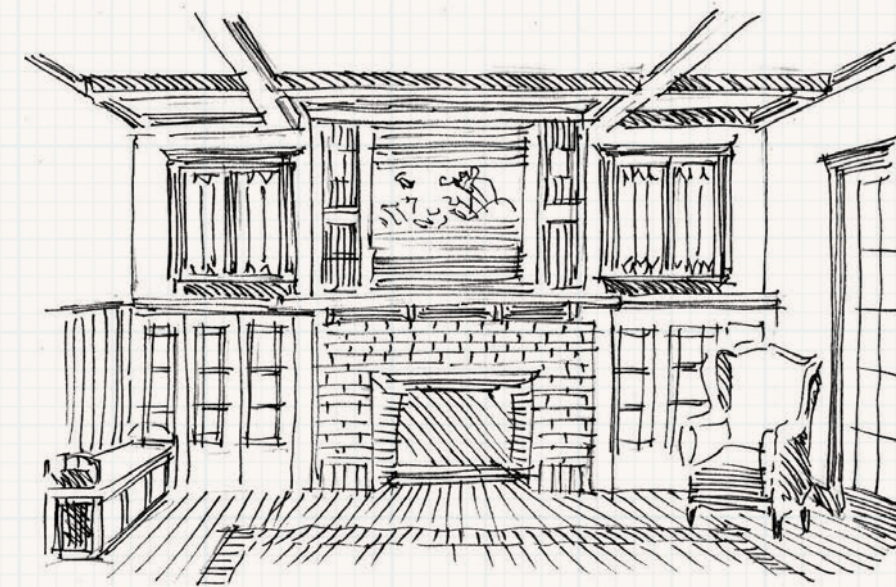
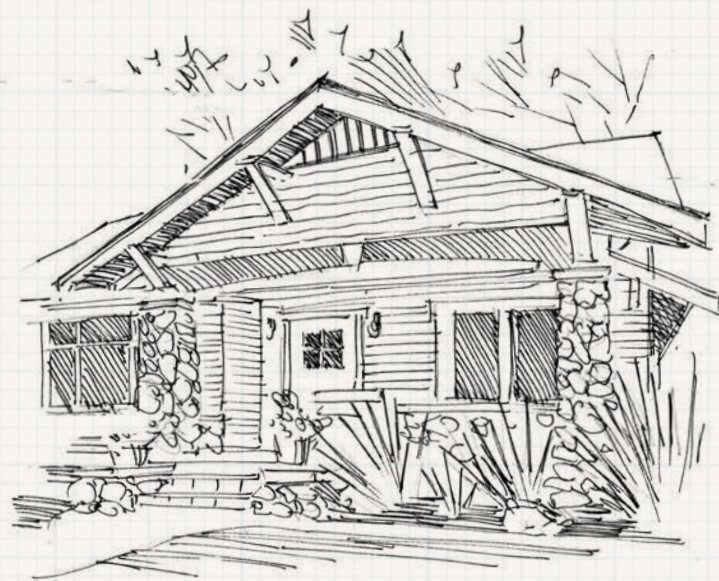
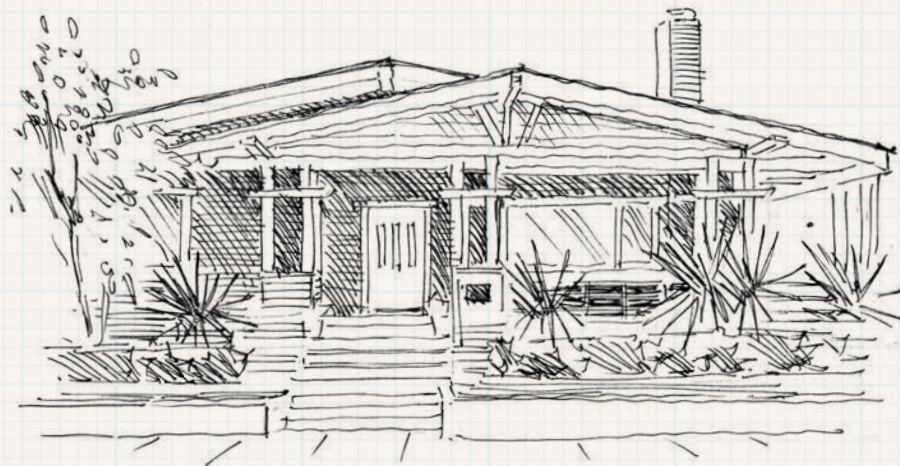
Often under exaggerated overhangs with exposed beams

**STONE CHIMNEYS**

Stone sometimes continued to lower foundation

**SUPPORT COLUMNS**

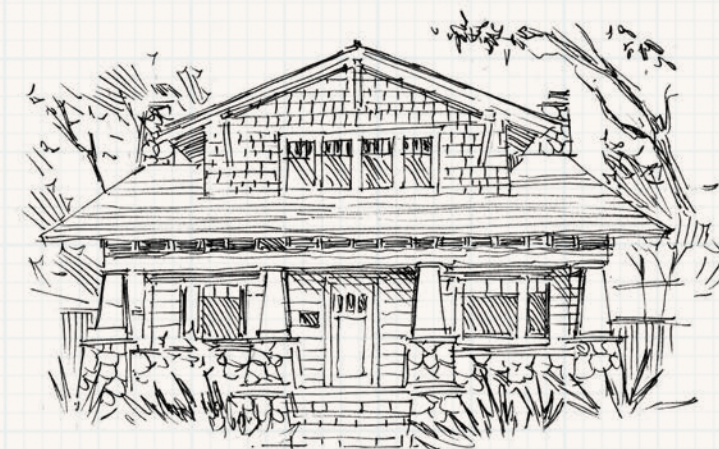
Heavy, tapered piers made of masonry or wood that support the roof

**DECORATIVE BEAMS & BRACES**

Sometimes false; including Swiss balustrades, Tudor false timbering

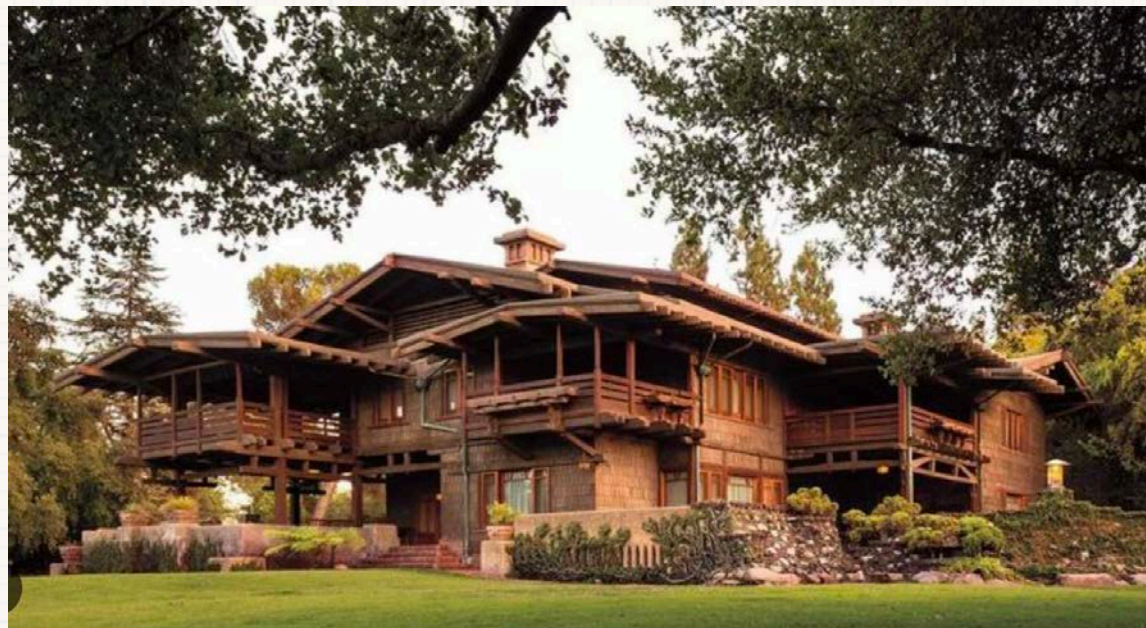
**INTERIORS**

Geometric or nature-inspired designs appear in lighting using materials like hammered copper, bronze, or wrought iron, and stained glass or mica shades for a diffused, warm glow.





# INSPIRATION



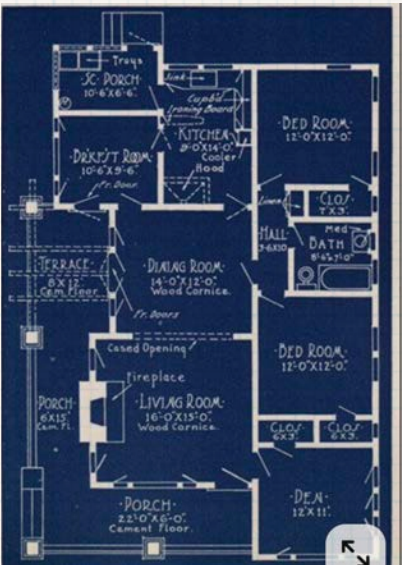
# & PRECEDENT

EXTERIOR FACADE

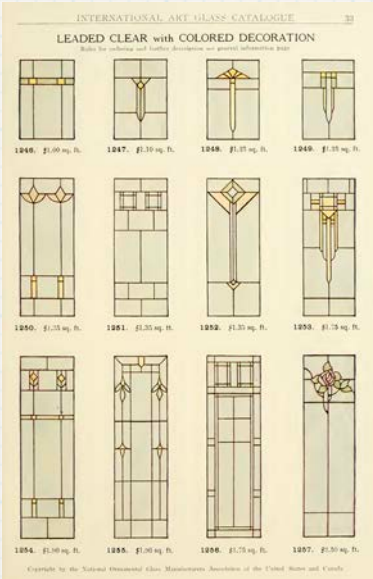




INTERIORS



FIXTURES & CERAMIC TILES





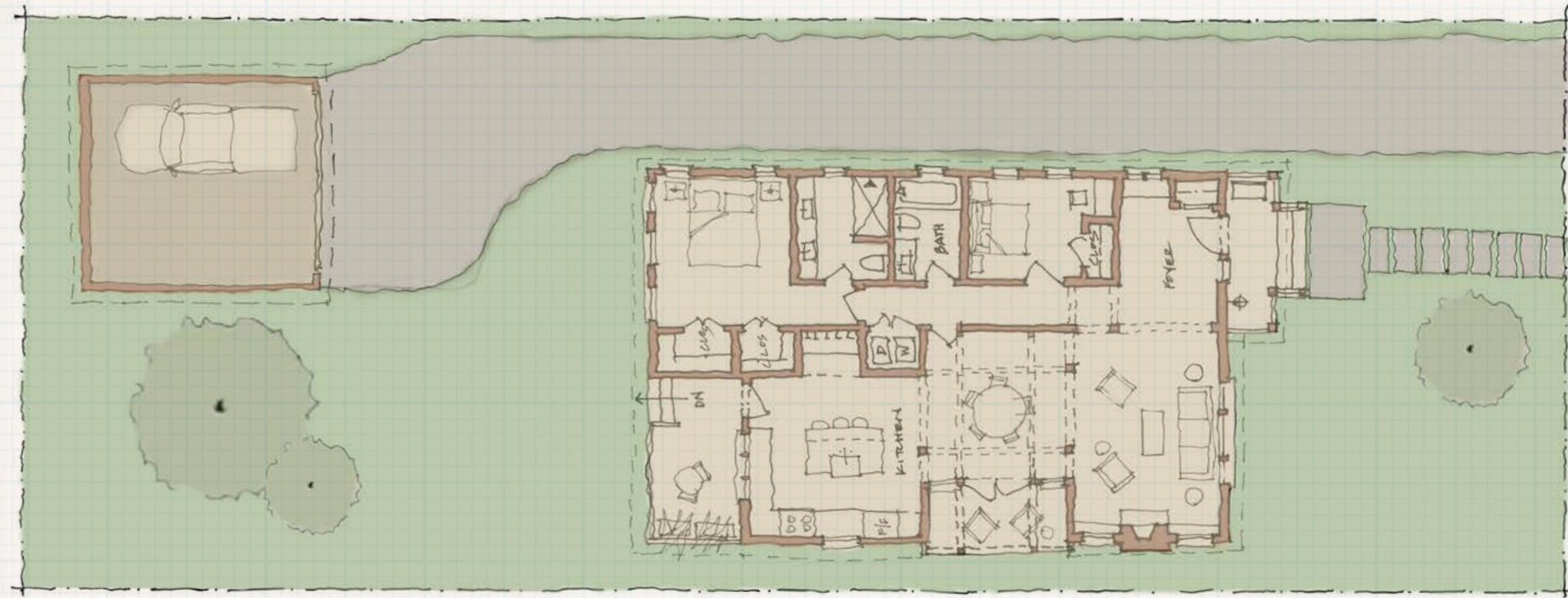
# DESIGN



# CONCEPTS

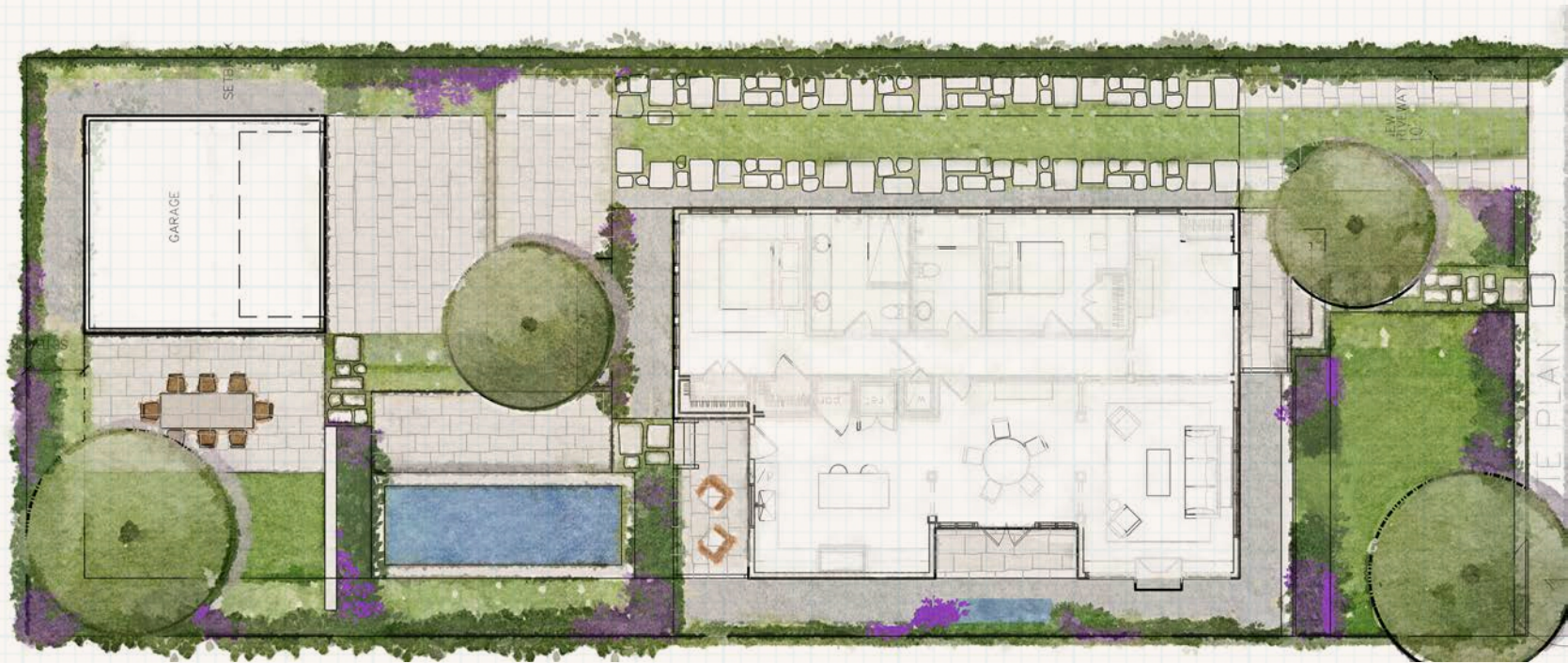








# LANDSCAPE



# CONCEPTS



HARDSCAPE &  
GARDEN ELEMENTS







TREES & SHRUBS

*Festuca Rubra*  
*Arbutus Marina*  
*Forest Pansy Redbud*  
*Buxus Green Gem*



PLANTS

*Lingularia Midnight Lady*  
*Artemisia Powis Castle*  
*Helleborus Lividus Crosicus*  
*Pelargonium Tomentosum*  
*Acanthus Mollis*  
*Bearded Iris Germanica*  
*Black Barlow Columbine*







# CALI COD

ARCHITECTS & DESIGNERS	2025
CHRISTY BLUMENFELD ANNE CARR SANDRA FOX TYLER DOWD STEVE RUGO	

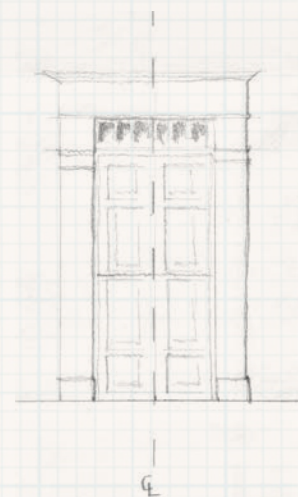
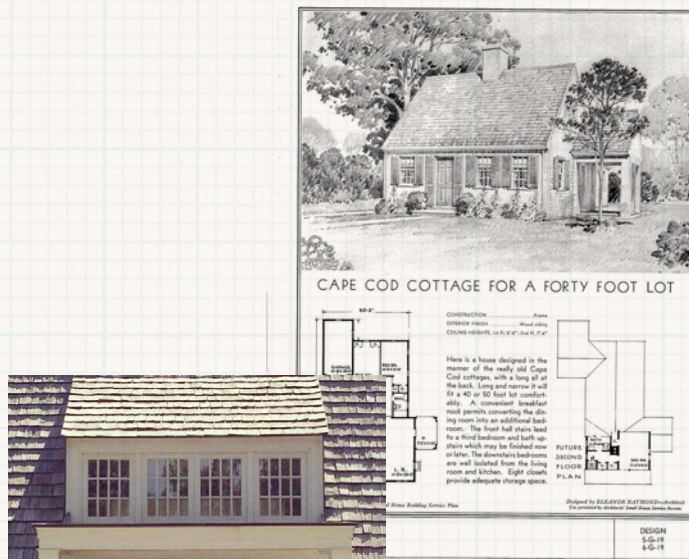


# HISTORY

# KEY FEATURES

## ORIGINS

Palisades Cali Cod architecture interprets the simple, colonial elements of traditional New England saltbox style homes for a west coast locale. Defined by simple, symmetrical facades, pitched roofs, dormer windows, shingle siding, and a natural palette, the California iteration of Cape Cod often incorporates stone, tile, more open layouts, and connectivity between indoors and out than its Eastern cousin.



## EXTERIORS

Typically symmetrical, single or double mass, central or side chimney.

## DOORS

Centrally placed to align with symmetry; simple design with occasional sidelight or transoms, typically six or eight panel, often framed by simple portico. Variations include Dutch and French doors.

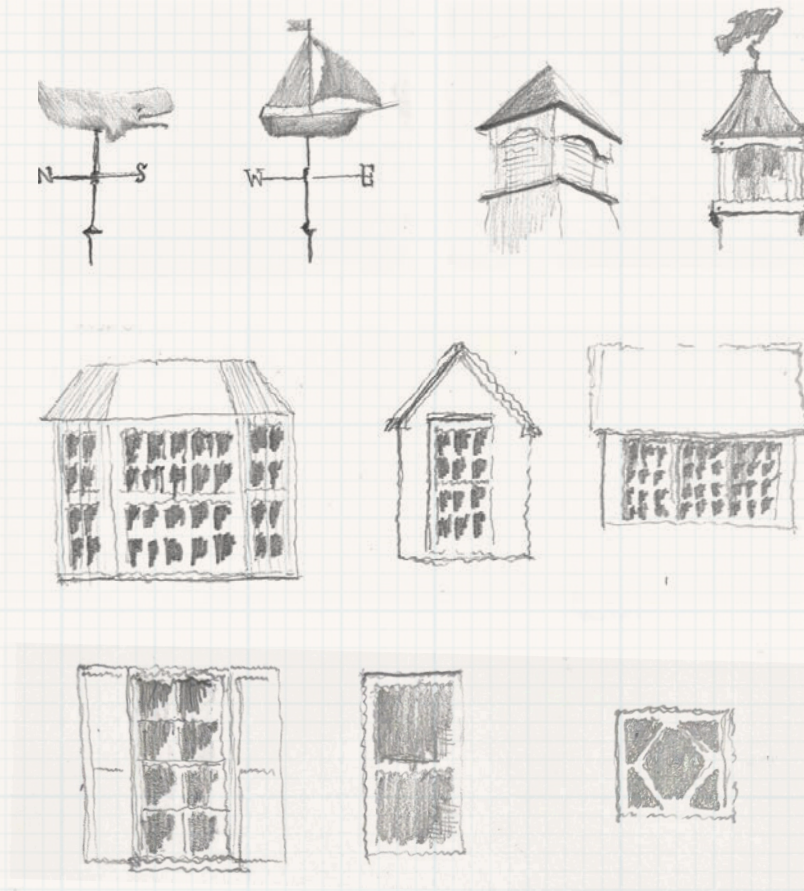
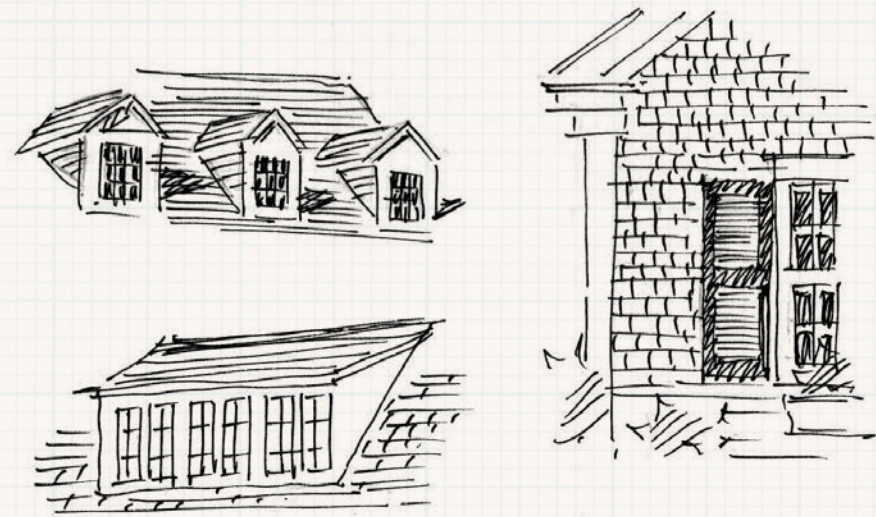


**DECORATIVE METALWORK**

Weather vanes, cupolas, gutters (copper)

**WINDOWS**

Double-hung casement windows with Colonial grilles (six panes over six panes); dormers, sash, and oriel windows also common; typically framed by shutters.

**WOOD SHINGLES****DECORATIVE MILLWORK**

Crown molding, baseboards, wainscoting, chair rail

**CHIMNEYS AND FIREPLACES**

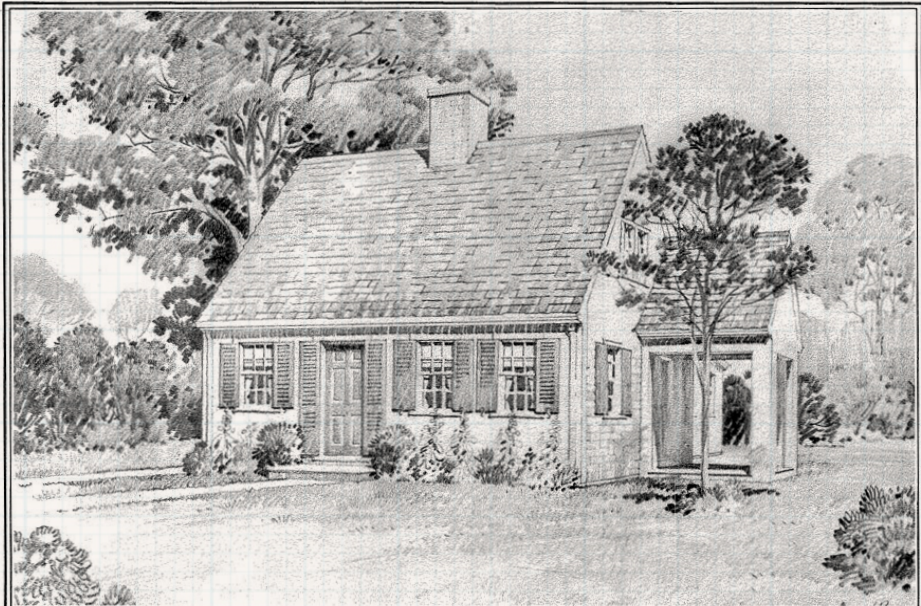
In brick or stone; large interior hearth areas (may be adapted to outdoor space)

**OPEN ROOMS**

Defining landscape design



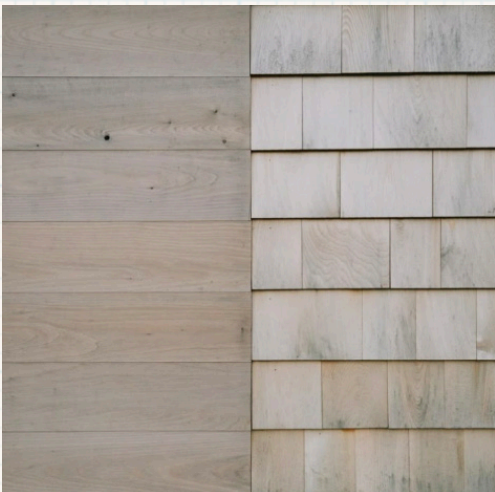
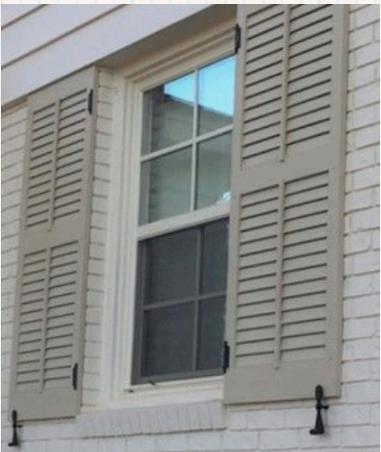
# INSPIRATION



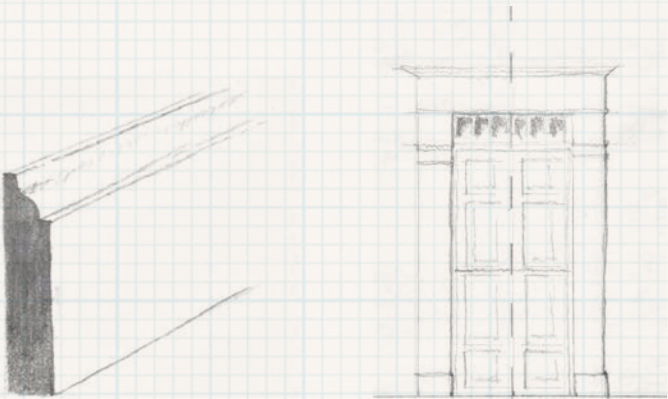
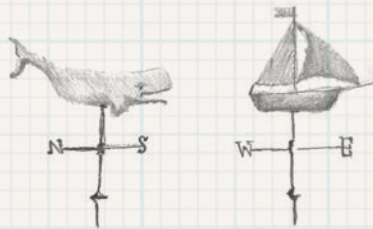
EXTERIOR FACADE



EXTERIOR FEATURES



MATERIALS & COLORS



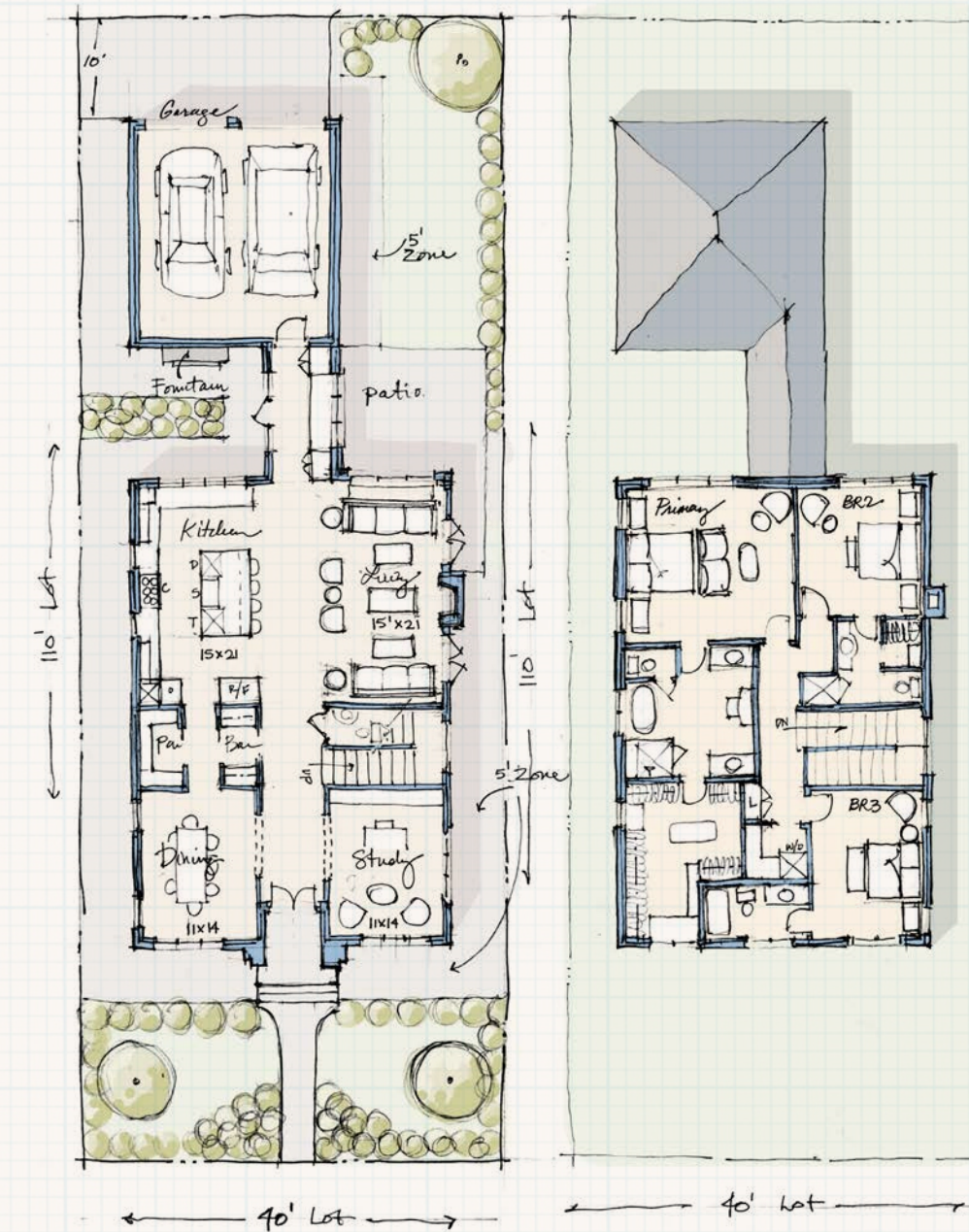


# DESIGN



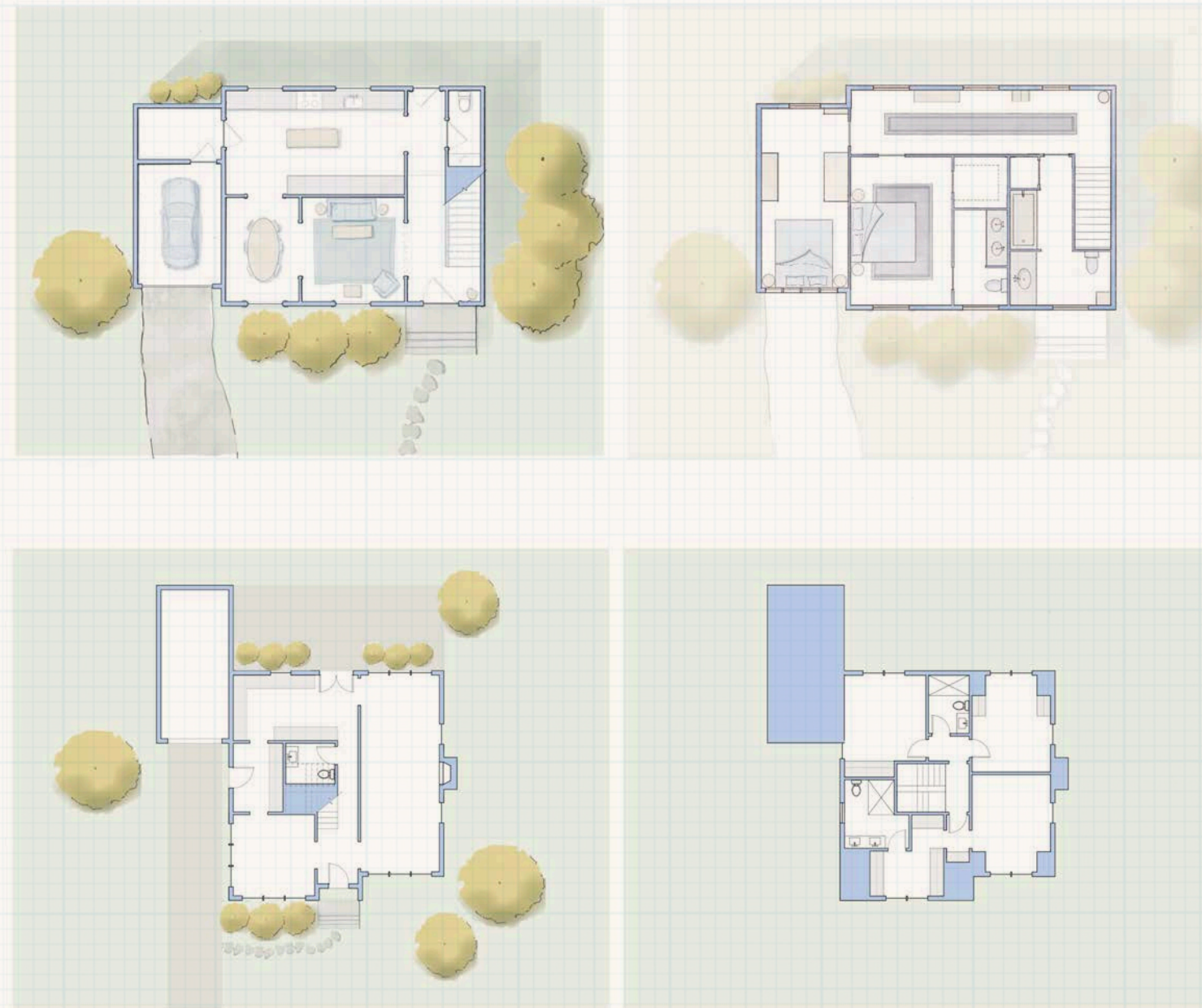
# CONCEPTS

CAPE COD: DESIGN CONCEPTS



THE NEW CALIFORNIA CLASSICS







# LANDSCAPE

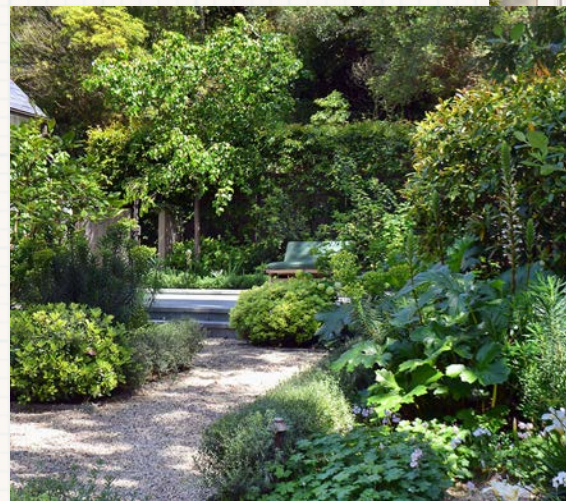


# CONCEPTS

LANDSCAPE ARCHITECT: BENNER REIBEL LANDSCAPE ARCHITECTS

CAPE COD: LANDSCAPE CONCEPTS

## HARDSCAPE & GARDEN ELEMENTS



THE NEW CALIFORNIA CLASSICS





TREES & SHRUBS

*Apple Tree*  
*Geigera Parviflora*  
*Cercis Canadensis*  
*Boxwood*



PLANTS

*Nepata*  
*Hydrangea Paniculata Limelight*  
*Westringia Blue Gem*  
*Gaura Lindheimeri*  
*Santolina Viridis*  
*Campanula Poscharskyana*







# SPANISH REVIVAL

ARCHITECTS & DESIGNERS	2025
ANDREW SCOTT EDDIE MAESTRI ELIZABETH DINKEL DEBORAH COSTA	



# HISTORY

## ORIGINS

Popular between 1910 and 1940, Spanish Revival architecture borrows elements of Moorish, Mediterranean, Gothic, and Byzantine elements evident in Spanish architecture; unsurprisingly, it's most common in states with heavy Spanish history (California, Texas, Florida). It shares characteristics with the earlier Mission coupled with inspiration from Spanish Colonial buildings worldwide. The movement was further bolstered by architects studying in Spain during World War I.

## HISTORICAL EXAMPLES

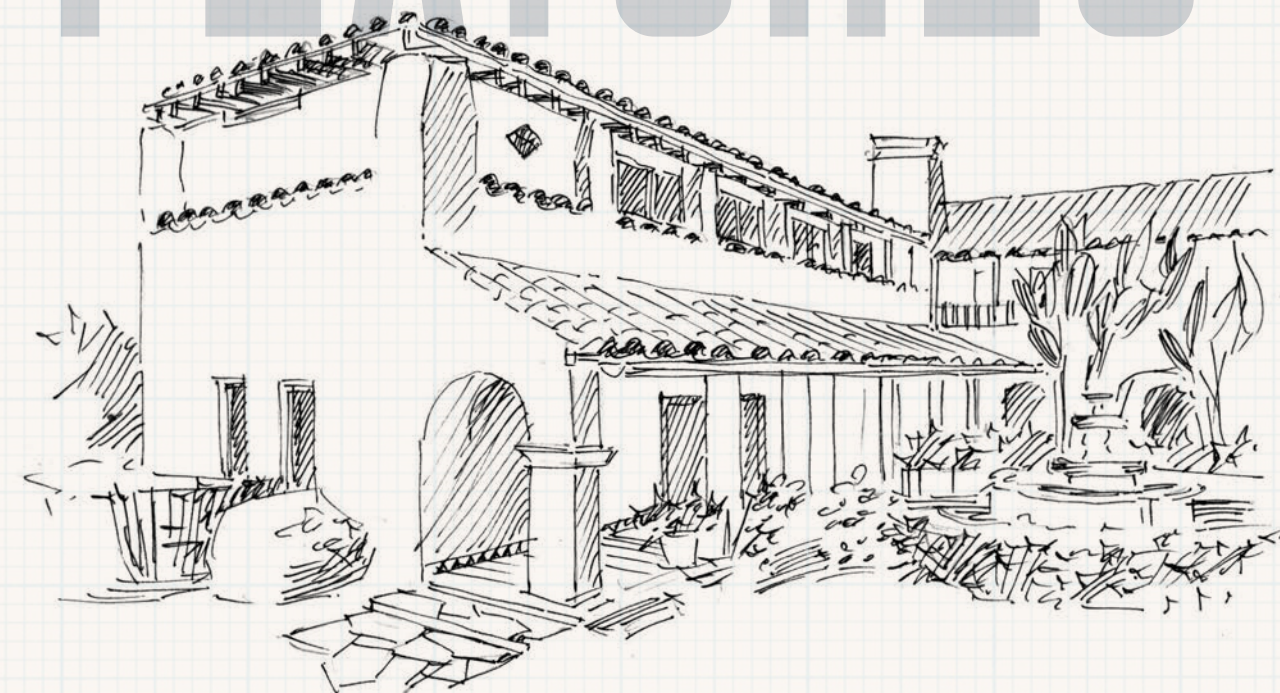
Dieterich House by Addison Mizner

Bliss House by Carleton Winslow, Sr.

George Washington Smith in Southern California



# KEY FEATURES



## ROOFS

Low-pitched, often tiled with terra cotta, hipped, gabled, or cross-gabled.

## DOORS

Wide range, from arched to wood plank and paneling to double sash.

## EXTERIOR

Tile or stucco, multi-mass.

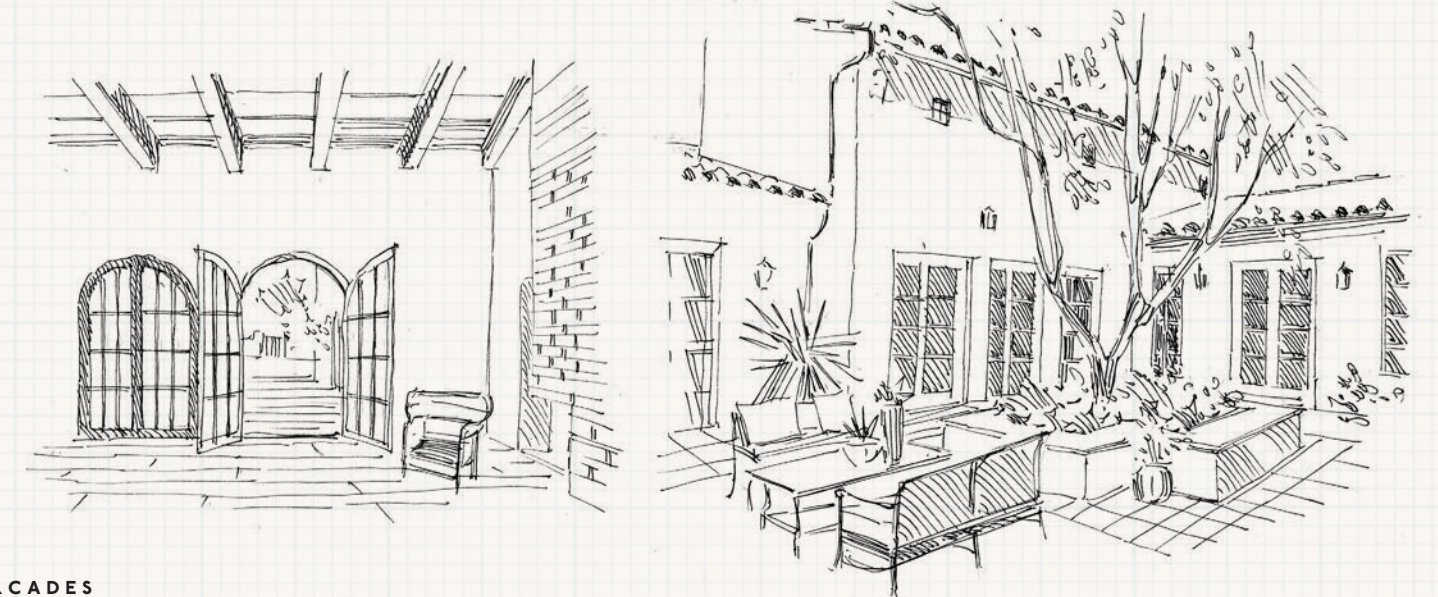
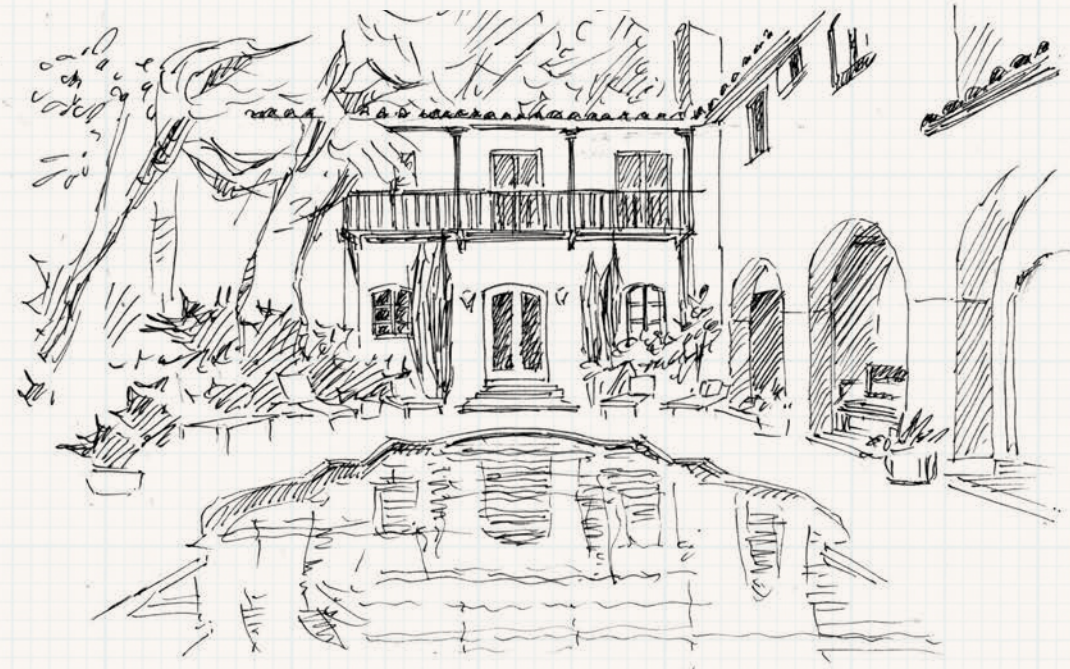
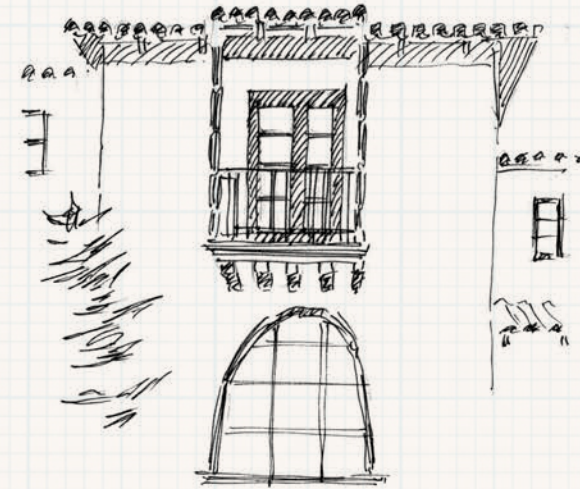


**DECORATIVE DOOR AND WINDOW FEATURES**

Including balconets, metal and wood grilles, spiraled columns, and low-relief ornamentation.

**ARCHES**

Ranging in scale and shape.

**WINGED WALLS AND ARCADES**

Extending the primary structure

**CENTRAL COURTYARDS**

Outfitted with decorative metalwork, fountains, and tiles.



# INSPIRATION



# & PRECEDENT

SPANISH REVIVAL: INSPIRATION & PRECEDENT



EXTERIOR FACADE

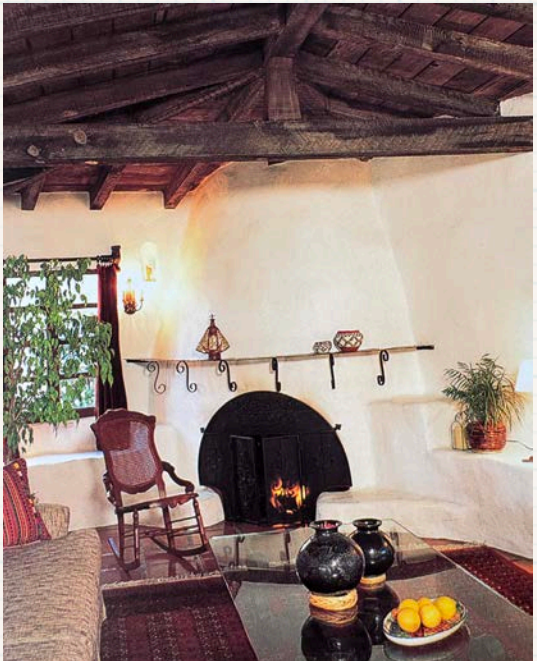
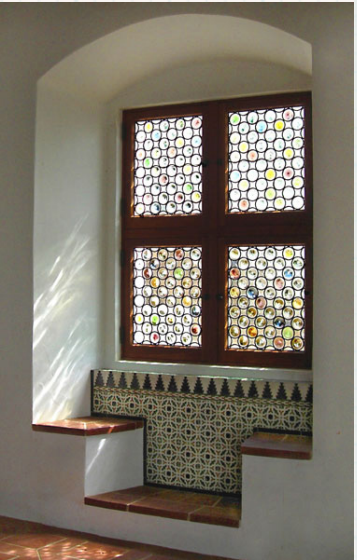


THE NEW CALIFORNIA CLASSICS



INTERIORS & COURTYARDS

NATURAL MATERIALS, CERAMIC TILES



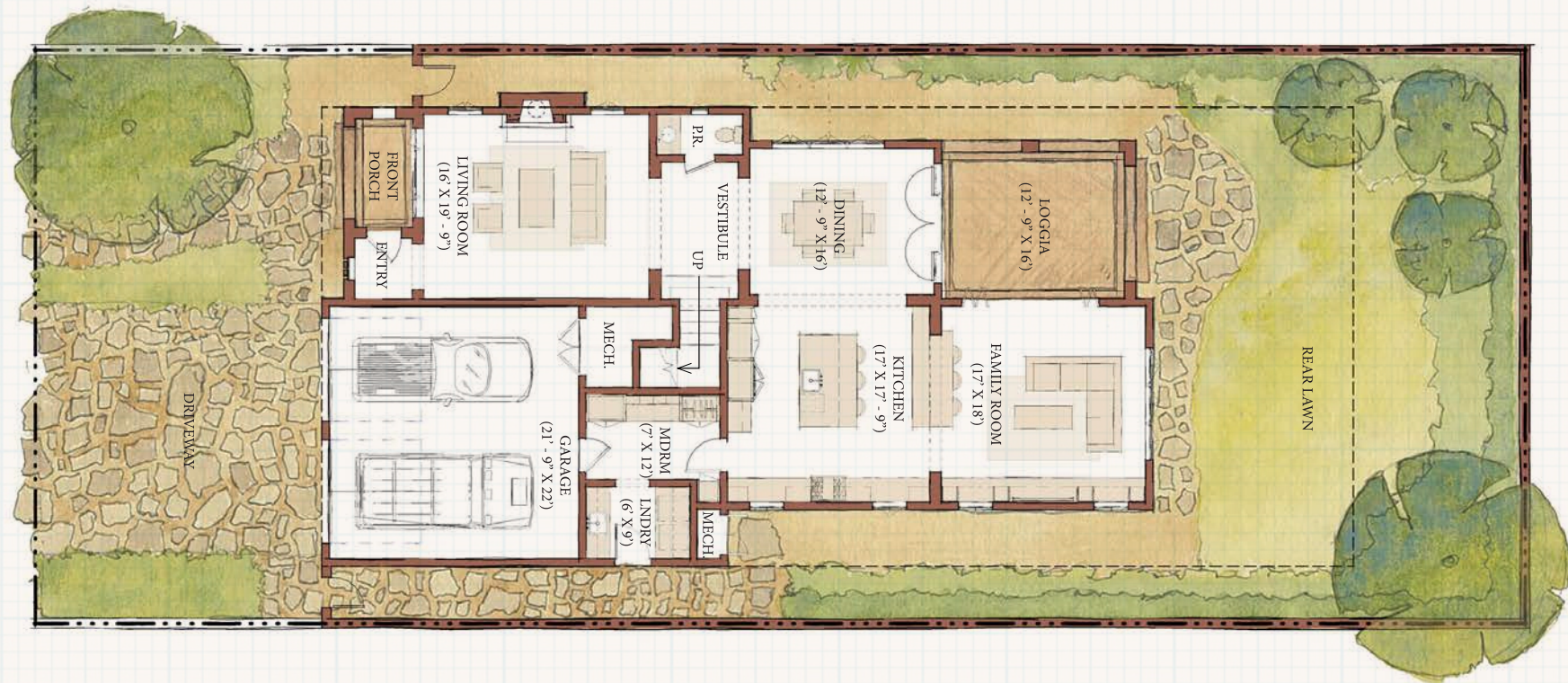


# DESIGN



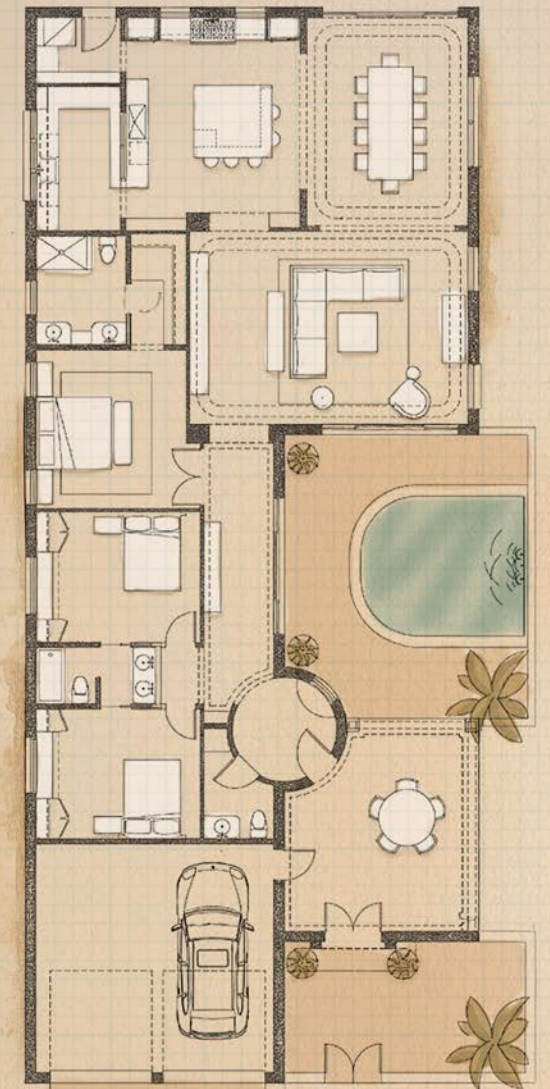
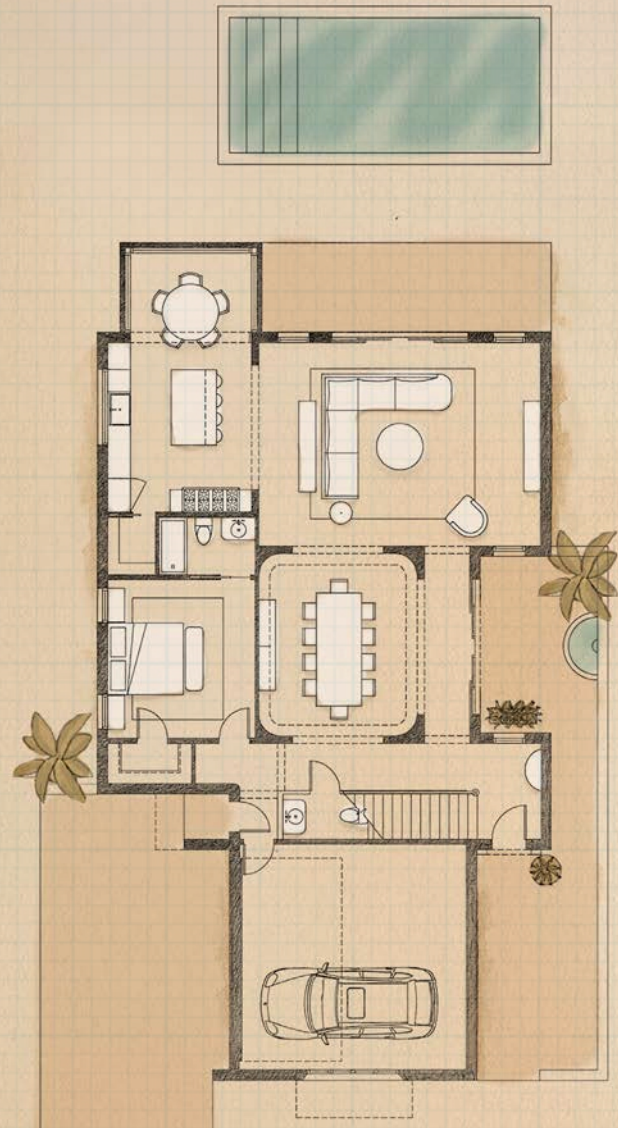
# CONCEPTS

SPANISH REVIVAL: DESIGN CONCEPTS (ANDREW SCOTT - APPLETON ARCHITECTS)



THE NEW CALIFORNIA CLASSICS







# LANDSCAPE



# CONCEPTS

## HARDSCAPE & GARDEN ELEMENTS







TREES & SHRUBS

*Lemon Tree*  
*Dracaena Draco*  
*Fruitless Olive Tree*  
*Agave Americana*  
*Agave Boutin Blue*



PLANTS

*Lavandula Intermedia*  
*Heliotrichon Sempervirens*  
*Kalanchoe Beharensis*  
*Artemisia Powis Castle*  
*Melaleuca Nesophila*





# STORYBOOK

ARCHITECTS & DESIGNERS	2025
GEDDES ULINSKAS CARLOS A FLORES MICHELE TROUT RACHEL SIEGEL	



# HISTORY

## ORIGINS

Gaining popularity in California in the 1920s, Storybook Cottage style presented a more casual take on a highly romanticized medieval European cottage presented in films and fairy tales. Its whimsical, nostalgic look gained popularity in a postwar culture, as suburban expansion came to define American design. In California, specifically, the influence of set design pushed boundaries with playful details and irregular scale.

## HISTORICAL EXAMPLES

Spadena House by Harry Oliver

Snow White Cottages by Ben Sherwood

Charlie Chaplin Studios by Meyer & Holler



# KEY FEATURES

## ROOFLINES

Steeply pitched, often with uneven or rolled eaves to mimic thatched roofs.

## DOORS

Arched or irregularly shaped, constructed from heavy wood with iron hardware.

## WALLS

Stucco or stone finishes, occasionally featuring half-timbering reminiscent of Tudor styles.





**STEEP SLOPES**

Typically a 12/12 pitch or higher, contributing to the dramatic silhouette.

**CURVED OR ROLLED EAVES**

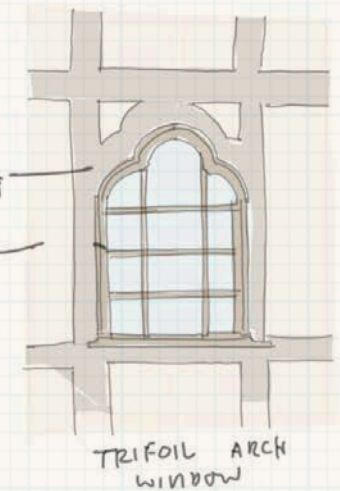
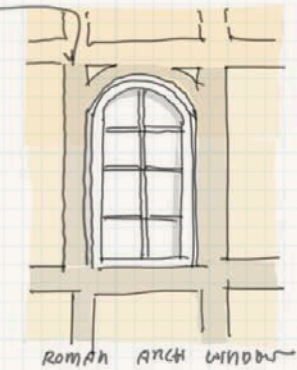
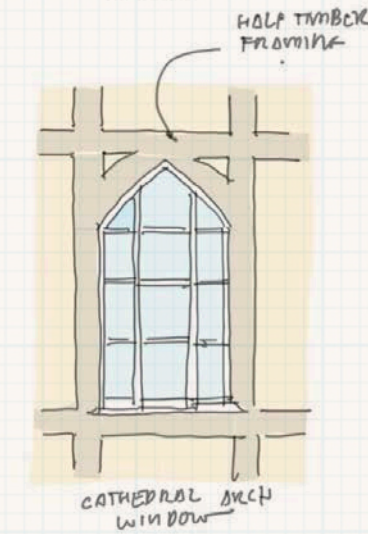
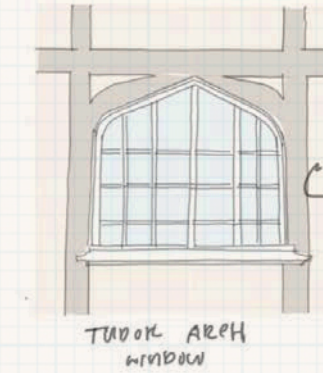
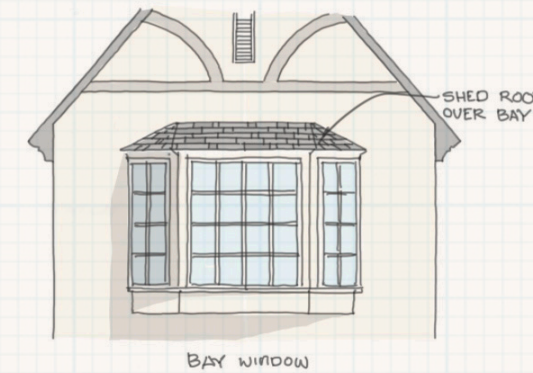
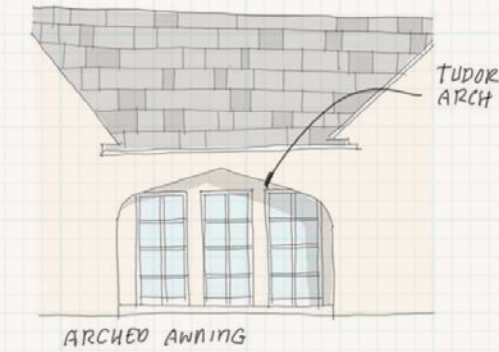
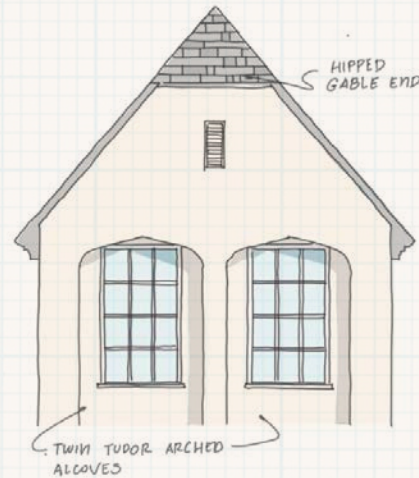
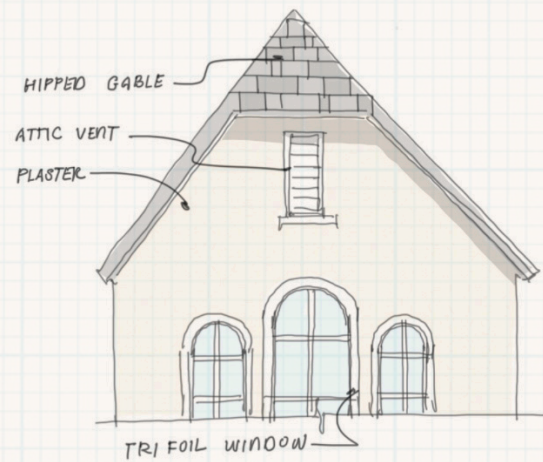
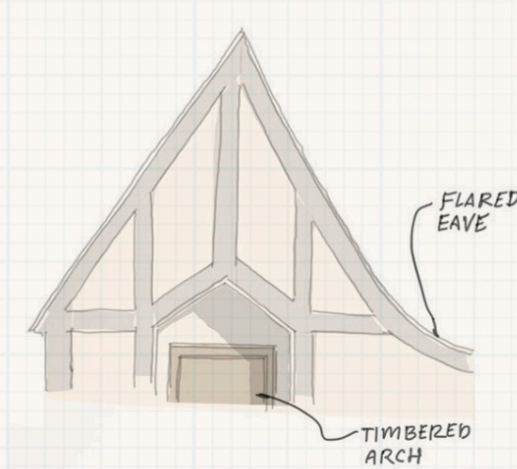
Mimicking the appearance of thatched roofs.

**CHIMNEYS**

Steeply pitched, often with uneven or rolled eaves to mimic thatched roofs.

**ASYMMETRICAL DESIGNS**

Including catslide roofs that extend close to the ground.

**WINDOWS**

Leaded glass panes, arched or eyebrow-shaped, often asymmetrically placed.

**DECORATIVE SHINGLES**

Often with wave patterns or varied textures.

**MATERIALS**

Natural stone, wood, and stucco, often combined to enhance the handcrafted appearance.



# INSPIRATION



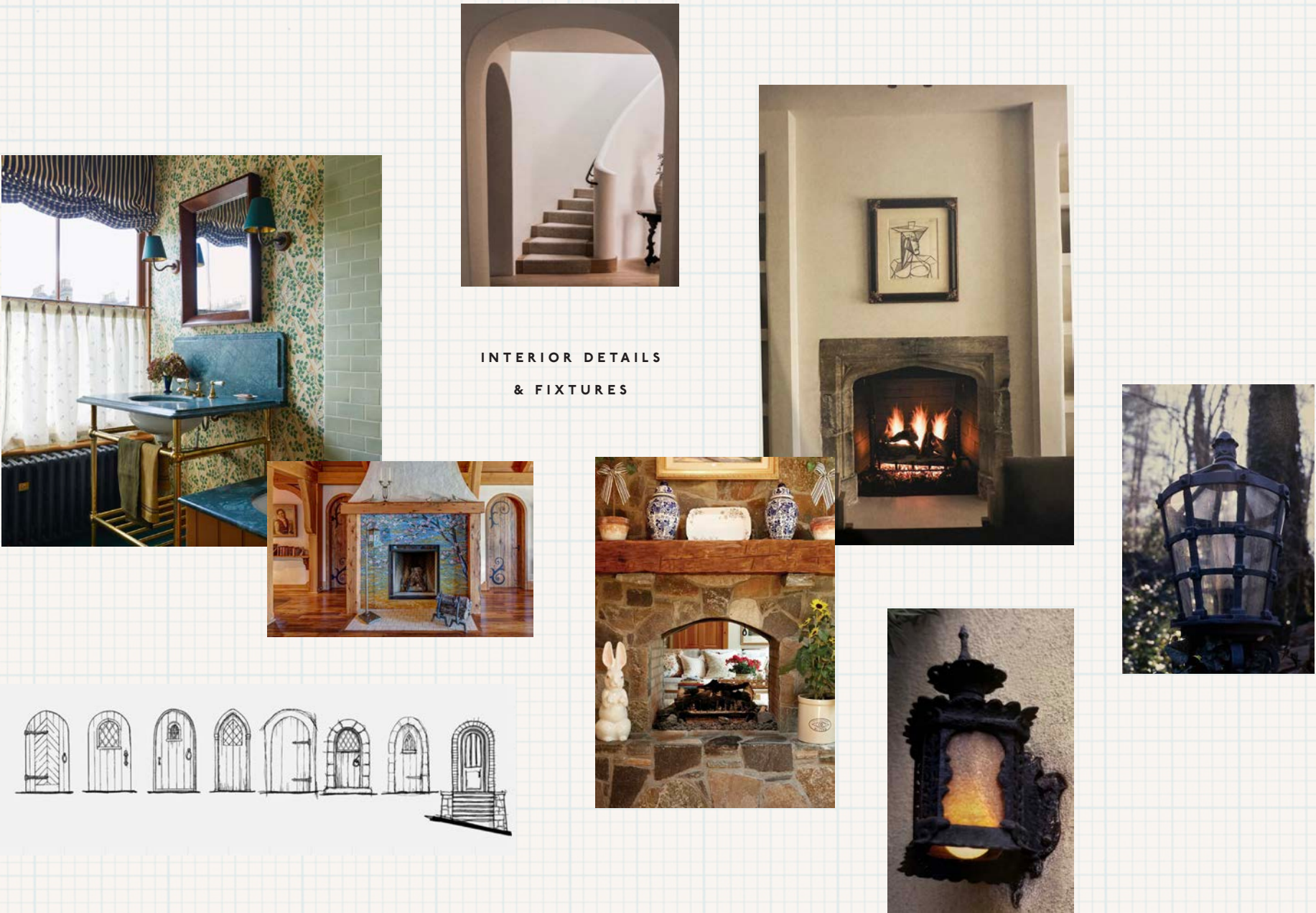
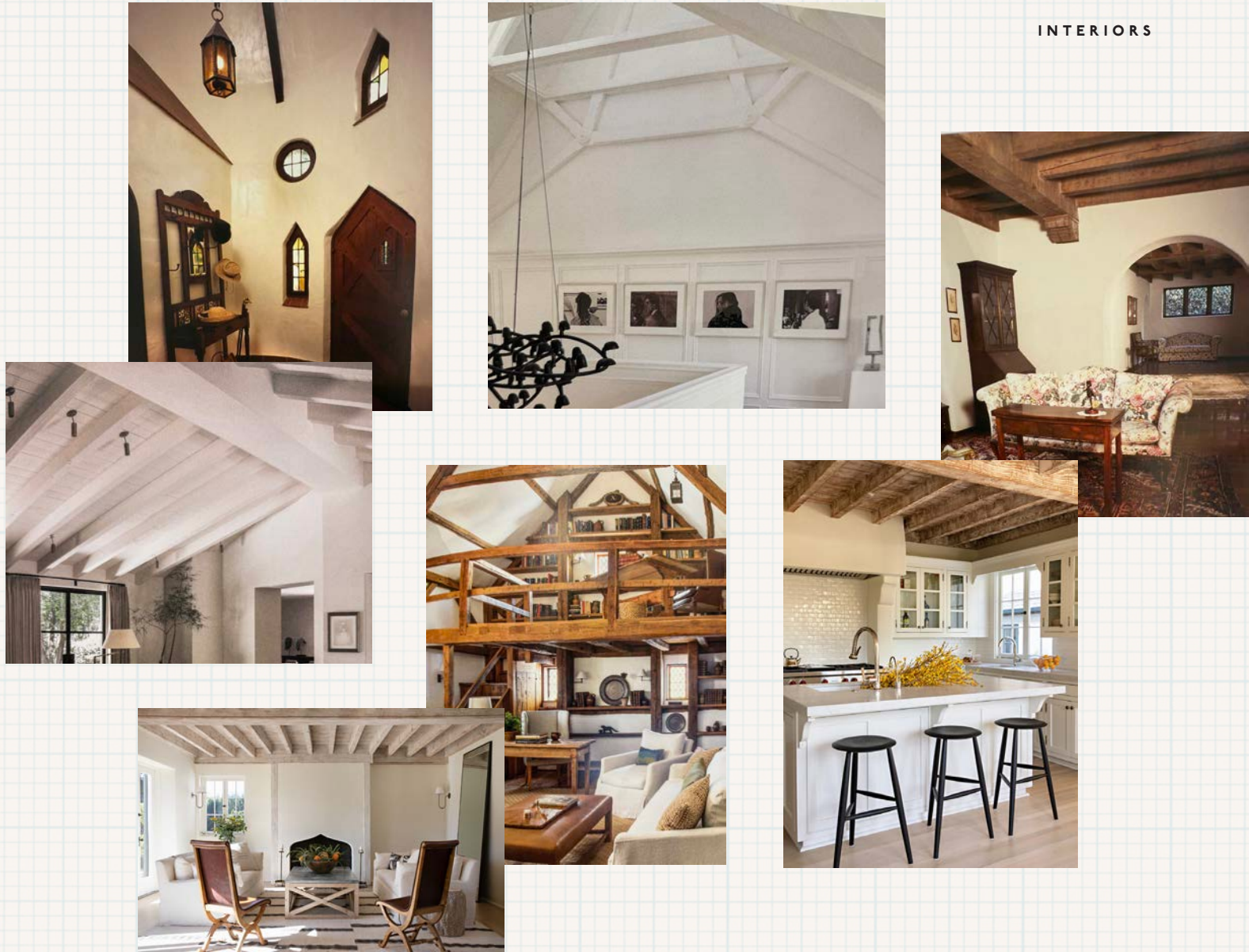
EXTERIOR FACADE

# & PRECEDENT



INTERIORS

INTERIOR DETAILS  
& FIXTURES

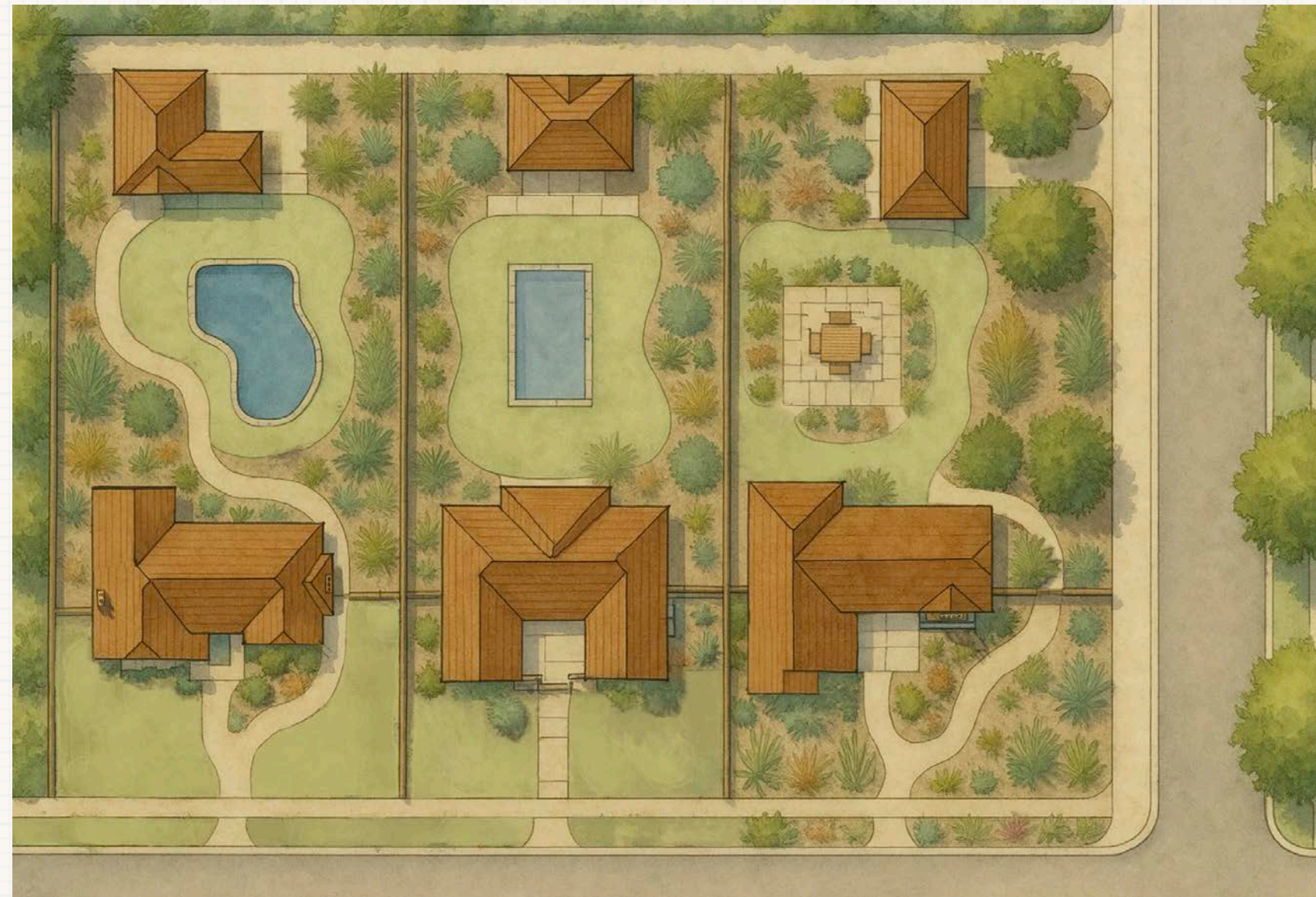




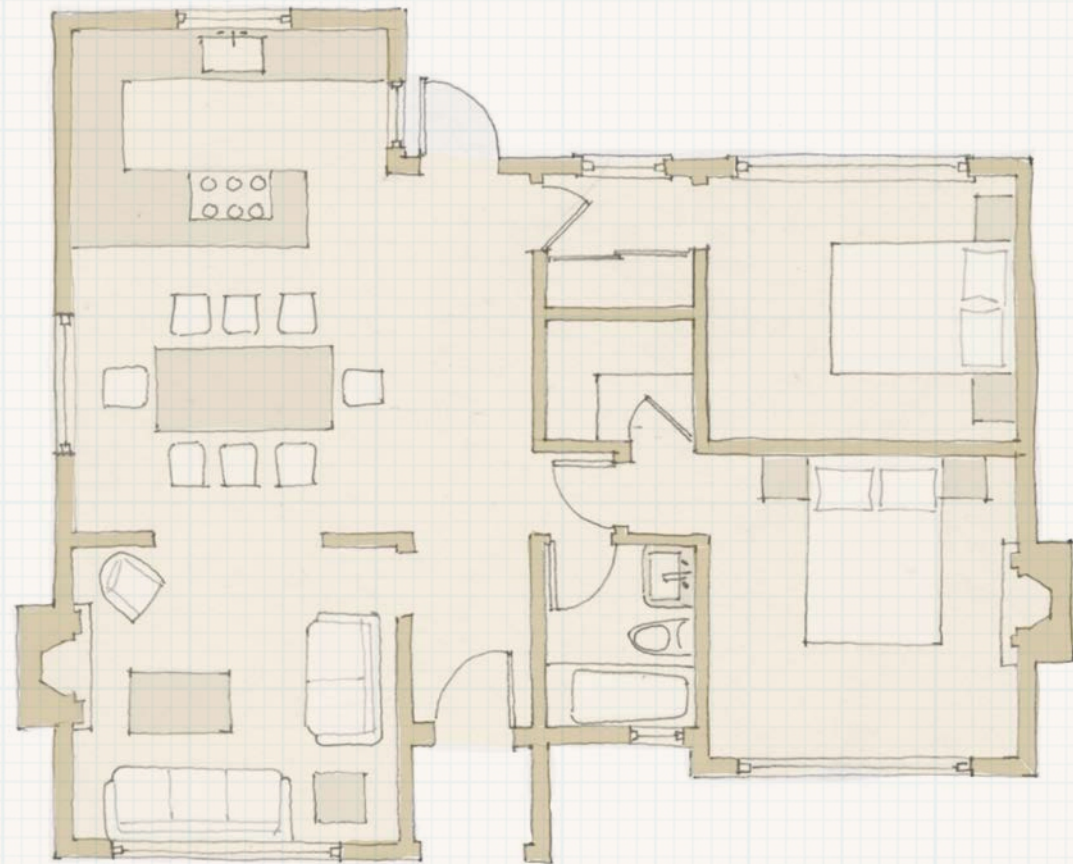
# DESIGN



# CONCEPTS

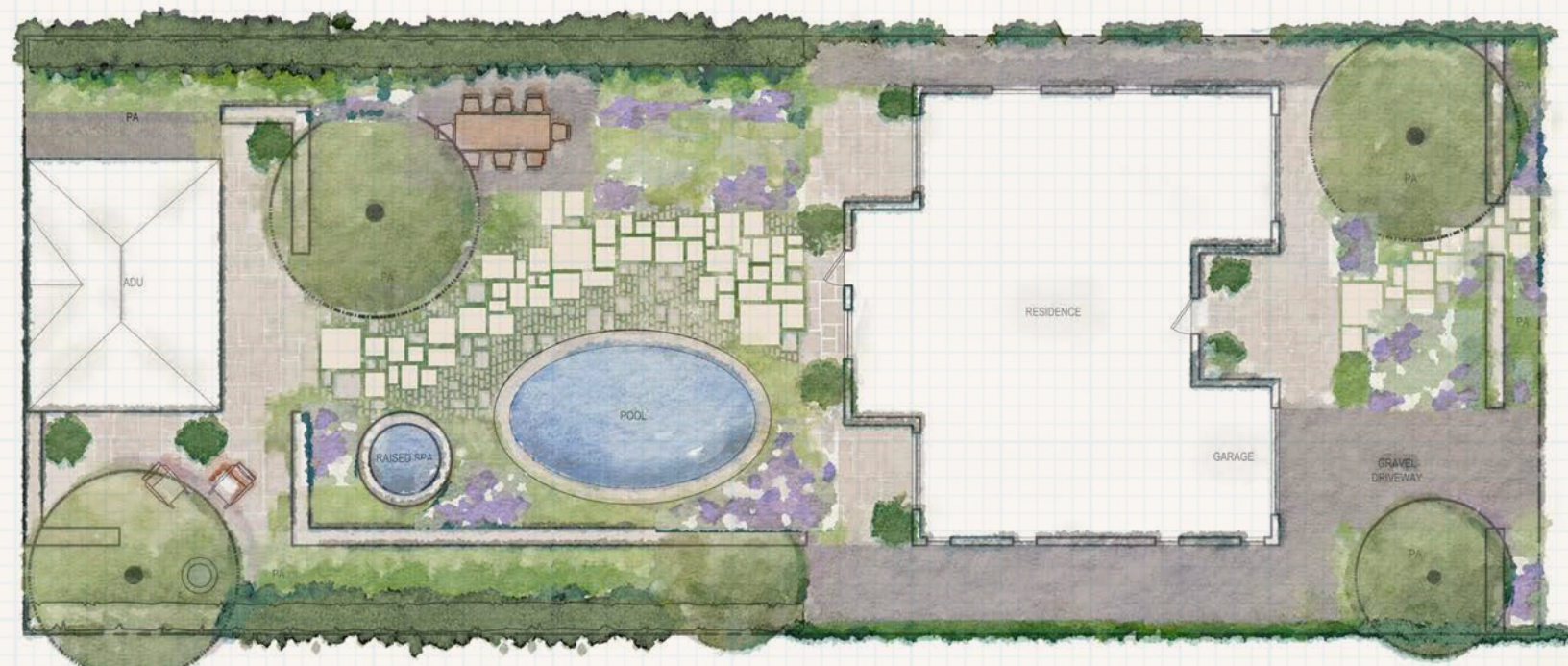








# LANDSCAPE



# CONCEPTS

LANDSCAPE ARCHITECT: BENNER REIBEL LANDSCAPE ARCHITECTS

STORYBOOK: LANDSCAPE CONCEPTS

## HARDSCAPE & GARDEN ELEMENTS



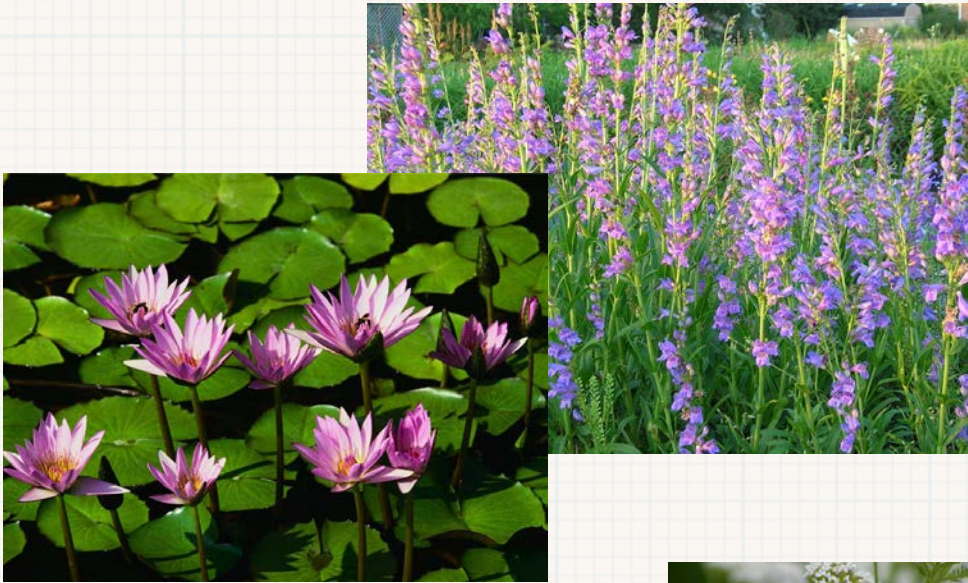
THE NEW CALIFORNIA CLASSICS





TREES & SHRUBS

*Ginkgo Biloba*  
*River Birch*  
*Pittosporium Tobira* *Wheeler's Dwarf*  
*Boxwood*

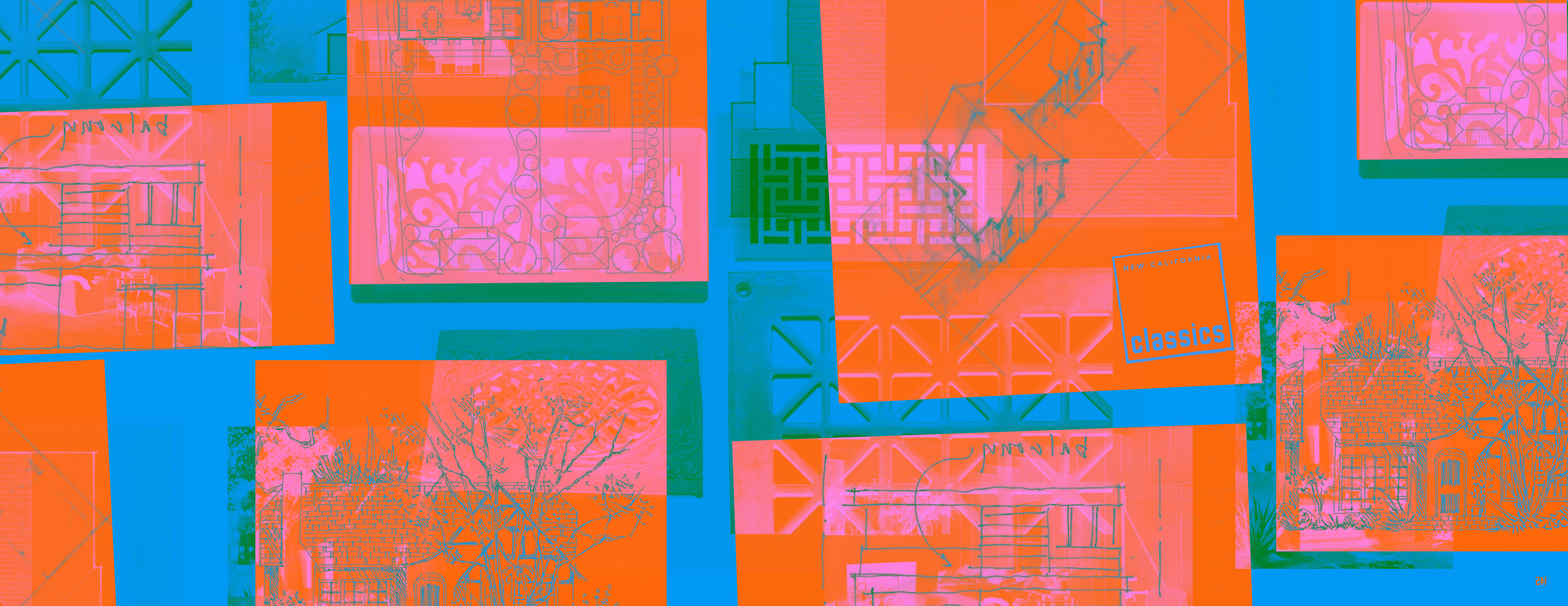


PLANTS

*Water Lilly*  
*Penstemon Strictus*  
*Santa Barbara Daisy*  
*Iris Germanica*  
*Yarrow Millefolium*  
*Lavandula x Intermedia*

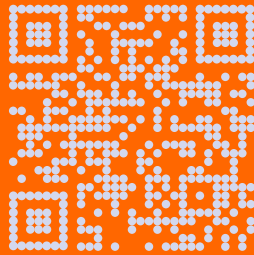






NEW CALIFORNIA  
classics





TO LEARN MORE VISIT US AT  
[NEWCALIFORNIAClassics.com](http://NEWCALIFORNIAClassics.com)