



STORYBOOK

ARCHITECTS & DESIGNERS	2025
GEDDES ULINSKAS CARLOS A FLORES MICHELE TROUT RACHEL SIEGEL	

HISTORY

ORIGINS

Gaining popularity in California in the 1920s, Storybook Cottage style presented a more casual take on a highly romanticized medieval European cottage presented in films and fairy tales. Its whimsical, nostalgic look gained popularity in a postwar culture, as suburban expansion came to define American design. In California, specifically, the influence of set design pushed boundaries with playful details and irregular scale.

HISTORICAL EXAMPLES

Spadena House by Harry Oliver

Snow White Cottages by Ben Sherwood

Charlie Chaplin Studios by Meyer & Holler



KEY FEATURES

ROOFLINES

Steeply pitched, often with uneven or rolled eaves to mimic thatched roofs.

DOORS

Arched or irregularly shaped, constructed from heavy wood with iron hardware.

WALLS

Stucco or stone finishes, occasionally featuring half-timbering reminiscent of Tudor styles.



STEEP SLOPES

Typically a 12/12 pitch or higher, contributing to the dramatic silhouette.

CURVED OR ROLLED EAVES

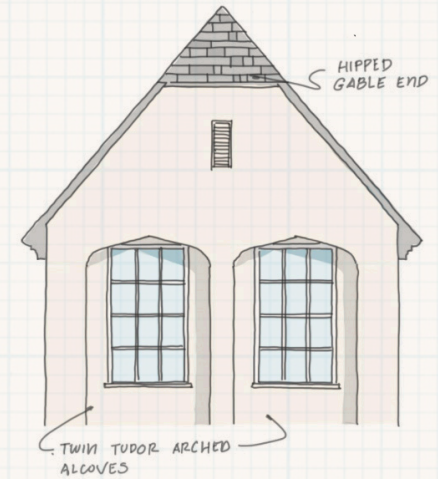
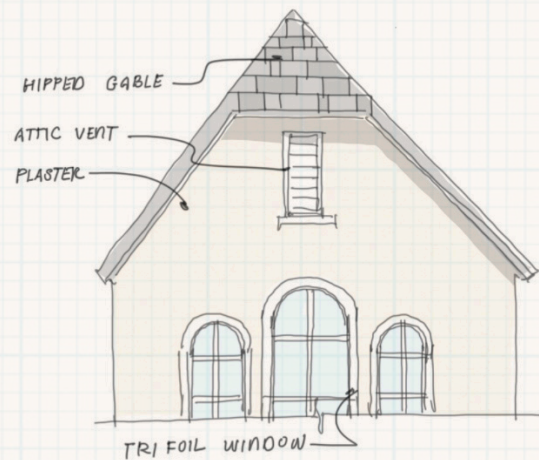
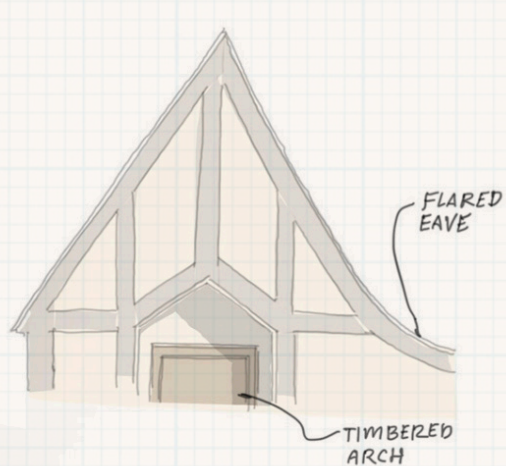
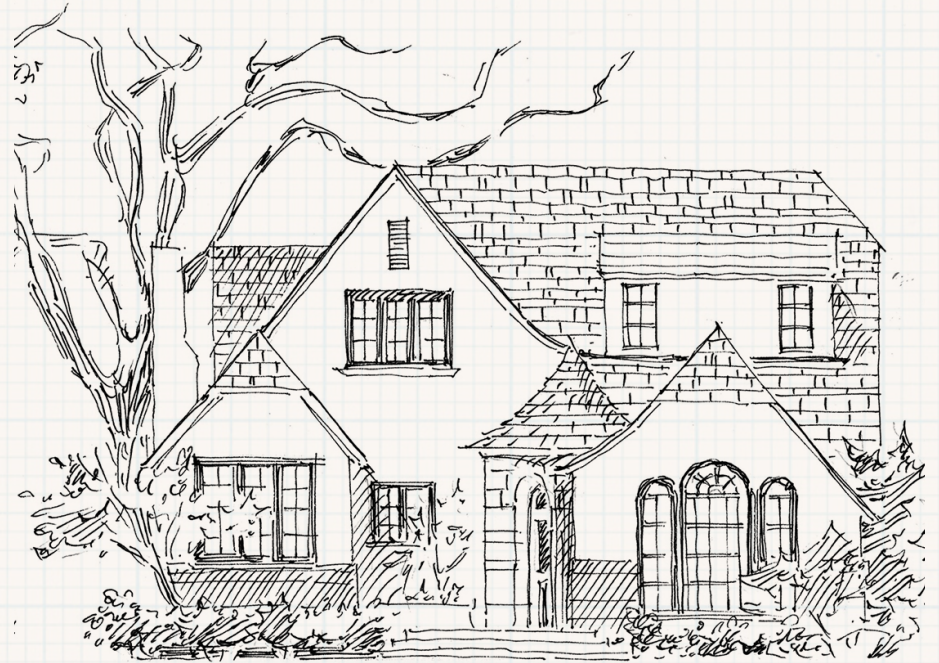
Mimicking the appearance of thatched roofs.

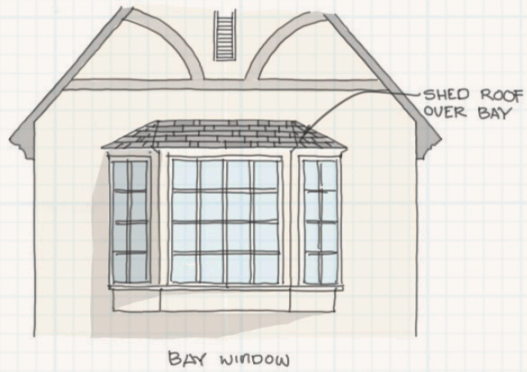
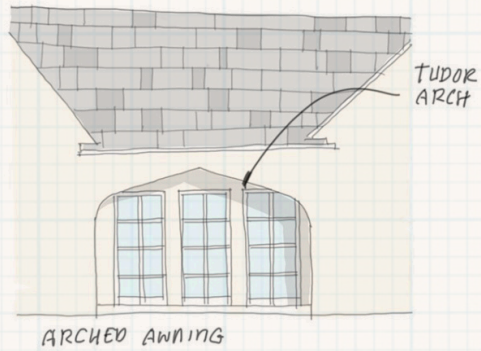
CHIMNEYS

Steeply pitched, often with uneven or rolled eaves to mimic thatched roofs.

ASYMMETRICAL DESIGNS

Including catslide roofs that extend close to the ground.





WINDOWS

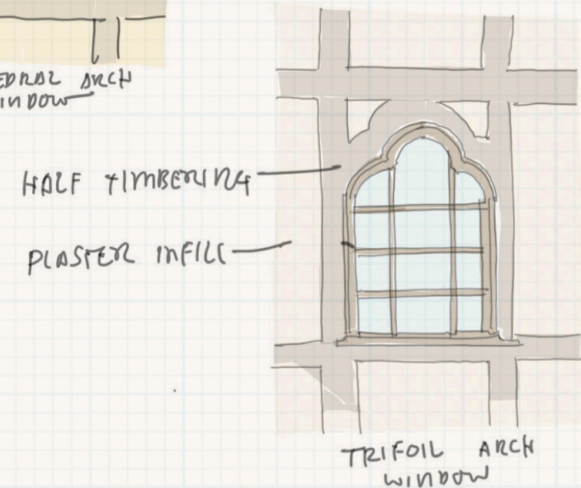
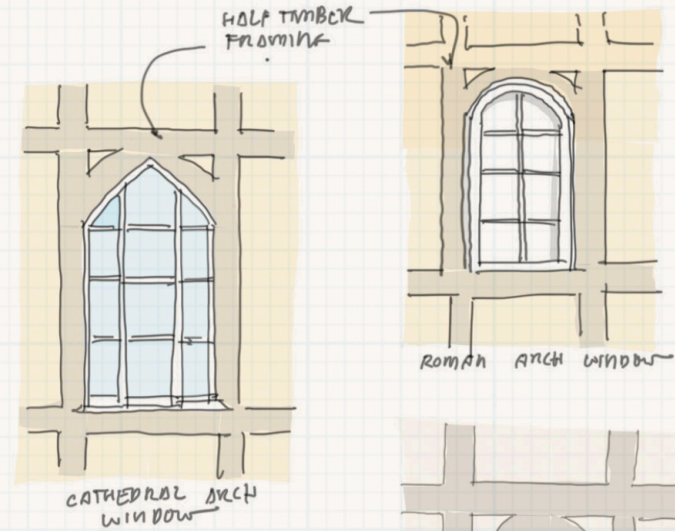
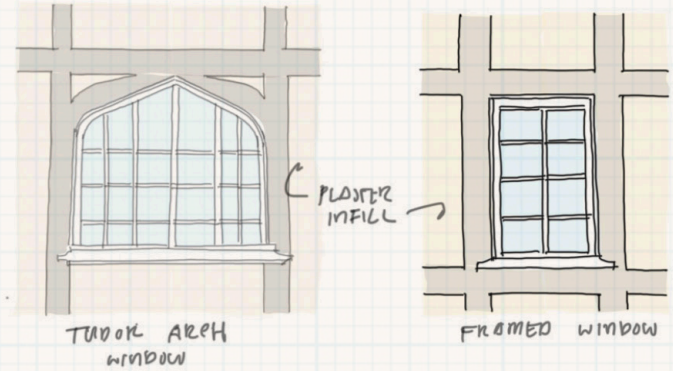
Leaded glass panes, arched or eyebrow-shaped, often asymmetrically placed.

DECORATIVE SHINGLES

Often with wave patterns or varied textures.

MATERIALS

Natural stone, wood, and stucco, often combined to enhance the handcrafted appearance.



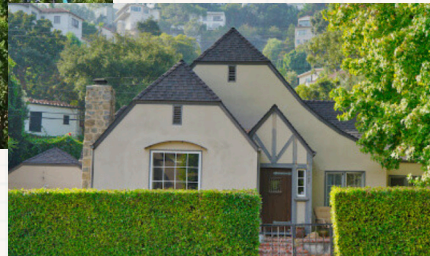
INSPIRATION



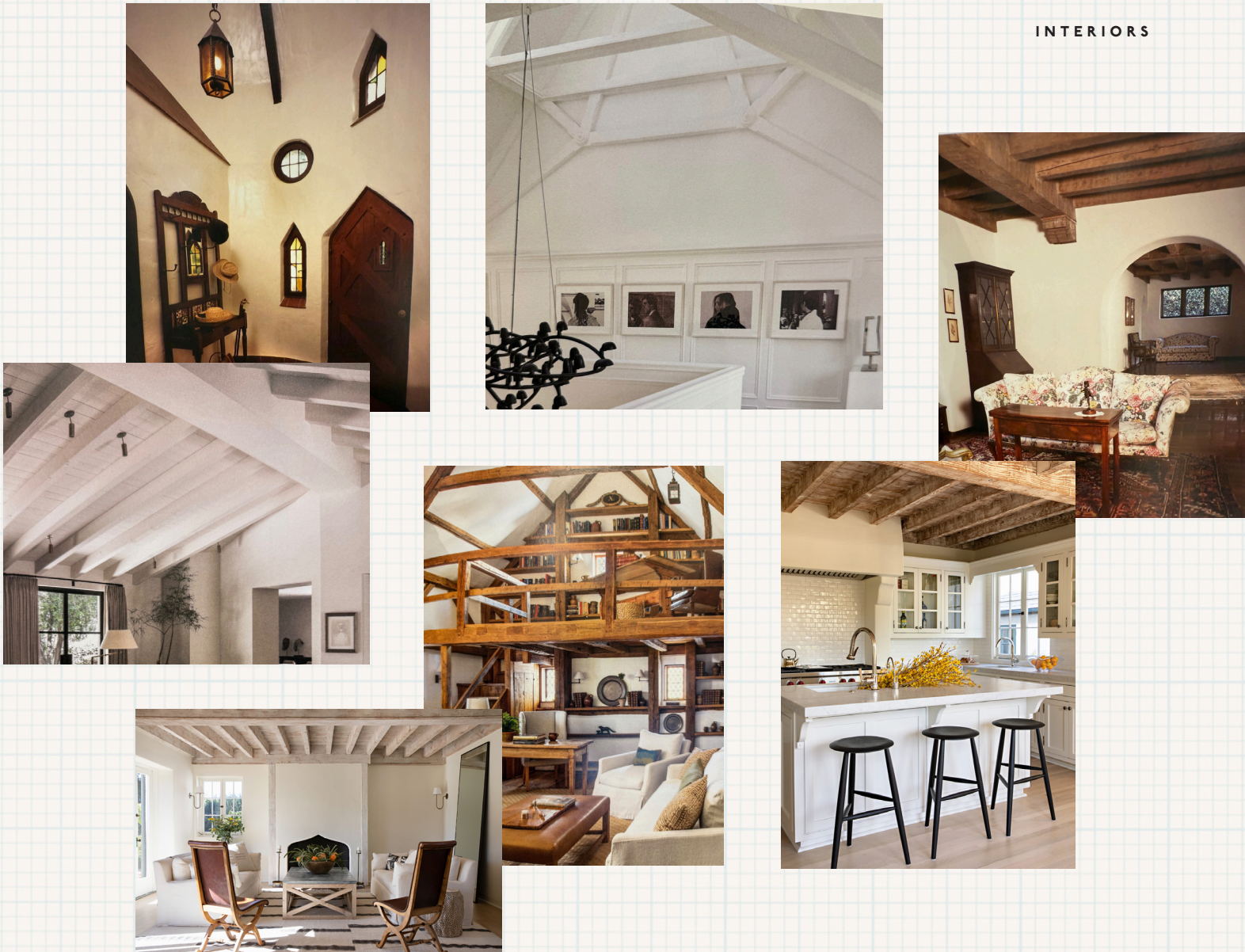
& PRECEDENT



EXTERIOR FACADE

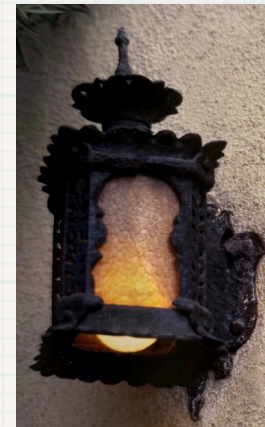


INTERIORS





INTERIOR DETAILS
& FIXTURES

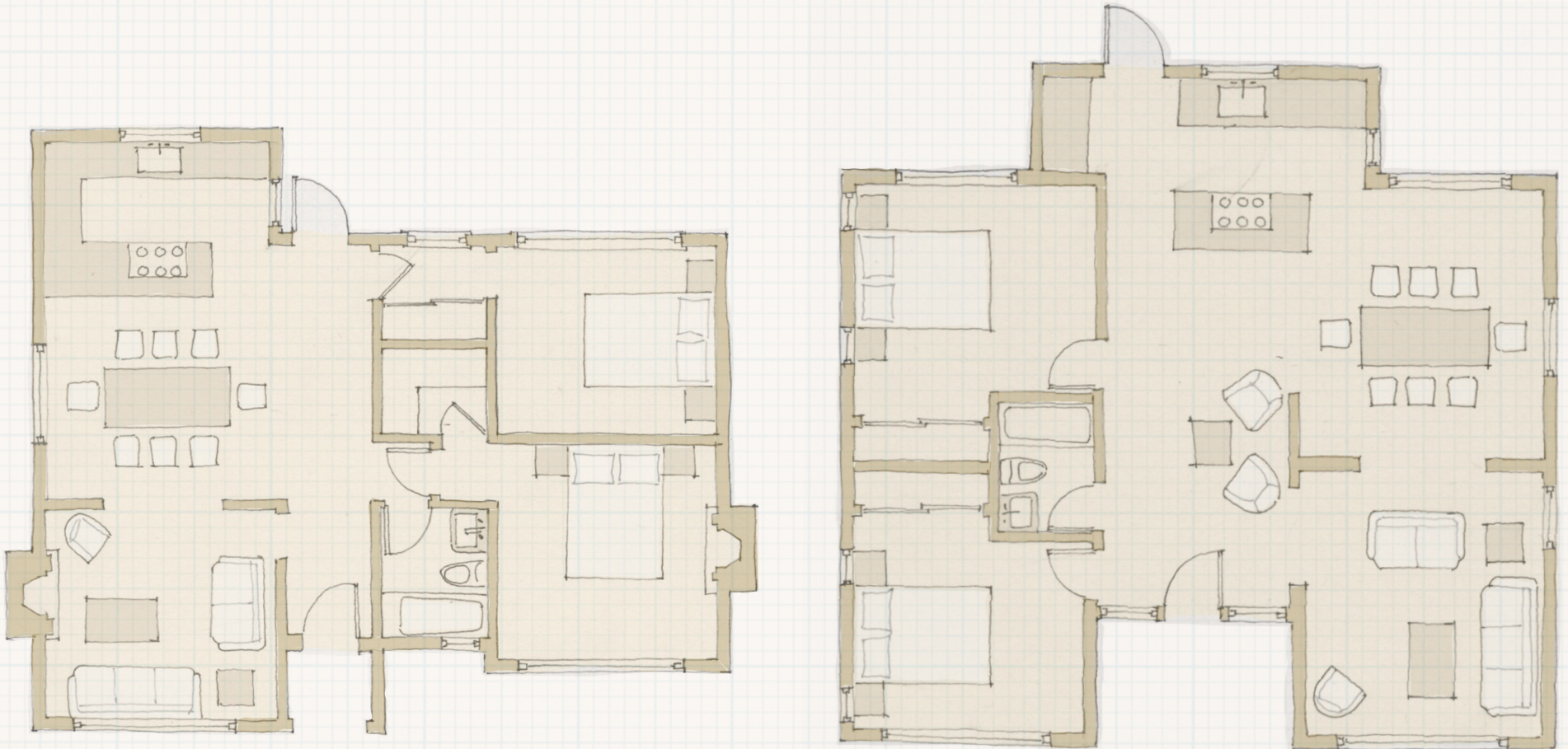


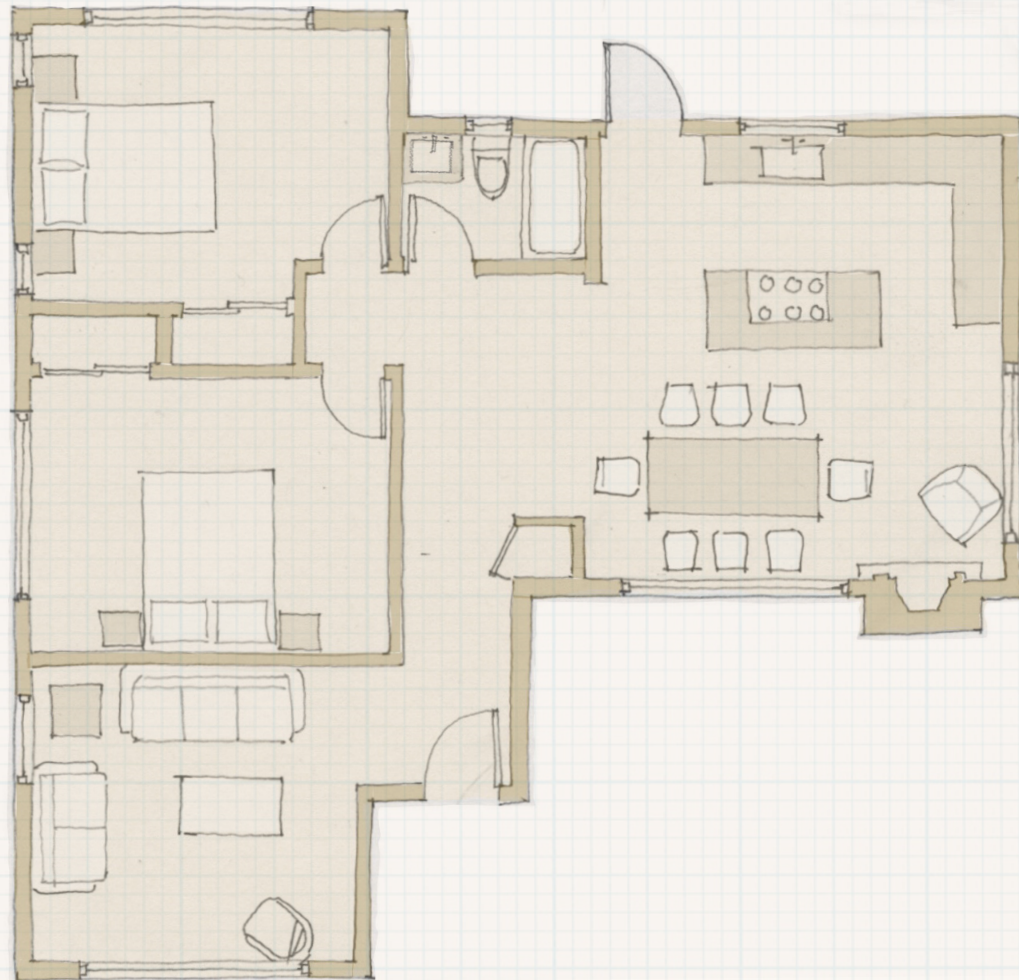
DESIGN



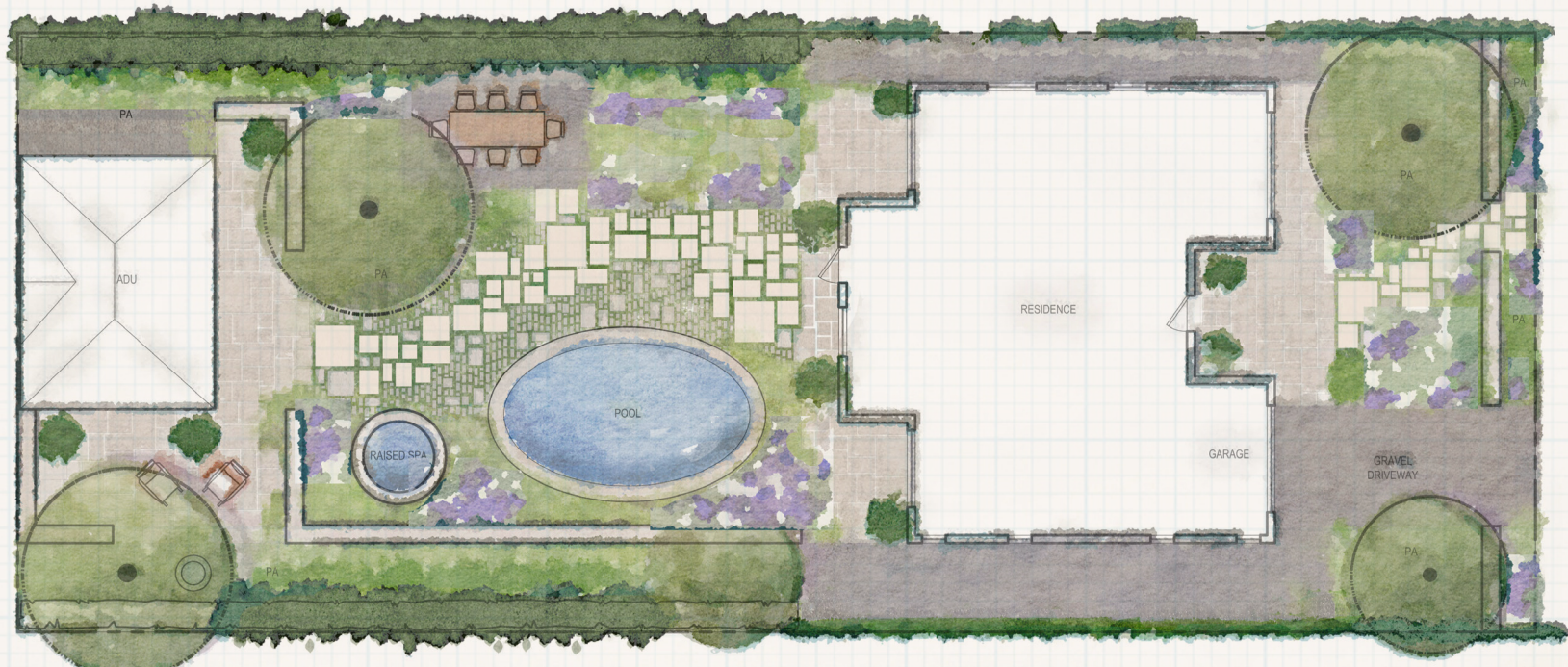
CONCEPTS







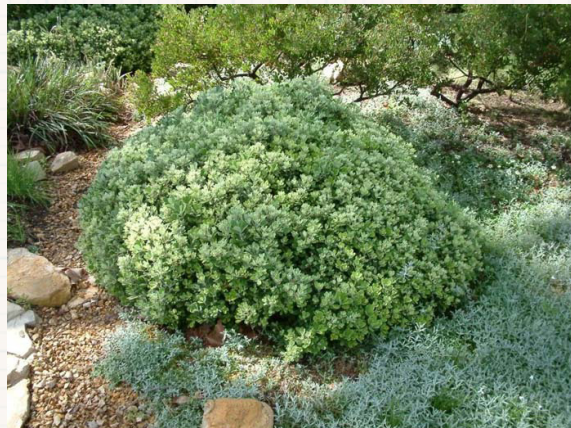
LANDSCAPE



CONCEPTS

HARDSCAPE &
GARDEN ELEMENTS





TREES & SHRUBS

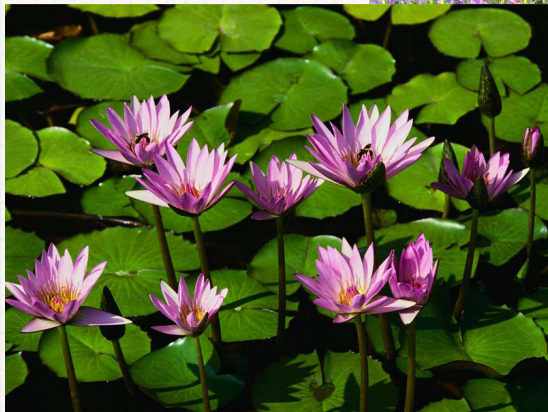
Ginkgo Biloba

River Birch

Pittosporum Tobira Wheeler's Dwarf

Boxwood





PLANTS

Water Lilly
Penstemon Strictus
Santa Barbara Daisy
Iris Germanica
Yarrow Millefolium
Lavandula x Intermedia

